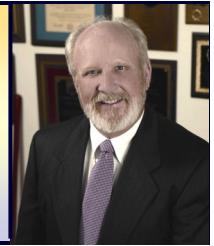




Northeast Newsletter



Tarrant County - Precinct 3
"Working together for a better tomorrow"



June 2014

Volume 7, Issue 3

Coffee with the Commissioner

Friday, June 13th
7:30 a.m. to 9:00 a.m.



Start your day with us!

SOUTHLAKE TOWN HALL

1400 Main Street, #410
Southlake, TX 76092



COMMISSIONER'S CORNER

We are headed into a busy summer with the new Northeast Courthouse going up, later this summer, Tarrant County will go live with a new user-friendly county website, and Empowering Seniors 2014 is in full swing with sponsors and exhibitors being secured. We are busy working toward another very exciting, successful event that will take place on October 3rd!

Our Spring wrapped-up with the Life Gift Second Chance Run that was held in May. This was the seventh year for Team Fickes to participate in the run which brings awareness to organ donation. It was a nice, cool morning in the Fort Worth Stockyards for our team of 78 participants who came out to show their support for the cause. I am always thankful for my team of colleagues, friends, and family who register for this event since organ donation is near and dear to me since my liver transplant in 2008.

The past month was also filled with retirements of several city colleagues that I have had great partnerships with over the years. Mayor Mary Lib Saleh and Mayor Pro-Tem Leon Hogg retired from their leadership positions with the City of Euless, and Councilmember Roy Stewart retired from the City of Grapevine. I wish them well in their retirement and will miss working with them, but look forward to partnering with the new leadership that will fill their shoes!

Moving forward, we need to be prepared for the extreme heat, be aware of precautions for West Nile Virus, and how to deal with the potential for bad weather. Find out more tips in the senior news section "Beat the Heat" article. Our public health department does an excellent service by providing information on precautions for West Nile Virus:

tcweb.tarrantcounty.com. Know what to do and what the resources are for emergency planning and management in North Texas for bad weather. Check out the website: www.knowwhat2do.com.

Courthouse construction is happening in NE Tarrant County. As a resource for the citizens to handle county business from getting your auto registration, passport, marriage license, or a transaction with the JP Court or Constable's office, the county strives for a customer-friendly environment with up-to-date technology to serve the citizens in a smooth and quick manner. The new Northeast Courthouse, with expanded office space and services, is projected to open at the end of this year. Along with your new Northeast Courthouse, many renovations have taken place at the historic Tarrant County Courthouse in downtown Fort Worth. Check out the updates to both office buildings inside the newsletter, and I encourage you to visit and tour both upon completion of construction.

May was Tarrant County Employee Appreciation month. We celebrate every year with a kickoff celebration downtown, and then in Precinct 3 with our teams at Southlake, the temporary location in Bedford, and our road crew team at the Maintenance Center. Our county employees serve the citizens under all circumstances, and I cannot thank them enough for their outstanding work! I believe we have the best employees in Northeast Tarrant County and hope the public agrees.

Plan to join us this Friday morning for **Coffee with the Commissioner at our Southlake office from 7:30 to 9:00 a.m.**

As Father's Day is next weekend... I wish all of the fathers a great day enjoying the time with family and friends.

Gary Fickes

SAVE THE DATE!

- Empowering Seniors Oct 3
- United Way Fundraiser Oct 31



Like us on
Facebook

Inside this issue:

Community Leader Spotlight - Mary Louise Garcia	2
Tarrant County Ex-Offender Reentry Program	2
Northeast Courthouse Update	3
LifeGift Second Chance Run Follow-up	4
Empowering Seniors 2014- Save the Date	4
Economic Development - Grapevine Mills Mall Update	5
Mental Health Connection of Tarrant County	5
An Historic Moment In Time - 1895 Tarrant County Courthouse West Lawn and Entry Restoration	6
City of Euless - Parks	6
Employee Appreciation Days	7
Senior News	8
Transportation Updates on Northeast Tarrant County Road Projects	9
Calendar of Events	10
Contact Information	10

Question of the Month

Question: With the HOT days of Summer coming, do you know what the hottest recorded temperature is in Texas and where/when?



Answer on page 3

Passport Day in the USA

Saturday, June 14th · 10 a.m.-3:00 p.m.

- Southlake Sub-Courthouse: 1400 Main St., Suite 340, Southlake TX 76092, 817-481-8190
- Arlington Sub-Courthouse: 700 E. Abram St., Suite 204, Arlington TX 76010, 817-548-3963
- Southwest Sub-Courthouse: 6551 Granbury Rd., Fort Worth TX 76133, 817-370-4570
- Northwest Sub-Courthouse: 6713 Telephone Rd., Lake Worth TX 76135, 817-238-4457
- Mansfield Sub-Courthouse: 1100 E. Broad St., Suite 102 Mansfield, TX 76063, 817-473-5113

www.tarrantcounty.com



Community Leader Spotlight



Mary Louise Garcia



Tarrant County Clerk

Tarrant County Clerk Mary Louise Garcia always knew her path would lead to public service. Born into an Air Force family, Mary Louise attended Fort Worth public schools, graduating from Fort Worth's Arlington Heights High School. She graduated with honors from the University of Texas at Arlington with a Bachelor's Degree in Criminology and Criminal Justice.

Before being elected to her position in 2010, Mary Louise served eight years on Sheriff Dee Anderson's command staff as the Administrative Specialist working with the civilian clerks among the 1200 employees and prior to public service, owned her

own PR small business serving nonprofits, political and business clients. In her first term as County Clerk, Mary Louise was honored with the prestigious Texas Association of Counties Best Practices Award for a new Intranet website that links over 141 County Clerk employees in nine offices and 15 courts for a better customer experience. Her initiatives to improve customer service also included expanding business hours and opening a new neighborhood office at the Miller Sub-Courthouse. All of this was accomplished without adding new personnel. Mary Louise was re-elected to a second term running unopposed in the 2014 March Primary.

Long active in community service groups and church organizations, Mary Louise serves on the boards of the National Property Records Industry Association (PRIA), the Tarrant County Bail Bond Board, the Tarrant County Elections Commission, the Downtown Fort Worth Rotary and the State Bar of Texas District 7 Grievance Committee. She is the chairperson of the Tarrant County Business Continuity and Disaster Recovery Committee, and most recently she was appointed by Governor Rick Perry to the Texas County and District Retirement System Board of Trustees which governs retirement, disability and survivor benefits

for more than 248,000 Texans.

Mary Louise is especially proud of her role as wife and mom. She and her husband, Fort Worth native Chris Garcia, have two daughters. Juliana graduated from Cornell University in New York this past May and Gabriella is a junior at Texas State University in San Marcos.

Her free time is dedicated to those she loves the most -her family and friends. She enjoys reading and stays active by doing yoga and running with her dog Riley Roo.

On a more personal note -

What do you do for fun? *Yoga, running, and reading.*

Favorite Restaurant? *Bombay Grill*

Favorite Movie? *Don't really have a favorite, but I do love a good comedy.*

Favorite vacation spot? *Colorado*

Last book read? *"Bridge of Sighs" by Richard Russo*

People would be surprised to know... *that in my youth, I grew up studying and playing classical music on the piano. I still play for myself only. It is a great way for me to escape and relax.*

Tarrant County Ex-Offender Reentry Program (TCRI)

Texas Counties sent over 45,000 offenders to Texas State Jails or Prisons with felony convictions last year and over 98% of those will get out one day. Around 7,000 are coming home to Tarrant County this year. So, what ways can our county help with their return for the betterment of the ex-offenders and our citizens? We have a lot of options, but the one that is working the best is to plan for their return home. That effort nationally is called Reentry. The definition of reentry is the coordination of efforts inside the jail or prison that is continued upon release, with the goal being sustainable employment and housing.

Locally, the members of the newly formed Tarrant County Reentry Coalition (TCRC) are hard at work to reduce crime and recidivism by facing this issue with thoughtful effort and determination. Through a coordinated system of resource delivery, Tarrant County is quickly becoming a recognized "best practice" for Reentry.

Tarrant County understands that prisoner reentry is a crucial criminal justice and community safety issue and continues to support organizations in their efforts to

coordinate community-based resources that will assist ex-offenders to transition back into the community successfully with negative impact to the citizens

In 2005, Commissioner Roy Charles Brooks spearheaded the Tarrant County Ex-Offender Reentry Program (TCRI). The Tarrant County Commissioners Court approved the development of the Tarrant County Reentry Council, the Reentry Council Charter, and the Reentry Council's position paper.

Tarrant County partnered with Cornerstone Assistance Network to:

- Evaluate and update existing and additional qualified reentry resources available to previously incarcerated persons within the Tarrant County area.
- Develop and maintain a comprehensive twenty-four (24) hour a day, seven (7) days a week internet-based reentry resource network.
- Develop an on-line Reentry Quick Reference Guide that will provide a current listing of reentry specific services and resources related to ex-offenders throughout the Tarrant County area.
- Provide outreach by informing and distributing information related to the

aforementioned reentry resource network and quick reference guide to organizations such as municipal jails, county jails, state jails, prisons, law enforcement agencies, as well as local cities, neighboring counties, and the faith based community.

Mike Doyle, President and CEO of Cornerstone Assistance Network, currently serves as the Chair of the TCRC. Mr. Doyle says, "with technology as advanced as it is, and since we know who and approximately when those in our jails or prisons are being released or paroled, we might as well be ready and have a plan in place when they get home. Getting someone into employment and housing quickly is a key factor in reducing recidivism. Currently, in Texas, almost 50% of those reentering our communities will go back to jail or prison. A contributing factor to that is employment and housing. TCRC is working hard to reduce recidivism in Tarrant County. The Coalition website is <http://www.tcreentry.org> for more information and meeting dates and times.





Northeast Tarrant County

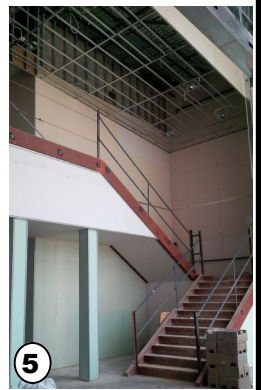
"Working together for a better tomorrow"



Northeast Sub-Courthouse

NEW Northeast Courthouse Construction Update

- With the masonry complete and scaffolding pulled away the main entry reveals the beautiful granite, stone veneer, and curtainwall glass. #1
- The old asphalt paving is being removed in preparation for the earthwork excavation. Phase one paving will begin behind the Northeast Courthouse and work its way around to the front.
- The sun shades have now been installed on the west side and the round precast concrete column covers are being set outside the Tarrant County Credit Union.
- The Maintenance Building is having insulation blown in the walls and the outside is sporting a new brick veneer and green roofing to match the adjacent Alliance for Children Building. #2
- Inspection of the Judge's Bench drywall where bullet resistant fiberglass will be installed for the protection of the Judge. #3
- Drywall continues with the texturing process and painting has begun on both floors. #4 & #5
- Ceiling grid installation has begun and elevator installation is scheduled for mid-June.
- Substantial completion remains scheduled for December 2014.



Northeast Courthouse Temporary Locations:

http://www.tarrantcounty.com/e commissioner/lib/e commissioner/Temporary_Locations.pdf

Question of the Month

Question: With the HOT days of Summer coming, do you know what the hottest recorded temperature is in Texas and where/when?

Answer: The thermometer in Monahans reached 120 degrees in the shade on June 28, 1994, tying the record set by Seymour on August 12, 1936



LifeGift Second Chance Run Thank you Team Fickes!

Team Fickes was well-represented at this year's LifeGift Second Chance Run on Saturday, May 17th. We had a great crowd and there were purple T-shirts everywhere!

Thank you for helping us bring awareness to this vital need for organ donation. Send your email address to: ddwenske@tarrantcounty.com so we can keep you posted for next years' event!



Team Fickes was sponsored by the Tarrant County Credit Union. www.tarrantcu.org



Informative Workshops!

Over 120 Fantastic Exhibitors!

Professional Health Screenings!

Fabulous Entertainment & Door Prizes!

Over 1,600 Attendees!

6th Annual EMPOWERING Seniors AGES 50 PLUS



Tarrant County Commissioner Gary Fickes

FBCE Campus West, 205 N. Industrial, Bedford Texas 76021

Friday, October 3, 2014 • 8:30 a.m. to 2:00 p.m.

SPONSORSHIPS STILL AVAILABLE!

- ~~SOLD~~ \$5,000 Presenting Sponsorship
- ~~SOLD~~ \$3,500 Platinum Sponsorship
- Gold Sponsorships (Please select one)
 - ~~SOLD~~ \$2,000 Entertainment
 - ~~SOLD~~ \$2,000 Bingo Room
 - ~~SOLD~~ \$2,000 Coffee/Water Station (1)
 - ~~SOLD~~ \$2,000 Shuttle (1)
 - ~~SOLD~~ \$1,000 Silver Sponsorship
 - ~~SOLD~~ \$500 Bronze Sponsorship

For information visit our website: www.empoweringseniors.com or contact Carolyn Sims: cssims@tarrantcounty.com 817-581-3600

EXHIBITOR BOOTH

\$250.00

Early Bird Special!

**Register and pay by
June 16th and save \$50.00!**

(Space is limited and subject to availability)

For information visit our website www.empoweringseniors.com or contact Rebecca Barksdale: rbarksdale@tarrantcounty.com 817-481-8234 (If you are a non-profit interested in booth space, contact Rebecca for assistance.)

Hurry...
space is
limited!

ECONOMIC DEVELOPMENT

Grapevine Mills Mall Update



Before:



After:

Big changes are underway at Grapevine Mills Mall. In 2013, the Simon Corporation began planning a \$40 million renovation to Grapevine Mills Mall. This renovation is now scheduled to begin this Fall and will be completed within 12 months.

Grapevine Mills Mall, constructed in 1997, focuses on a mix of both entertainment and retail attractions. The original Texas-based interior themes served their purpose at that time but will now be replaced with a more timeless, upscale, classic, open and highly lighted design. Omniplan Architects, the designer for North Park Mall in Dallas was enlisted to

design the new interior and this upscale look is apparent in their renderings.

To match this new interior design, the tenant mix has also been upgraded to more of a powerful fashion and family based mix with the addition of Michael Kors, Crocs, Janie and Jack, PUMA, Justice & Brothers, Windsor and Bachrach. Major store remodels and strategic relocations were completed by Saks Fifth Avenue/Off 5th, Coach Factory, Osh Kosh B'Gosh, Nike, Famous Footwear, Chili's Too, Foot Locker, Body Central, Zales, Hot Topic, Papaya Clothing, Haggar Clothing, Gamestop and Master Cuts. Other labels

coming soon include Express, Adidas, Buckle, Luggage Factory, Francesca's Collections and O'Neill.

The entertainment venues of Legoland and Sealife Aquarium have been powerful successes along with the Fork and Screen and Cinema Suites concepts at AMC 30 that allow dining in comfortable recliners while patrons take in a movie. Magic Maze's Emporium was added in 2013 and consists of a journey through a maze of mirrors, labyrinths and laser images. This family venue has been a popular success. Other destination family entertainment venues are currently being planned to add to this component of Grapevine Mills Mall.

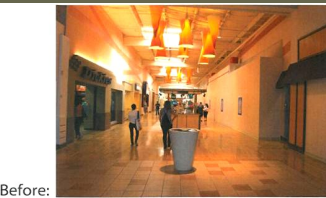
In summary, if you haven't been to Grapevine Mills Mall lately, it is time to return to enjoy the new and improved mix of family shopping and entertainment venues.

www.simon.com/mall/grapevine-mills

For more information, please call Dan Truex, Economic Development Manager



Article courtesy of Dan Truex



Before:



After:



Before:



After:



After a mass shooting by a man with mental illness at Wedgwood Baptist Church in 1999, Fort Worth Mayor Kenneth Barr approached a group of mental health providers asking them to identify gaps in the system and to develop strategies to close those gaps. That request galvanized a collaboration of mental health care providers, individuals needing mental health care, community leaders and others interested in transforming the system into Mental Health Connection of Tarrant County. Many improvements in the mental health system have resulted.

Today, Mental Health Connection (MHC) has 31 public and private member agencies that provide annual financial support. Numerous other agencies and individuals provide the volunteer workforce that accomplishes the collaborative goals determined by the group. The

collaboration is now working on its fourth strategic plan, guided by its vision statement, "Healthy Minds, Healthy Communities." Communities across the country have turned to MHC for guidance in establishing their own collaborations.



Recognize Trauma
Change a child's future.

www.recognizetrauma.org



MHC is currently involved in several initiatives, including efforts to create a trauma-informed community, fight stigma, build resilience in youth, and improve community capacity to address the unique mental health needs of refugees resettled in Tarrant County. MHC has sponsored training in evidence-based practices to enhance the skills of our mental health workforce and to help people of all ages

with mental health issues achieve better outcomes. Through its work, Mental Health Connection has leveraged funding of more than \$60 million to improve the mental health care system.

Anyone interested in improving the mental health care system in Tarrant County is invited to attend the monthly MHC meetings or become involved in the multiple Mental Health Connection initiatives. The monthly membership meetings are held on the second Monday of each month at 8:30 a.m. at The Women's Center, 1723 Hemphill in Fort Worth.

Typically, an average of 70 individuals representing an array of perspectives attend. These meetings provide a great opportunity to learn more about mental health and related topics, to share information, and to network.

Learn more at:

www.mentalhealthconnection.org

Article courtesy of Kay Barkin

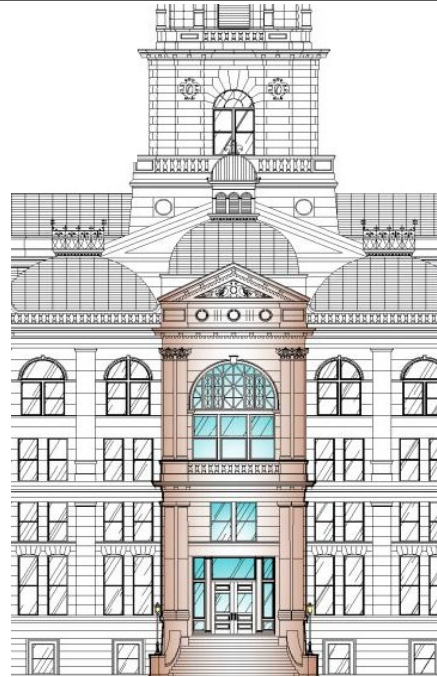
AN HISTORICAL MOMENT IN TIME
1895 Tarrant County Courthouse West Lawn and Entry Restoration

Replacing the west face of the Courthouse has been a complex and multi-faceted project. Starting in 2006, we first had to research what was there, why it was there and how it had been modified (and relocated) over the years.

We quickly found we couldn't just demolish the old Civil Courts Building, put the west entry back, landscape the grounds and go home. The Courthouse was no longer a complete, self-contained building - if we simply demolished the Civil Courts Building, the Courthouse would be in worse shape than in 1895.

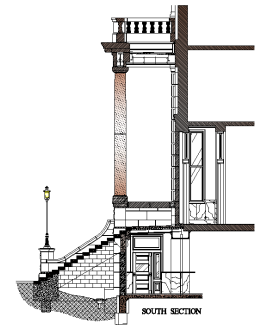
As we delved further into the scope, we made the decision with Tarrant County to divide the project into five primary phases. Later these became further divided into additional sub-phases. This allowed work to fit varying Tarrant County budgets over the last eight years. When the Great Recession hit in 2008, work was held back for a while until funds became available.

Delivered as a series of specialized contracts, we were able to have work provided



by specialist providers. These could bid against similar contractors for narrow scopes of work. For example, relocation of the chiller and condenser systems was a separate project with only mechanical contractors bidding.

ground from the west building to east alongside the Belknap Street right-of-way, then went south under the east Courthouse lawn, then tunneled under Weatherford Street, finally buried under the lawn to the basement of the Administration Building.



Recent challenges have included all the mysteries of construction from 1895 and later. When excavating for new, more stable foundations for the south main entry plaza, we discovered 1895 gas pipe, broken clay tile drain pipe, 6 inch conduit with coax cables buried in concrete, perforated drain pipe, a rough 1895 limestone block foundation wall, and an active 6 inch cast iron sanitary sewer drain - which was not supposed to be there.

A major early challenge was hitting the shallow tunnel under Belknap that connected the Courthouse with the long-departed jail in what is now Paddock Park. It was a major obstacle to Phase 2 pipe and conduit installation. That tunnel, still not properly plugged, will finally be dealt with in the last phase of the project.

Article courtesy of Arthur Weinman



Our Parks are...

One of the most important aspects of quality of life is the availability of high-quality parks and recreational opportunities in the city. The benefits of parks and recreation influence every aspect of our lives. These benefits allow our citizens to experience new activities, live healthier lifestyles, socialize and interact with others and, most importantly, to strengthen our sense of pride in our community.

An entire park containing historical artifacts, Heritage Park also features the first brick house in Euleus, a log house dating from the 1850's, and the McCormick barn made of lumber from Camp Bowie after WWI.

Also featured at Heritage Park is the Euleus Heritage Museum located inside the Ruth Millican Center at 201 Cullum Drive. The museum provides a place for guests to view hundreds of collected and documented historical artifacts. Some of these artifacts date back to the 1880s. The museum features a military room, a 1930s kitchen, a 1940s school room, a replica of the first post office in Euleus, many interesting tools, photos, and all types of other historical items from days gone by.

The museum, along with Heritage Park, is available for public tours on the second Saturday of every month from 1:00 to 5:00 p.m.

For more information on the Euleus Heritage Museum at the Ruth Millican Center and to arrange tours of Heritage Park, please call 817-685-1649.

Article courtesy of Ray McDonald



The Fuller House



Himes Log House



McCormick Barn

- 1. Blessing Branch Park
2. Bob Eden Park
3. Dog Park
4. Heritage Park
5. J.A. Carr Park
6. Kiddie Carr Park
7. Midway Park
8. Preserve At McCormick Park
9. Reflection Park
10. South Euleus Park
11. Trailwood Park
12. Villages at Bear Creek
13. West Park
14. Wilshire Park



Employee Appreciation Days!

Every May, Tarrant County honors their employees with celebration luncheons to show their appreciation.

To all of our employees, thank you for your dedication and service to the citizens of Tarrant County!

All Employee Appreciation Day luncheons were provided by the Tarrant County Credit Union. Thank you TCCU for your support and sponsorship!



Southlake Town Hall



**Tarrant County
Credit Union**

www.tarrantcu.org



Precinct 3 Maintenance Center



Northeast Courthouse - Bedford

Thank you for your dedicated service!



A retirement celebration was held on May 1st for Grapevine City Council Member Roy Stewart honoring him for his 18 years of dedicated service to the City of Grapevine!



Serving on the Euless City Council since 1996 and currently serving as Mayor Pro Tem, Leon Hogg was honored at a farewell picnic on May 2nd for his 18 years of dedicated service to the City of Euless.



A farewell reception was held on May 16th for Mayor Mary Lib Saleh honoring her for 25 years of public service to the City of Euless.

Mayor Saleh was elected the first female Mayor of Euless in 1993 after serving two years as a council member and two years as Mayor Pro Tem.



Beat the Heat this Summer!

- Stay in air-conditioned buildings as much as possible. Contact your local health department or locate an air-conditioned shelter in your area.
- Do not rely on a fan as your primary cooling device during an extreme heat event.
- Drink more water than usual and **don't wait** until you're thirsty to drink.
- Limit your use of the stove or oven to cook—it will make you and your house hotter.
- Wear loose, lightweight, light-colored clothing.
- Take cool showers or baths to cool down.
- Check on a friend or neighbor and have someone do the same for you.
- If you are outside, wear sunscreen and bug repellent.
- Understand how sun exposure and/or very hot weather can affect certain medications.
- Check the local news for health and safety updates.
- Know the warning signs of heat exhaustion.



Seek medical care immediately if you have, or someone you know has, symptoms of heat-related illness like muscle cramps, headaches, nausea or vomiting.

Heat Exhaustion

- Heavy sweating
- Weakness
- Cold, pale, and clammy skin
- Fast, weak pulse
- Nausea or vomiting
- Fainting



What You Should Do:

- Move to a cooler location.
- Lie down and loosen your clothing.
- Apply cool, wet cloths to as much of your body as possible.
- Sip water.
- If you have vomited and it continues, seek medical attention immediately.

Heat Stroke

- High body temperature (above 103°F)*
- Hot, red, dry or moist skin
- Rapid and strong pulse
- Possible unconsciousness



What You Should Do:

- Call 911 immediately — **this is a medical emergency.**
- Move the person to a cooler environment.
- Reduce the person's body temperature with cool cloths or even a bath.
- Do **NOT** give fluids.

People aged 65 years or older are less likely to sense and respond to changes in temperature.

Health & Lifestyle EXPO

EMPOWERING Seniors

Tarrant County Commissioner Gary Fickes

FBCE Campus West
205 N. Industrial, Bedford Texas 76021

6th Annual
100% FREE
ADMISSION

Join us for a fun-filled Day!

Over 1,600 Attendees
Caregivers, Boomers & Seniors

SAVE THE DATE!
October 3, 2014
8:30 a.m.-2:00 p.m.

www.EmpoweringSeniors.com

<u>Northeast Tarrant County Senior Centers</u>		
Bedford Senior Center	(817) 952-2325	www.ci.bedford.tx.us
Colleyville Senior Center	(817) 503-1195	www.colleyville.com
Eules Family Life Sr. Ctr.	(817) 685-1670	www.eulesstx.gov
Grapevine Sr. Activities Ctr.	(817) 410-8130	www.grapevinetexas.gov
Haltom City Sr. Citizens Ctr.	(817) 834-8021	www.haltomcitytx.com
Hurst Sr. Citizens Activities Ctr.	(817) 788-7710	www.ci.hurst.tx.us
Keller Senior Activities Ctr.	(817) 431-8727	www.cityofkeller.com
NRH Senior Center	(817) 427-6620	www.nrhtx.com
Southlake Senior Activity Ctr.	(817) 748-8398	www.ci.southlake.tx.us
Watauga Senior Center	(817) 514-5892	www.ci.watauga.tx.us



Transportation

Northeast Tarrant County

DFW Connector Project

Hotline: 877-411-4212

www.dfwconnector.com



Sign up for e-alerts!

- In May, we moved northbound FM 2499 traffic onto the new frontage road. The new traffic pattern allows crews to begin grading (dirt), wall and bridge work between north and southbound FM 2499. The pattern will be in place for approximately one year (through May 2015).
- We are continuing to relocate gas, electric and telecommunication utilities along the north and southbound FM 2499 frontage road and FM 2499 mainlanes.

• Structures crews have begun reconstruction of the FM 2499 bridge over Denton Creek and will soon begin constructing the new bridge at Stars and Stripes Way.



North Tarrant Express

Hotline: 888-683-2015

www.northtarrantexpress.com



Sign up for e-alerts!

- The NTE project is now 90% completed! Contractors are starting to place final pavement along the on- and off-ramps and frontage roads, so there are frequent, short-term closures as this activity takes place. In mid-June, there will be a major traffic shift from the existing main lanes along westbound I-820 to the new TEXpress lanes, while pavement is placed.

We encourage drivers to check the website for up-to-date information on closings and construction activity. Also, with spring weather in full swing, please stay safe and alert in the zone, particularly when the roads are wet.



I35-W

- The NTE project team officially kicked off construction on I-35W between downtown and I-820 with a formal groundbreaking on May 1. Construction activity has already begun in the way of geo-tech surveying, right of way acquisition and utility relocation. The project is set to be completed in 2018.

(Pictured from left: Fort Worth Councilmember Sal Espino, Tarrant County Commissioner JD Johnson, Tarrant County Commissioner Gary Fickes, County Judge Glen Whitley, and Fort Worth Councilmember Dennis Shingleton.)



Highway 26

TxDot - N Tarrant Office

817-399-4300

www.txdot.gov

- Construction continues on the \$11.4 million SH 26 project from Brumlow Avenue/Pool Road to John McCain Road in Colleyville. Weather permitting, the installation of concrete pavement in the new northbound lanes will be finished by July, and motorists will be shifted to the new northbound lanes so that the southbound lanes can be reconstructed.

- Upcoming construction includes bridge and retaining wall work in addition to the southbound reconstruction. After the traffic switch Big Bear Creek bridge will be partially open to traffic.
- Two lanes of traffic will be maintained during peak driving times. Completion is estimated in 2015. The project is widening the road to three lanes in each direction with raised curb medians and left turn bays.



FM 1938 - Phase II

TxDot - N Tarrant Office

817-399-4300

www.txdot.gov

Southlake 817-748-8098

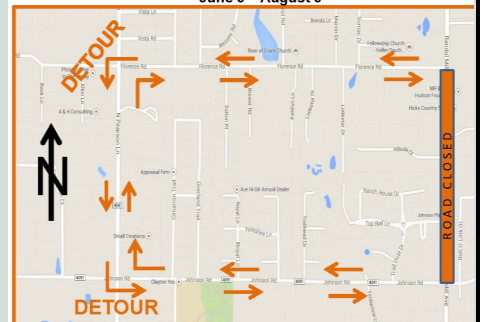
www.cityofsouthlake.com

- Beginning June 9, 2014, Randol Mill Avenue from Johnson Road to Florence Road will be closed to through traffic. This section of Randol Mill Avenue will be closed for about 60 days (weather permitting) as work crews construct water and sewer lines in preparation for TxDOT's widening of Randol Mill Avenue (FM 1938 Phase II).

• Closing the road is necessary due to the location of the existing water and sewer lines, which are currently under Randol Mill Avenue in the center of the two-lane roadway. An alternative to the closure was considered, but ultimately deemed too costly. Therefore, the road closure was determined to be the best solution.

- We ask for and appreciate your patience for the duration of the Randol Mill closure. If you're traveling in the area, please observe the detours once construction begins.

Randol Mill Road Closure
June 9 – August 9



CALENDAR OF EVENTS

- June FREE Outdoor Movies at Sundance Square..... www.sundancesquare.com
- Jun 9 23rd Annual Golf Tournament.....www.metroportmow.org
- Jun 13 Coffee with the Commissioner..... 817-581-3600
- Jun 14 Flag Day.....
- Jun 14 Blood Donor Day.....
- Jun 14 Healthy Hurst “Dash & Splash” Fun Run..... www.hursttx.gov
- Jun 14 Classic Keller Cocktail Dinner.....www.kellerbusinessconnections.com
- Jun 14 Passport Day in the USA.....www.tarrantcounty.com
- Jun 15 Fathers Day.....
- Jun 19 Annual Banquet- A Night at the Improv.....www.southlakechamber.com
- Jun 27 Celebrating Women in Business.....www.nwmetroportchamber.org
- Jun 27 Clean Air Action Day.....Do one thing to help improve AIR QUALITY
- Jul 17 The Empowered Woman.....www.business.colleyvillechamber.org
- Aug 2 Hispanic Wellness Fair.....www.hispanicwellnesscoalition.org
- Aug 6 Tarrant Co. Back to School Roundup.....www.backtoschoolroundup.org
- Aug 10 GCISD Connect-Back to School.....www.gcisd-kl2.org
- Aug 10 Back to School Event.....www.communitystorehouse.org
- Aug 16 & 23 HEB Operation Back 2 School.....www.6stones.org
- Aug 21 Senior Citizen Day.....
- Aug 25 First Day of School.....
- Aug 29-31 Bedford Blues and BBQ.....www.bedfordbluesfest.com
- Sep 1 Labor Day.....
- Sep 11 Grapefest.....www.grapevinetexasusa.com
- Sep 13 Annual Awards Gala.....www.heb.org
- Sep 18 North Texas Giving Day – United Way.....www.unitedwaytarrant.org
- Sep 19 Sporting Clays.....www.6stones.org
- Sep 20 Run in the Dark.....www.communitystorehouse.org
- Sep 27 Boots and Bling Casino Night.....www.ntxsnap.org
- Oct 3 Empowering Seniors 2014.....www.empoweringseniors.com



Independence Day Celebrations!

- Jun 29 Red, White & SoUSA.....www.colleyville.com
- Jul 3 4th of July Parade & Celebration.....www.haslet.org
- Jul 3 Southlake Stars & Stripes.....www.visitsouthlaketexas.com
- Jul 4 Hurst Stars & Stripes.....www.ci.hurst.tx.us
- Jul 4 4thFEST Independence Day Celebration.....www.bedfordtx.gov
- Jul 4 31st Annual Fireworks Extravaganza.....www.grapevinetexasusa.com
- Jul 4 Family 4th Fun & Fireworks Celebration.....www.netarrant.org
(Haltom City, NRH, Richland Hills, Watauga & NE Tarrant Chamber)
- Jul 4 Fort Worth’s 4th.....fortworthsfourth.com
- Jul 4 Trophy Club July 4th Festivities.....www.trophyclub.org

County Closed - Holidays

- July 4 - Independence Day COUNTY HOLIDAY
- September 1 - Labor Day COUNTY HOLIDAY

John Peter Smith Hospital Clinics Northeast Tarrant County

Health Clinics

Gertrude Tarpley JPS Health Center 817-514-5036
6601 Watauga Road, Watauga 76148

JPS Health Center Northeast 817-920-6400
837 Brown Trail, Bedford 76022

School-Based Clinics

Birdville 817-547-3046
8200 O’Brian Way, N. Richland Hills, 76180

Grapevine/Colleyville 817-251-5751
3050 Timberline Drive, Grapevine, 76051

Birdville 817-759-2035
2807 Layton Avenue, Haltom City, 76117

HEB 817- 399-3500
3115 W. Pipeline Road #B, Euless, TX 76040

Georgia Kidwell - HEB 817-399-3366
3115 W. Pipeline Road #D, Euless, TX 76040

For a complete list of Health Clinics and School-Based Clinics log onto: www.jpshealthnet.org

Northeast Social Service Agencies

- 6 Stones Mission Networkwww.6stones.org
- Child Abuse Hotline800-252-5400
- Community Enrichment Center.....www.thecec.org
- GRACE.....www.gracegrapevine.org
- Community Storehouse www.communitystorehouse.org
- United Way of Tarrant County2 - 1 - 1

Pct. 3 ~ Commissioner’s Office

Gary Fickes, Commissioner
gdfickes@tarrantcounty.com

Staff

Carolyn Sims, Precinct Administrator
cssims@tarrantcounty.com

Rebecca Barksdale, Community Outreach Coord.
rbarksdale@tarrantcounty.com

Devin Wenske, Assistant Precinct Administrator
ddwenske@tarrantcounty.com

Theresa Parsons, Executive Secretary
tcparsons@tarrantcounty.com

Southlake Town Hall

1400 Main St #410
Southlake TX 76092

817-481-8234 or 817-581-3600

Fax: 817-481-8053

Additional information on page 3