

TARRANT COUNTY DETAIL STANDARDS

1. Standard Coping
2. Coping at End Wall
3. Standard Sheet Metal Engagement Details
4. Gravel Guard
5. Gravel Guard Wall Termination
6. Gravel Guard, Gutter, and Downspout
7. Gutter Expansion Joint
8. Overflow Scupper
9. Drainage Scupper
10. Overflow Drain
11. New Roof Drain Detail
12. Existing Roof Drain Detail
13. Cricket Between Drains
14. Wall Cricket
15. Corner Wall Cricket
16. Typical Cricket at Equipment Curb
17. Sheet Metal Reglet and Counterflashing
18. Roof Expansion Joint
19. Expansion Joint at Wall
20. Pitch Pan with Hood
21. Multiple Penetration Flashing
22. Miscellaneous Penetration Flashing
23. Standard Vent
24. Plumbing Vent Flashing
25. Roof Hatch
26. Factory Mounted Curbs
27. Curb Mounted Vent
28. Portable Duct Support
29. Pipe Support (diameters 0'-4" and smaller)
30. Pipe Support (diameters larger than 0'-4")
31. Pipe Support
32. Condensate Line Support

Roof System Standard:

Gravel covered, 4 ply, asphalt, fiberglass built-up roof system with 2 layers of rigid board insulation and tapered insulation where necessary to promote drainage.

Approved Primary Roofing Material Manufacturers:

JOHNS-MANVILLE, Roofing Systems Division, Ken-Caryl Ranch, PO Box 5108, Denver, CO 80217.

GAF Building Materials Corporation, 1361 Alps Road, Wayne, NJ 07470.

U.S. INTEC, INC. Roofing and Waterproofing Systems, 6844 E. County Road 405, Alvarado, Texas 76009.

TAMKO Asphalt Products, P.O. Box 398898, Dallas, Texas 75339.

Roof System Alternate (For Energy Star Rated, Cool Roof Rating Council Approved, and Leeds Qualifying Roofing Systems):

2-Ply, SBS, Modified Bitumen roofing system with 2 layers of rigid board insulation and tapered insulation where necessary to promote drainage.
NOTE: Roofing systems that require a coating application and/or reapplication of coating during warranty period (in order to achieve & maintain rating) are not preferred.

Approved Primary Roofing Material Manufacturers:

SIPLAST, Suite 1600 North, 222 West Las Colinas Blvd., Irving, Texas 75039, 972-869-0070.

Approved Siplast System: Paradiene 20/30CRFR with Paradiene 20 (Base Ply) with Siplast Paradiene 30 CRFR (Cap Ply). Torch down system is preferred.

SOPREMA, INC., 310 Quadral Drive, Wadsworth, Ohio 44281, 1-800-356-3521.

Approved Soprema System: Elastophene (Base Ply) with Soprastar (Cap Ply). Torch down system is preferred.

GAF Building Materials Corporation, 1361 Alps Road, Wayne, NJ 07470.

Approved GAF System: Ruberoid Smooth (Base Ply) with Ruberoid Energy Cap FR (Cap Ply). Torch down system is preferred.

Warranty Requirements:

The Roofing Contractor shall submit a letter from the Primary Roofing Material Manufacturer that states the Roofing Contractor is approved to apply the designated roofing systems and qualifies for the Manufacturer's 20 Year Unlimited Penal Warranty (NDL) for defects in both materials and labor. This letter shall be submitted along with the Contractor's proposal. The Roofing Contractor shall have had at least 5 years experience as a Roofing Contractor approved for the installation of 20 Year NDL Warranties from a Primary Roofing Material Manufacturer listed in the specifications.

Primary Roofing Material Manufacturer's Warranty: Upon completion of the roof the contractor shall provide the Owner a 20 Year NDL Warranty for both Materials and Labor with no limit to the Penal Sum from the Primary Roofing Material Manufacturer as published in their latest literature.

Contractor's Warranty: A 2-year Roofing Contractor's Warranty is required. In addition, the contractor shall provide a notarized document from an authorized agent on company letterhead stating the following:

Two-year Contractor's Warranty

The building, roofing membrane, sealant work (if applicable) and flashings are in conformance with all the requirements of the primary roofing material manufacturer and qualify for the _____ guarantee (maximum guarantee available) from the _____
(Primary roofing material manufacturer selected)

In addition, should deficiencies (blisters, splits, etc.) and/or leaks occur within the first two years, the roofing contractor should make repairs as required to maintain the building in watertight condition, in conformance with the requirements in these contract documents, and the requirements of the primary roofing material manufacturer.

Repairs shall be made in a permanent manner in conformance with the standards provided in this document. Any defect causing a leak shall be corrected.

Damage resulting from hurricane force winds, hail, fire, unusual structural movement, structural failure, and abuse are excluded from this agreement. This agreement in no way absolves the Contractor or Primary Roofing Material Manufacturer from any implied or expressed warranties or fitness for purpose.

Prefinished Metal Warranty: Provide a 20-year warranty from the Prefinished Sheet Metal Manufacturer covering the finish on the prefinished sheet metal.

General Roofing Issues:

1. Flashings shall not be closer than 18 inches from other flashings and be situated so no flashing interferes with another.
2. Any new HVAC curbs must of sufficient height to accommodate an 8” base flashing height after installation of the insulation and roofing membrane including any crickets. This is typically a 14” tall curb.

Accessories:

Kettle Afterburner System and Safety Loader shall be an Afterburner System with Safety Loader as Manufactured by Reeves Roofing Equipment Co. Inc., P.O. Box 720, Helotes, Texas 1-800-383-3063, (or equal).

Roof Signage: Contractor shall provide 10 inch x 12-inch minimum size painted signs made of aluminum with a dark color background and letters of contrasting color. Use paints compatible with the aluminum. Make the sign to read as shown. Permanently post signs at all access points leading to the roofs and prominent points on the roofs. Provide at least one sign on each roof with no more than four signs per building. The sign will appear like the following:

<p style="text-align: center;">DO NOT MAKE REPAIRS OR ALTERATIONS TO THIS ROOF WITHOUT APPROVAL FROM THE DIRECTOR OF OPERATIONS AND MAINTENANCE OFFICE</p> <p style="text-align: center;">This roof is guaranteed until (1) by:</p> <p style="text-align: center;">PRIMARY ROOFING MATERIAL MANUFACTURER (2) Address City, State, Zip Code Phone: Area Code/Number Guarantee # (3)</p> <p style="text-align: center;">The Roofing Contractor was:</p> <p style="text-align: center;">ROOFING CONTRACTOR (4) Address City, State, Zip Code Phone: Area Code/Number</p> <p style="text-align: center;">-----</p>
--

SIGNS TO BE POSTED AS DESIGNATED BY OWNER

- (1) Insert month and year (___ years after final acceptance date)
- (2) Insert the Primary Roofing Material Manufacturer's name, address and phone number.
- (3) Insert the Primary Roofing Material Manufacturer's Guaranty Number
- (4) Insert the Contractor's name, address and phone number.

Roof Drainage:

1. Properly design and slope the roofing system so as to provide positive slope to all drains to avoid ponding water.
2. Specify tapered polyisocyanurate for all crickets and roof edges as required meeting the manufacturer's requirements and meeting the performance requirements of the project. All crickets must provide a minimum NET slope of 1/4" per foot.
3. Provide adequate overflow drainage capacity according to code requirements.
4. Design either an internal roof drain system or a gravel guard and gutter system. DO NOT design a concealed gutter system.

Rigid Board Insulation shall typically be as follows. Verify with code requirements.

1. The first layer shall be 1 layer of 2.5" polyisocyanurate meeting FS HH-I-1972/2 and be classified for use in UL Class A and FM Class I approved systems and covered under the Primary Roofing Material Manufacturer's Warranty. The maximum board size of Polyisocyanurate shall be 4'-0" x 4'-0" for all deck types except for steel decks which can utilize a 4'-0" x 8'-0" board size.
2. The second layer shall be 1 layer of 1" perlite meeting ASTM C 728 approved and covered under the Primary Roofing Material Manufacturer's Warranty.
3. For Alternate Modified Bitumen Roofing Systems, the second layer of insulation shall be either 1/4" Securock Roof Board as manufactured by US Gypsum Company (USG), or 1/4" DensDeck Roof Board as manufactured by Georgia-Pacific (GP). Consult Roofing Manufacturer with regards to primer requirements (if needed) and or use of pre-primed Roof Boards depending upon roof application method.

Wind Uplift:

1. Code requires uplift calculations based on ASCE-7. We recommend that the uplift calculations be provided in the specification as shown below. We also recommend providing the corresponding FMG rating since many roofing manufacturer's test to FMG recommendations.

"Roofing System Design Requirements (Wind Uplift): Provide a roofing system that is identical to systems that have been successfully tested by a qualified testing and inspecting agency to resist uplift pressure calculated according to ASCE 7."

2. State that the insulation attachment must meet the Performance Requirements for wind uplift of the roofing system in the specifications.

Sheet Metal:

1. Quality Assurance: The design requirements for sheet metal should be described in the Specifications as they relate to wind uplift requirements.
 - a. The sheet metal flashings should be designed to resist the wind uplift forces imposed on the building per FMG Loss Prevention Data Sheet 1-49 (this is a prescriptive method of design). The Architect should consult FM 1-49 to insure proper design and attachment methods of sheet metal.
 - b. The sheet metal flashings should also be designed to meet ANSI/SPRI ES-1-98, which is based on tests of edge details. The Architect should consult ANSI/SPRI ES-1-98 to insure proper design and attachment methods of sheet metal.
2. Metal Wall Panels: Install prefinished metal wall panels when parapet walls exceed 2'-0" in height above the roof. Install #30 felt or Ice & Water Shield as an underlayment for the wall panels.

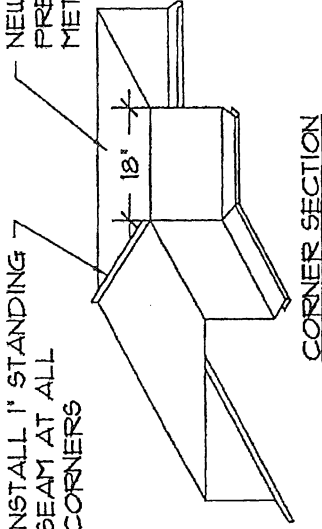
Waterproofing:

1. Include weep holes for proper draining of the thru-wall flashing system.
2. Anchor the thru-wall flashing to the wall sheathing/substrate and seal the top of the flashing to the wall sheathing in continuous mastic.
3. The waterproofing membrane should be turned up (vertically) at all end walls extending under the moisture barrier installed on the wall sheathing.
4. Install the membrane damproofing from face-to-face in order to provide full protection across the width of the wall.

INSTALL A NEW CONTINUOUS BEAD OF SEALANT UNDER BOTH EDGES OF COVERPLATE. EXTEND BEAD OF SEALANT DOWN BOTH VERTICAL FACES OF COPING. (ALT. PROVIDE 1" STANDING SEAM AT JOINTS)

INSTALL 1" STANDING SEAM AT ALL CORNERS

NEW 24 GA. PREFINISHED SHEET METAL COPING



INSTALL NEW MIN. 6" WIDE 24 GA. PREFINISHED METAL COVER PLATE AT JOINTS OF COPING.

NEW FLEXIBLE VAPOR RETARDER

ANCHOR 12" o.c. FASTENER TO HAVE EPDM OR NEOPRENE WASHER

NEW CONTINUOUS TREATED 2X WOOD BLOCKING AS SHOWN ON DETAIL. ATTACH TO EXISTING CONSTRUCTION WITH APPROPRIATE FASTENERS COUNTERSINK AS NECESSARY.

EXISTING CONSTRUCTION

NEW 24 GA. PREFINISHED SHEET METAL COPING
NEW TAPERED EDGE (1" PER FOOT SLOPE)

PROVIDE STIFFENER IF COPING FACE EXCEED 6' IN HEIGHTS

22 GA G.I. SHEET METAL CONTINUOUS CLEAT. ANCHOR 12" o.c.

NEW COPING TO EXTEND BEYOND EXITING (REMOVED) COPING

COPING DETAIL

STANDARD COPING

ROOF TECHNICAL SERVICES, INC.

ROOFTeCH

Architects
Engineers
Roof Consultants
Fax (817) 451-9946

1944 HANDLEY DRIVE
FORT WORTH, TX 76112
(817) 496-4631
(817) 429-8256 Metro

STANDARD DETAILS
TARRANT COUNTY

SHEET:

1

DRAWN	ML
CHECK	CLC
DATE	02/06/07
SCALE	NTS
JOB NO.	071-001

NEW LEAD WEDGES AND NEW CONT. SEALANT

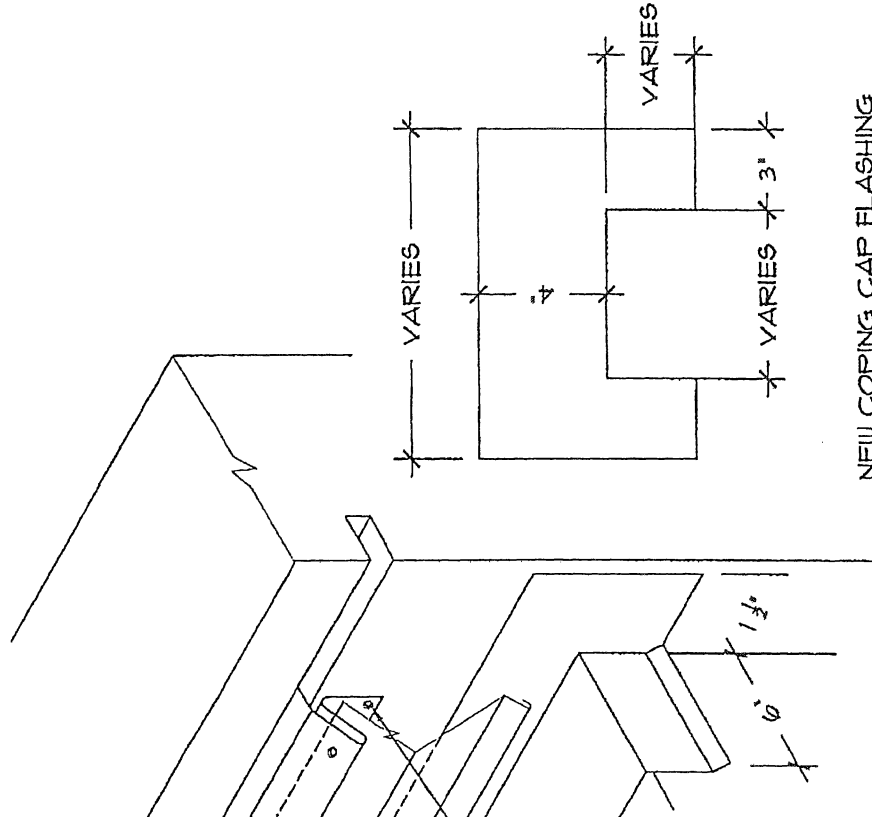
SAW CUT REGLET & INSERT NEW 24 GA. PREFINISHED SHEET METAL RECEIVER

ANCHOR 12" O.C. FASTENERS TO HAVE EPDM OR NEOPRENE WASHER.

NEW 24 GA. PREF. SHEET METAL COUNTERFLASHING - EXTEND 3" BEYOND SPLICE PLATE E.W.

NEW 24 GA. G.I. SHEET METAL UNDER-PLATE - TYP. END WALL POP RIVET & SOLDER ALL JOINTS WATERTIGHT.

ANCHOR 12" O.C.



NEW COPING CAP FLASHING

NOTE:

- 1) 24 GA. PREFINISHED SHEET METAL COPING NOT SHOWN FOR CLARITY.
- 2) TURN PREFINISHED SHEET METAL COPING UP AT WALL MIN. 4".
- 3) INSTALL PREFINISHED SHEET METAL COPING CAP FLASHING POP RIVET AND SEAL. SEE ENLARGED DETAIL FOR COPING CAP FLASHING.

COPING AT END WALL

ROOF TECHNICAL SERVICES, INC.

ROOFTTECH

Architects
Engineers
Roof Consultants
Fax (817) 451-9946

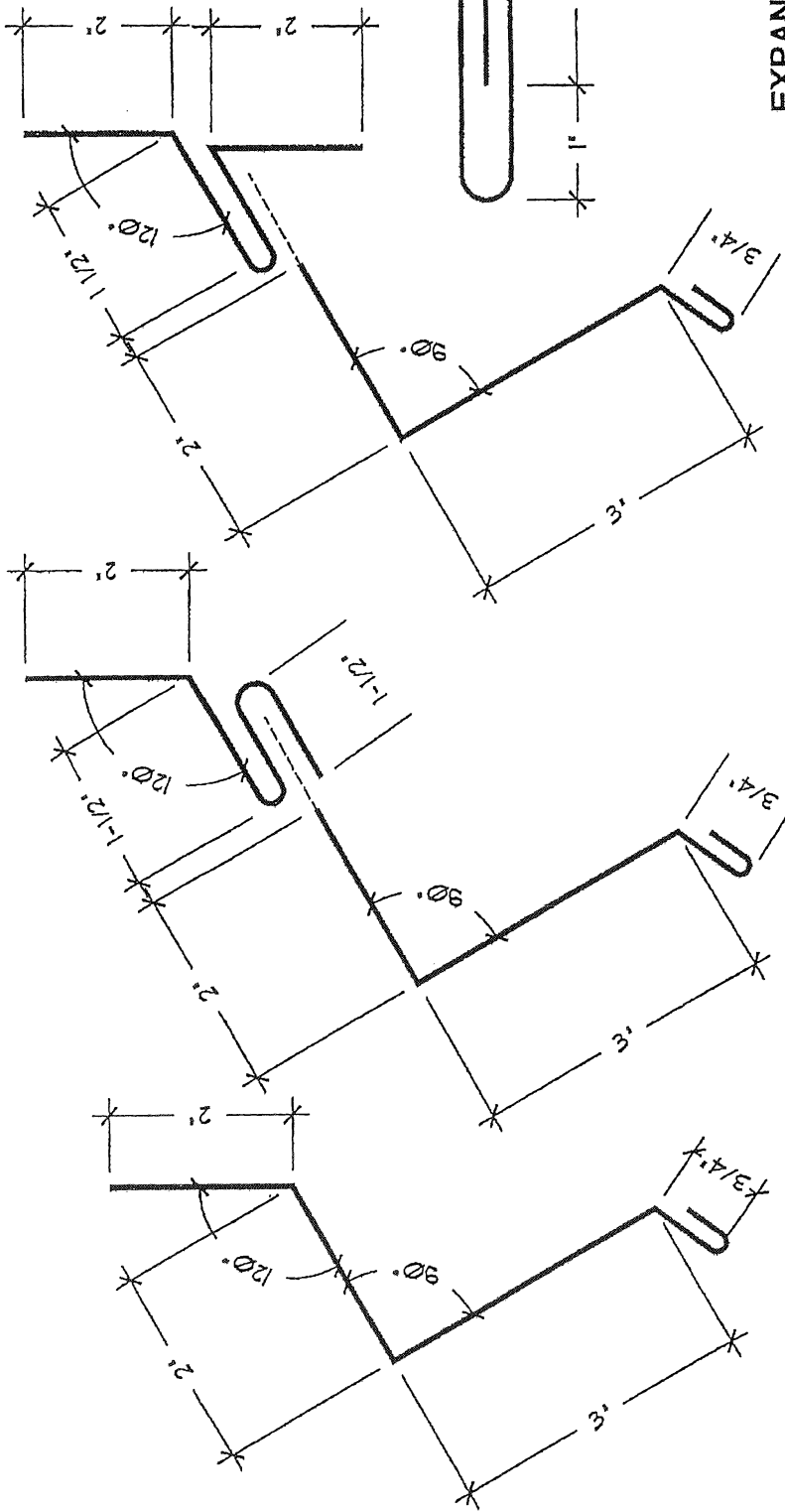
1944 HANDLEY DRIVE
FORT WORTH, TX. 76112
(817) 496-4631
(817) 423-8256 Metro

STANDARD DETAILS
TARRANT COUNTY

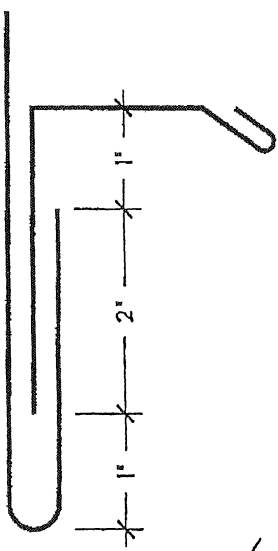
SHEET:

2

DRAWN	ML
CHECK	CLC
DATE	02/06/07
SCALE	NTS
JOB NO.	07-001



EXPANSION JOINT
CLIP DETAIL



STANDARD SHEET METAL ENGAGEMENT DETAILS

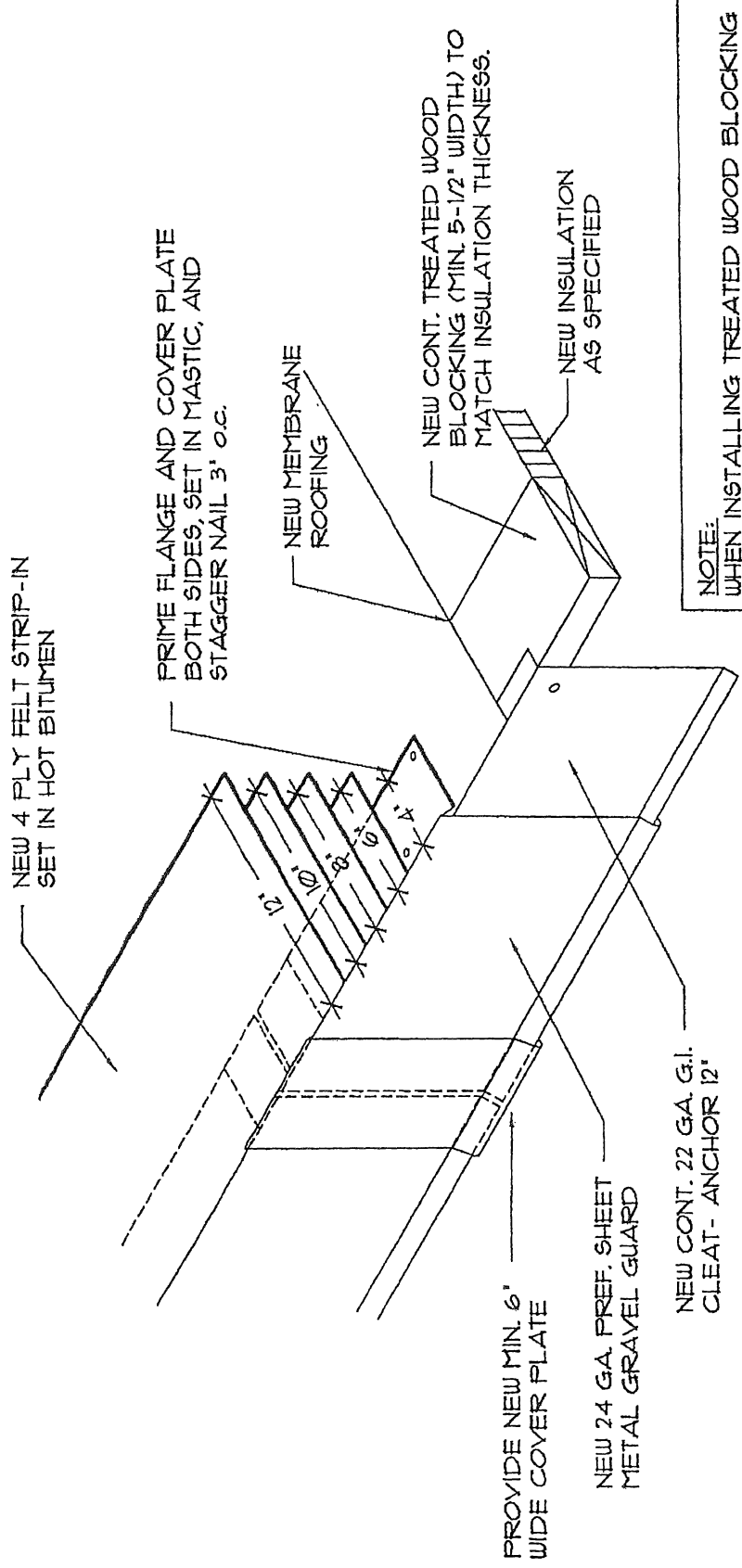
STANDARD DETAILS
TARRANT COUNTY

ROOF TECHNICAL SERVICES, INC.
ROOFTECH
 Architects
 Engineers
 Roof Consultants
 Fax (817) 457-9946

1944 HANDLEY DRIVE
 FORT WORTH, TX 76112
 (817) 496-4631
 (817) 423-8256 Metro

DRAWN	ML
CHECK	CLC
DATE	02/06/07
SCALE	NTS
JOB NO.	07-001

SHEET:
3



NOTE:
 WHEN INSTALLING TREATED WOOD BLOCKING OVER STEEL DECK, INSTALL ICE AND WATER SHIELD, OR EQUIVALENT, BETWEEN PRESSURE TREATED WOOD AND STEEL DECK AND ACCESSORIES.

GRAVEL GUARD

ROOF TECHNICAL SERVICES, INC.

ROOFTeCH

Architects
 Engineers
 Roof Consultants

1844 HANDLEY DRIVE
 FORT WORTH, TX 76112

(817) 486-4631
 (817) 423-8256 Metro

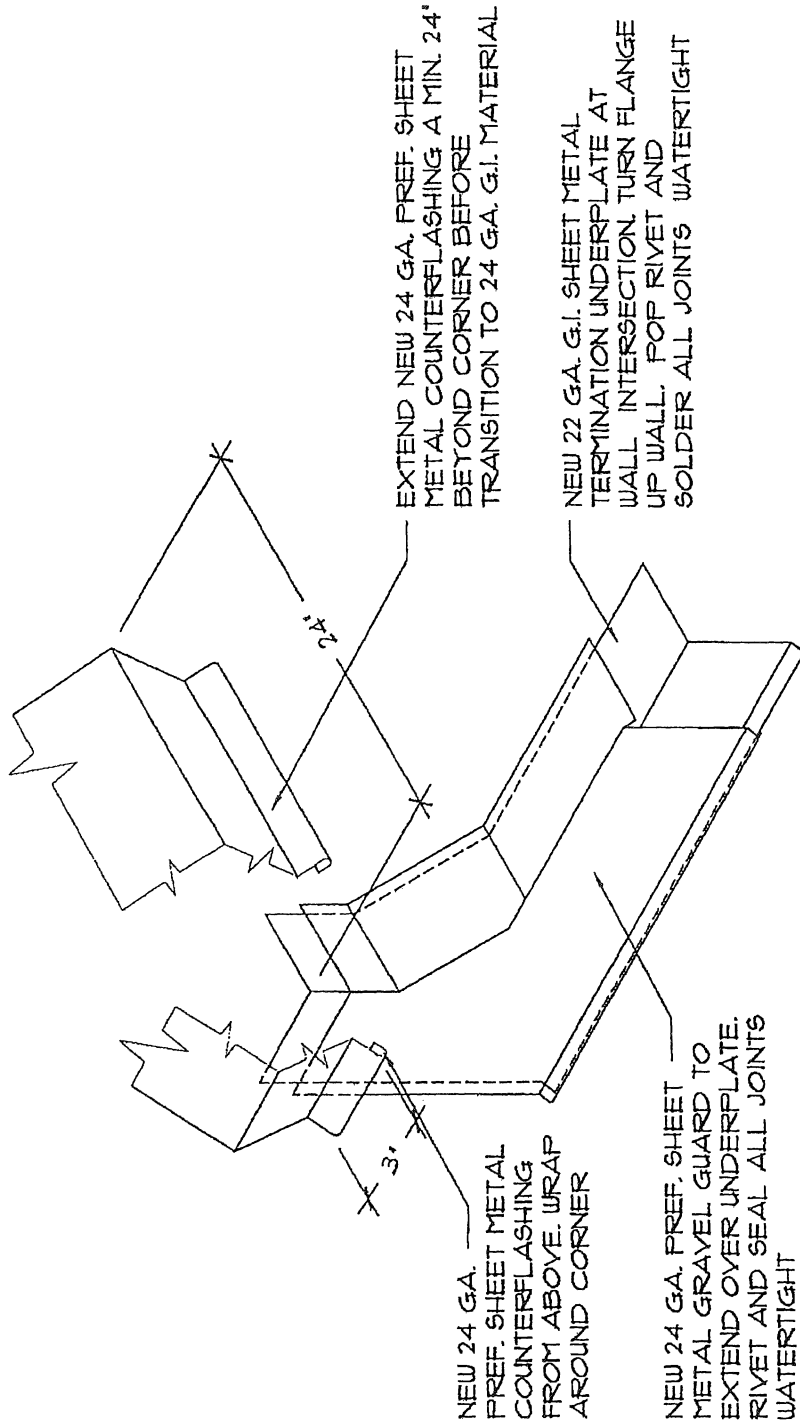
Fax (817) 457-9846

STANDARD DETAILS
 TARRANT COUNTY

DRAWN	ML
CHECK	CLC
DATE	02/06/07
SCALE	NTS
JOB NO.	07-001

SHEET:

4



GRAVEL GUARD WALL TERMINATION

ROOF TECHNICAL SERVICES, INC.

ROOFTECH

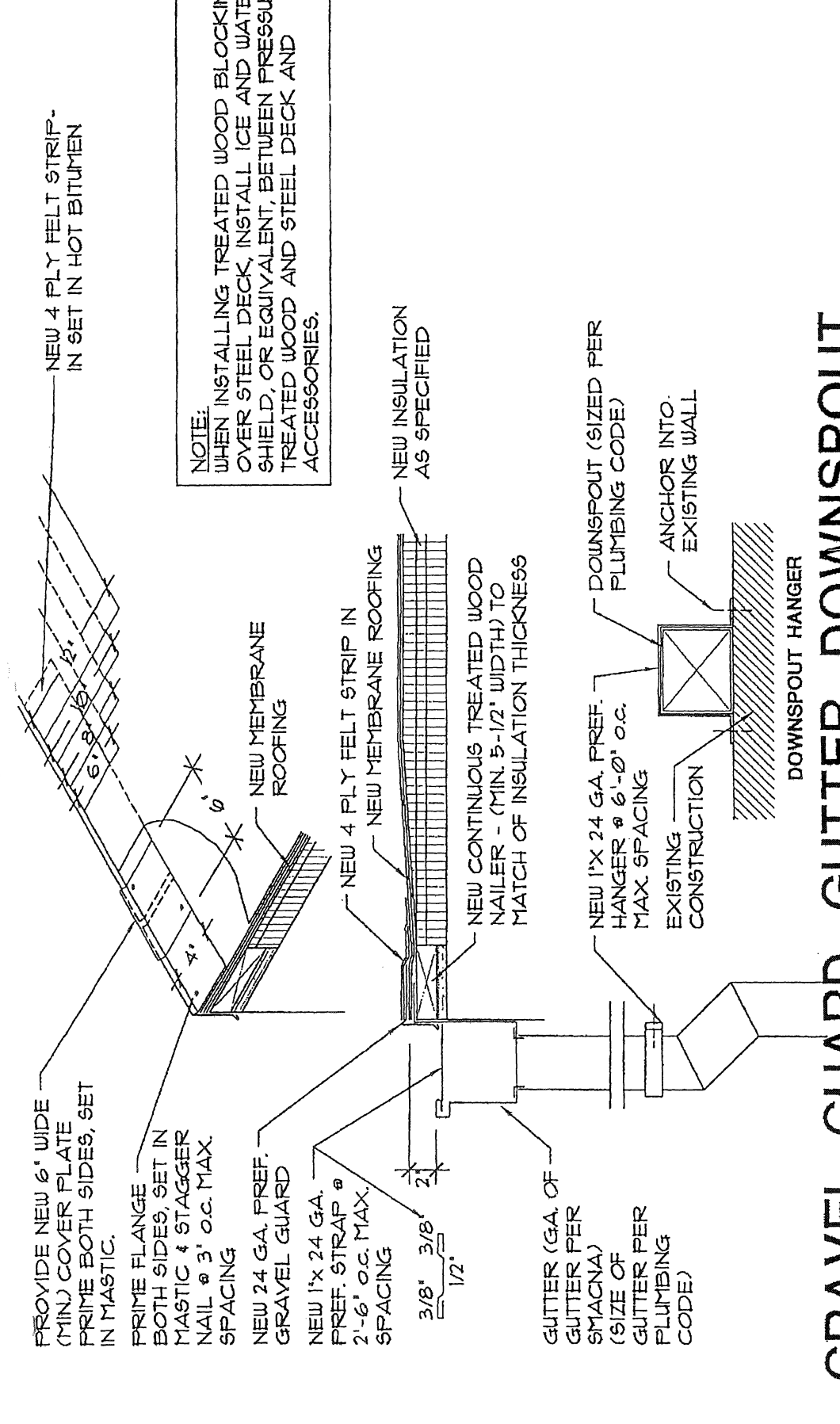
Architects
Engineers
Roof Consultants
Fax (817) 451-9946

STANDARD DETAILS
TARRANT COUNTY

SHEET:

5

DRAWN	ML
CHECK	CLC
DATE	02/06/07
SCALE	NTS
JOB NO.	07-001



NOTE:
 WHEN INSTALLING TREATED WOOD BLOCKING OVER STEEL DECK, INSTALL ICE AND WATER SHIELD, OR EQUIVALENT, BETWEEN PRESSURE TREATED WOOD AND STEEL DECK AND ACCESSORIES.

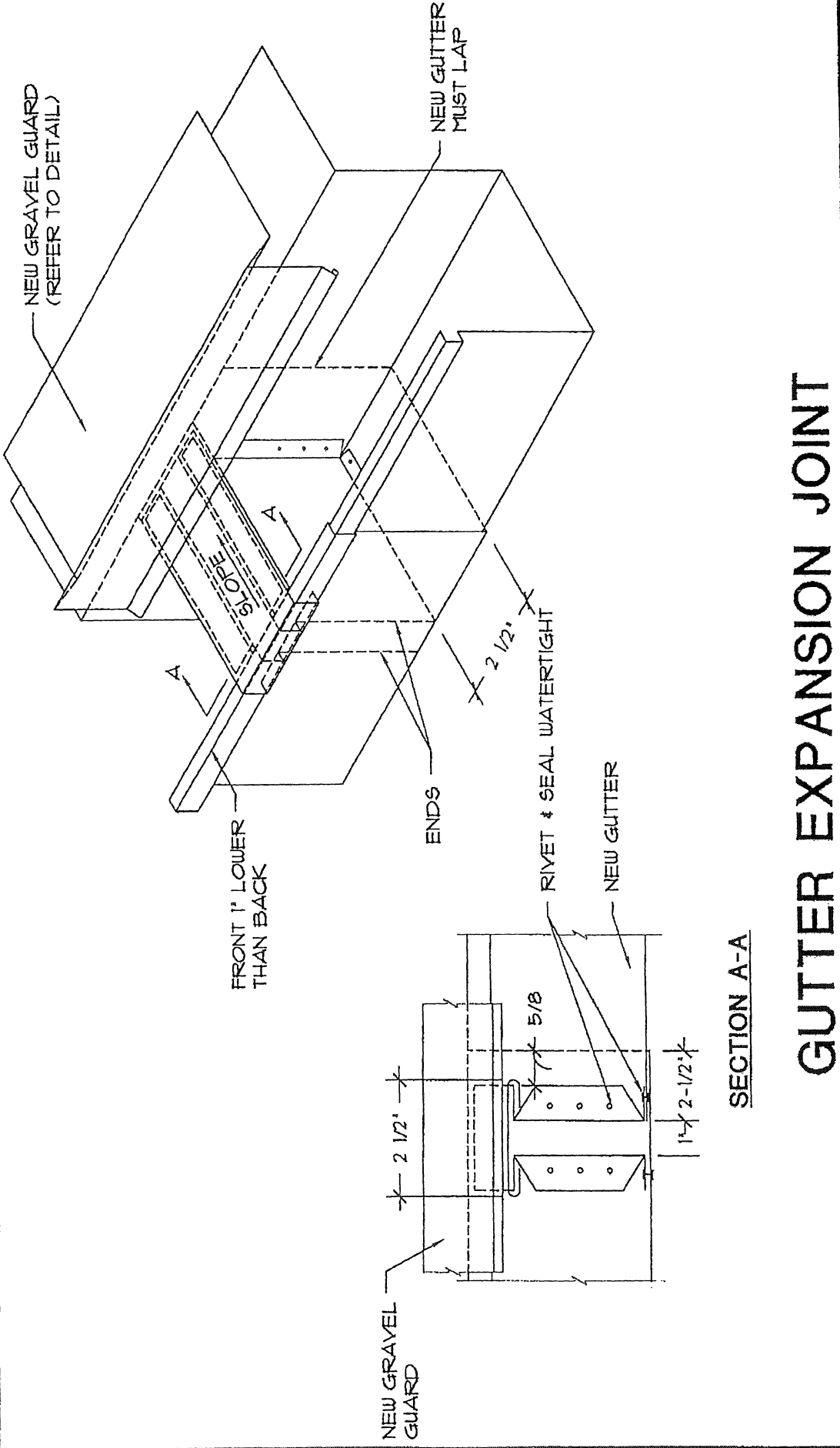
GRAVEL GUARD, GUTTER, DOWNSPOUT

ROOF TECHNICAL SERVICES, INC.
ROOFTECH
 Architects
 Engineers
 Roof Consultants
 Fax (817) 451-9946

STANDARD DETAILS
 TARRANT COUNTY

DRAWN	ML
CHECK	CLC
DATE	02/06/07
SCALE	NTS
JOB NO.	07-001

SHEET:
6



GUTTER EXPANSION JOINT

SECTION A-A

STANDARD DETAILS
TARRANT COUNTY

DRAWN	ML	SHEET:	7
CHECK	CLC		
DATE	02/06/01		
SCALE	NTS		
JOB NO.	07-001		

ROOF TECHNICAL SERVICES, INC.

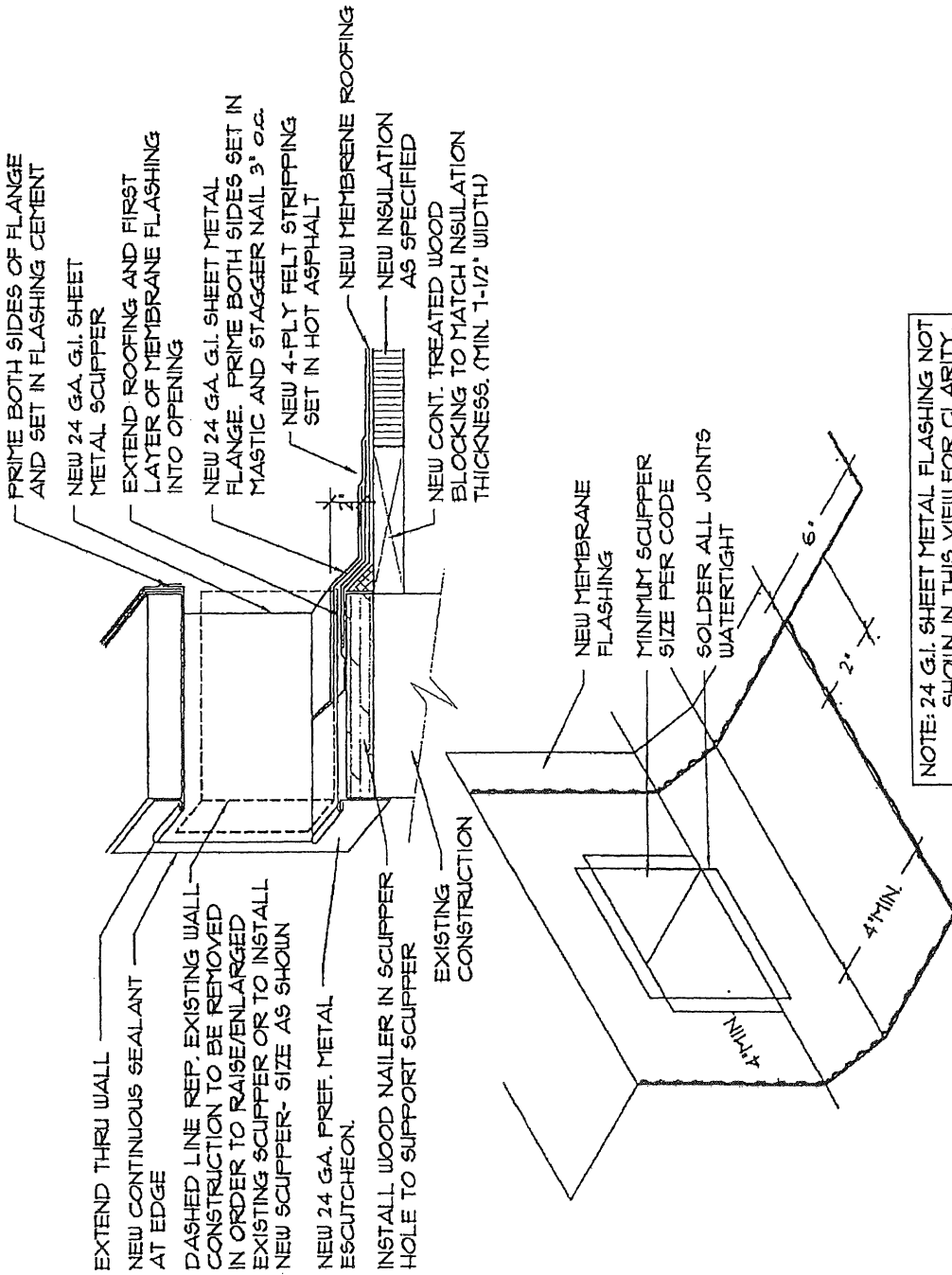
ROOFTECH

Architects
Engineers
Roof Consultants

1944 HANDLEY DRIVE
FORT WORTH, TX 76112

(817) 496-4631
(817) 429-8256 Metro

Fax (817) 457-9946



NOTE: 24 G.I. SHEET METAL FLASHING NOT SHOWN IN THIS VIEW FOR CLARITY.

OVERFLOW SCUPPER

STANDARD DETAILS
TARRANT COUNTY

ROOF TECHNICAL SERVICES, INC.

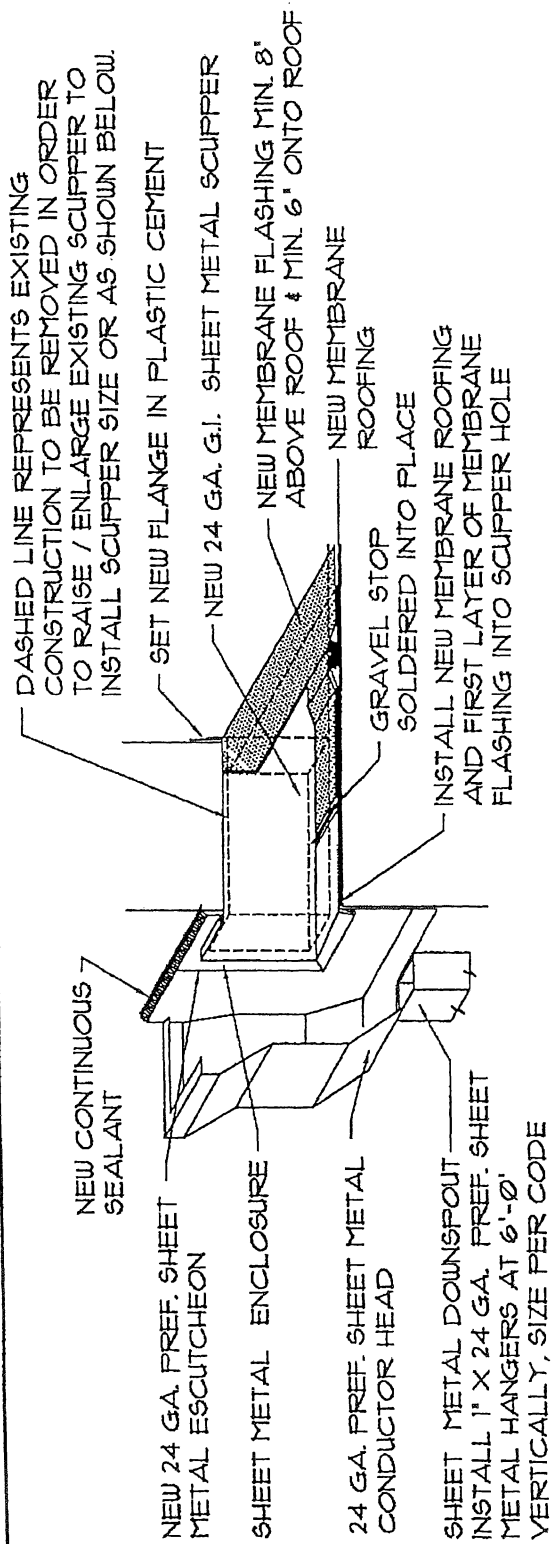


1944 HANDLEY DRIVE
 FORT WORTH, TX 76112
 (817) 456-4631
 (817) 457-9946 Metro
 Architects
 Engineers
 Roof Consultants
 Fax (817) 457-9946

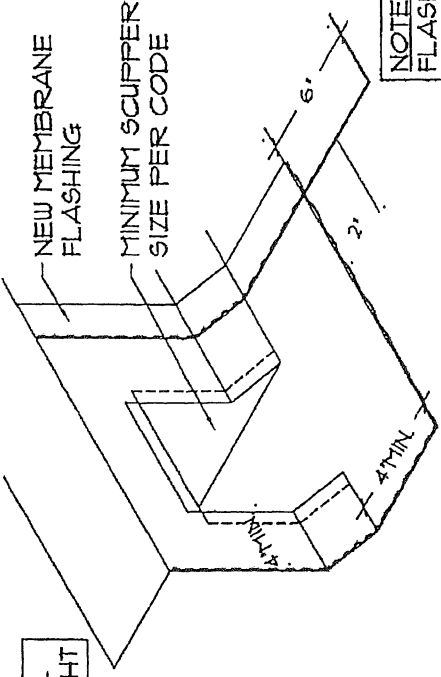
DRAWN	ML
CHECK	CLC
DATE	02/06/07
SCALE	NTS
JOB NO.	07-001

SHEET:

8



NOTE: ALL SCUPPER JOINTS SHALL BE RIVETED SOLDERED WATERTIGHT



NOTE: NEW 24 GA. G.I. SHEET METAL FLASHING NOT SHOWN IN THIS VIEW FOR CLARITY.

DRAINAGE SCUPPER

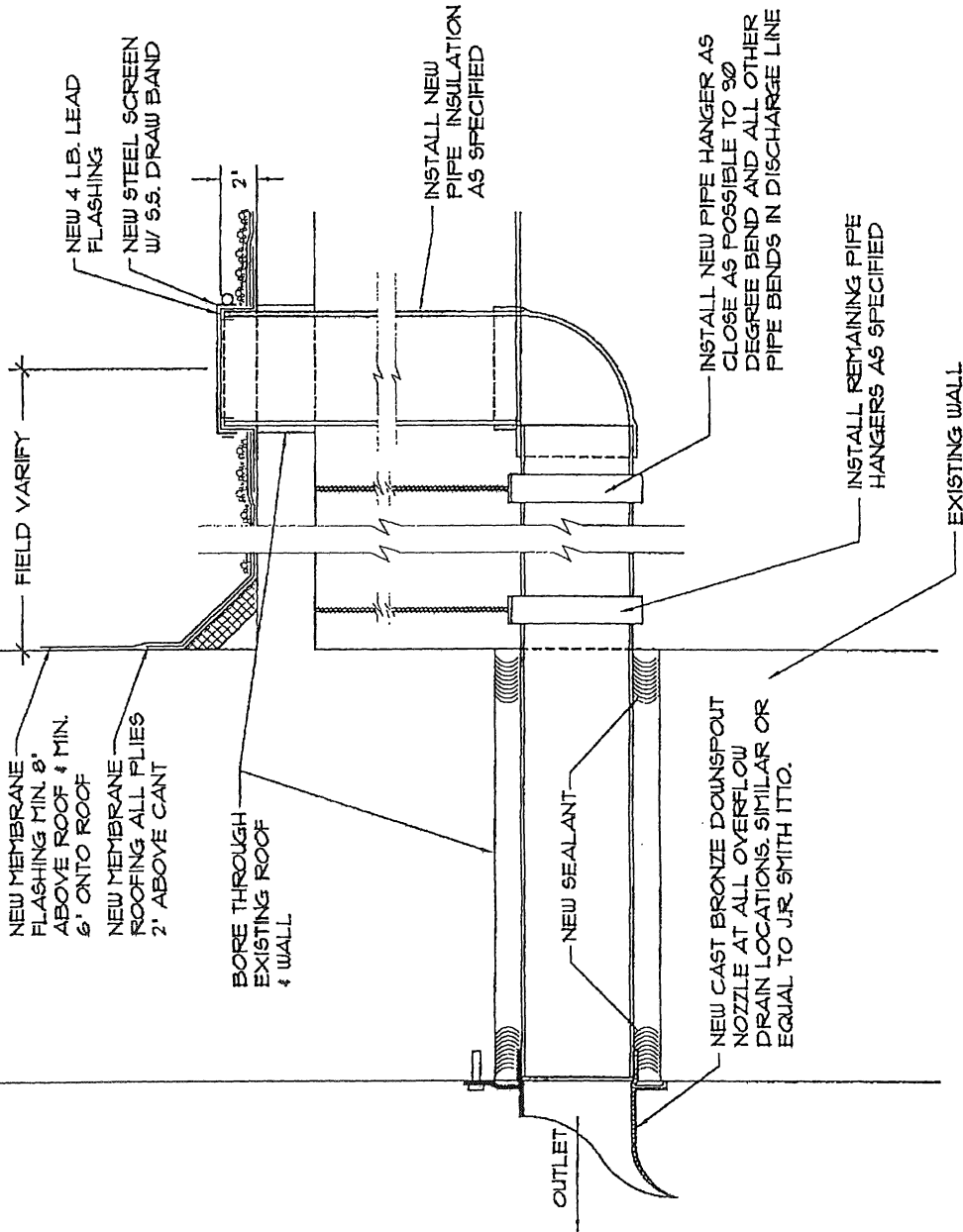
ROOF TECHNICAL SERVICES, INC.
ROOFTeCH
 Architects
 Engineers
 Roof Consultants
 Fax (817) 457-9946

1944 HANDLEY DRIVE
 FORT WORTH, TX 76112
 (817) 496-4631
 (817) 479-8256 Metro

STANDARD DETAILS
 TARRANT COUNTY

DRAWN	ML
CHECK	CLC
DATE	02/06/07
SCALE	NTS
JOB NO.	07-001

SHEET:
9



OVERFLOW DRAIN

STANDARD DETAILS
TARRANT COUNTY

ROOF TECHNICAL SERVICES, INC.

ROOFTTECH

1944 HANDLEY DRIVE
FORT WORTH, TX 76112
(817) 496-4631
(817) 429-8256 Metro

Architects
Engineers
Roof Consultants
Fax (817) 457-9946

SHEET:

10

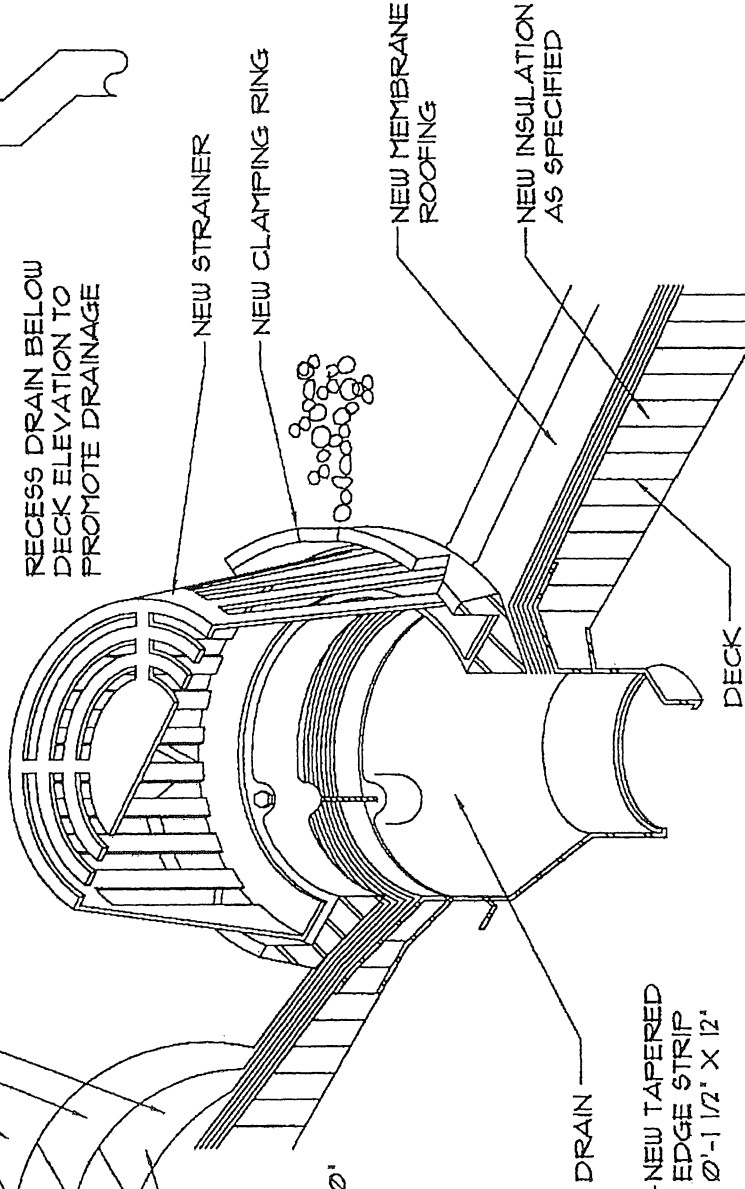
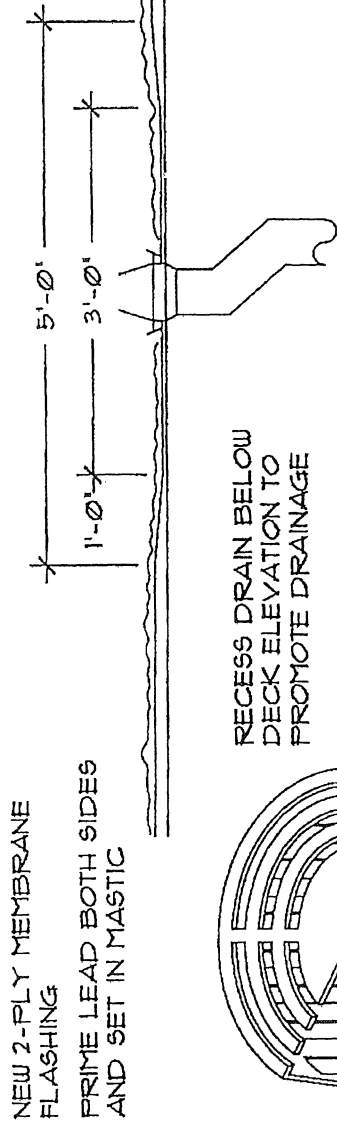
DRAWN ML

CHECK CLC

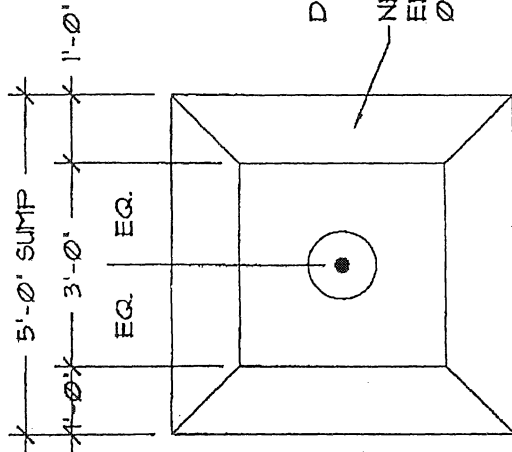
DATE 02/06/07

SCALE NTS

JOB NO. 07-001



NEW 30' X 30' X 2 1/2" LB. LEAD



NEW ROOF DRAIN DETAIL

ROOF TECHNICAL SERVICES, INC.
ROOFTTECH
 Architects
 Engineers
 Roof Consultants
 Fax (817) 451-9946

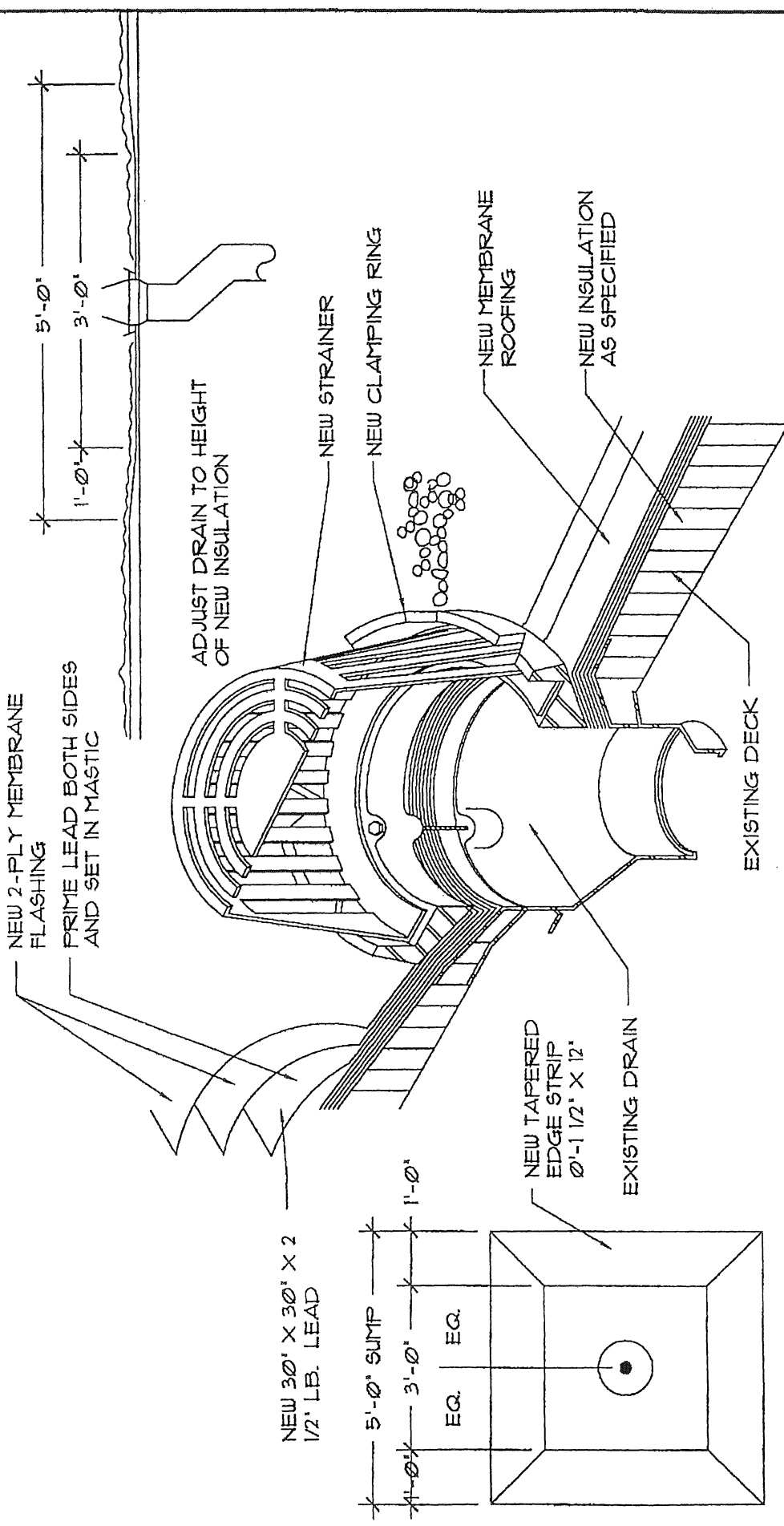
1944 HANDLEY DRIVE
 FORT WORTH, TX 76112
 (817) 496-4631
 (817) 429-8256 Metro

STANDARD DETAILS
 TARRANT COUNTY

SHEET:

11

DRAWN	ML
CHECK	CLC
DATE	02/06/07
SCALE	NTS
JOB NO.	07-001



EXISTING ROOF DRAIN DETAIL

DRAWN	ML	SHEET:	12
CHECK	CLC		
DATE	02/06/07		
SCALE	NTS		
JOB NO.	07-001		

STANDARD DETAILS
TARRANT COUNTY

ROOF TECHNICAL SERVICES, INC.

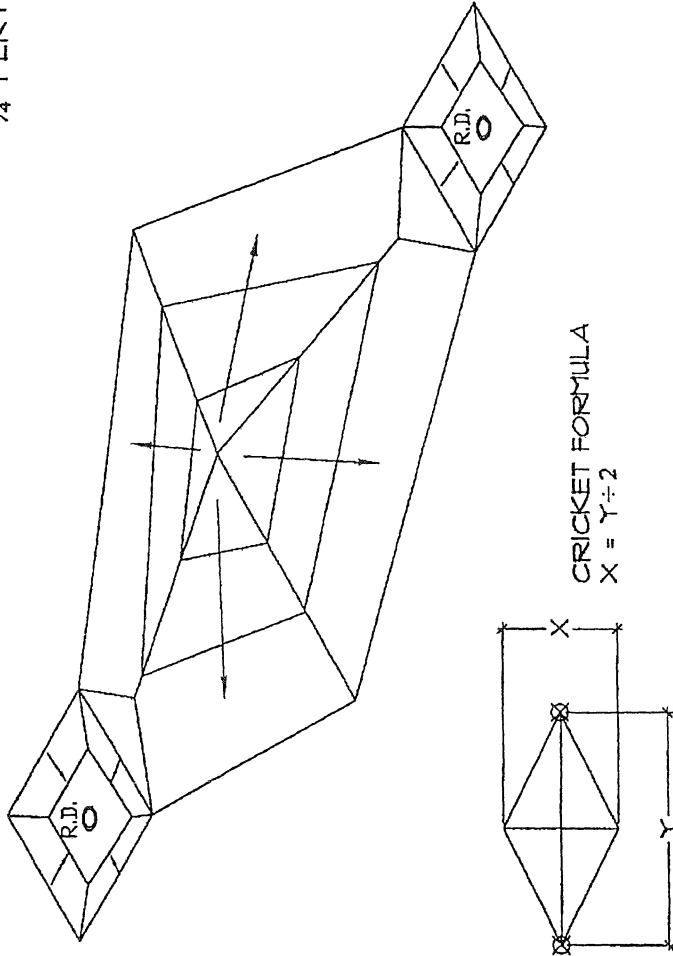
ROOFTeCH

Architects
Engineers
Roof Consultants

1944 HANDLEY DRIVE
FORT WORTH, TX, 76112
(817) 496-4631
(817) 429-0256 Metro

Fax (817) 451-9946

TAPERED INSULATION TO
ACHIEVE A NET SLOPE OF
1/4" PER FOOT



CRICKET BETWEEN DRAINS

ROOF TECHNICAL SERVICES, INC.
ROOFTeCH
Architects
Engineers
Roof Consultants
Fax (817) 457-9946

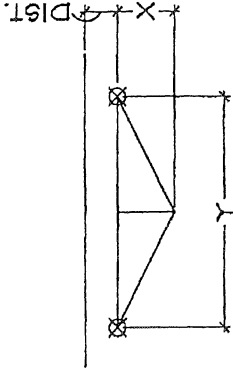
1944 HANDLEY DRIVE
FORT WORTH, TX 76112
(817) 496-4631
(817) 429-8256 Metro

STANDARD DETAILS
TARRANT COUNTY

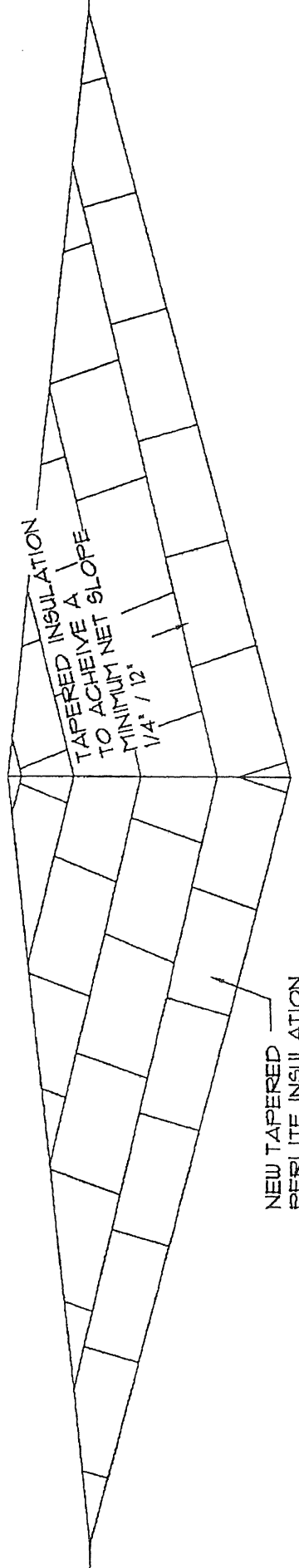
SHEET:

13

DRAWN	ML
CHECK	CLC
DATE	02/06/07
SCALE	NTS
JOB NO.	07-001



CRICKET FORMULA
 $X = Y \div 4 + \text{DIST.}$



WALL CRICKET

ROOF TECHNICAL SERVICES, INC.
ROOFTECH
 Architects
 Engineers
 Roof Consultants
 Fax (817) 457-9946

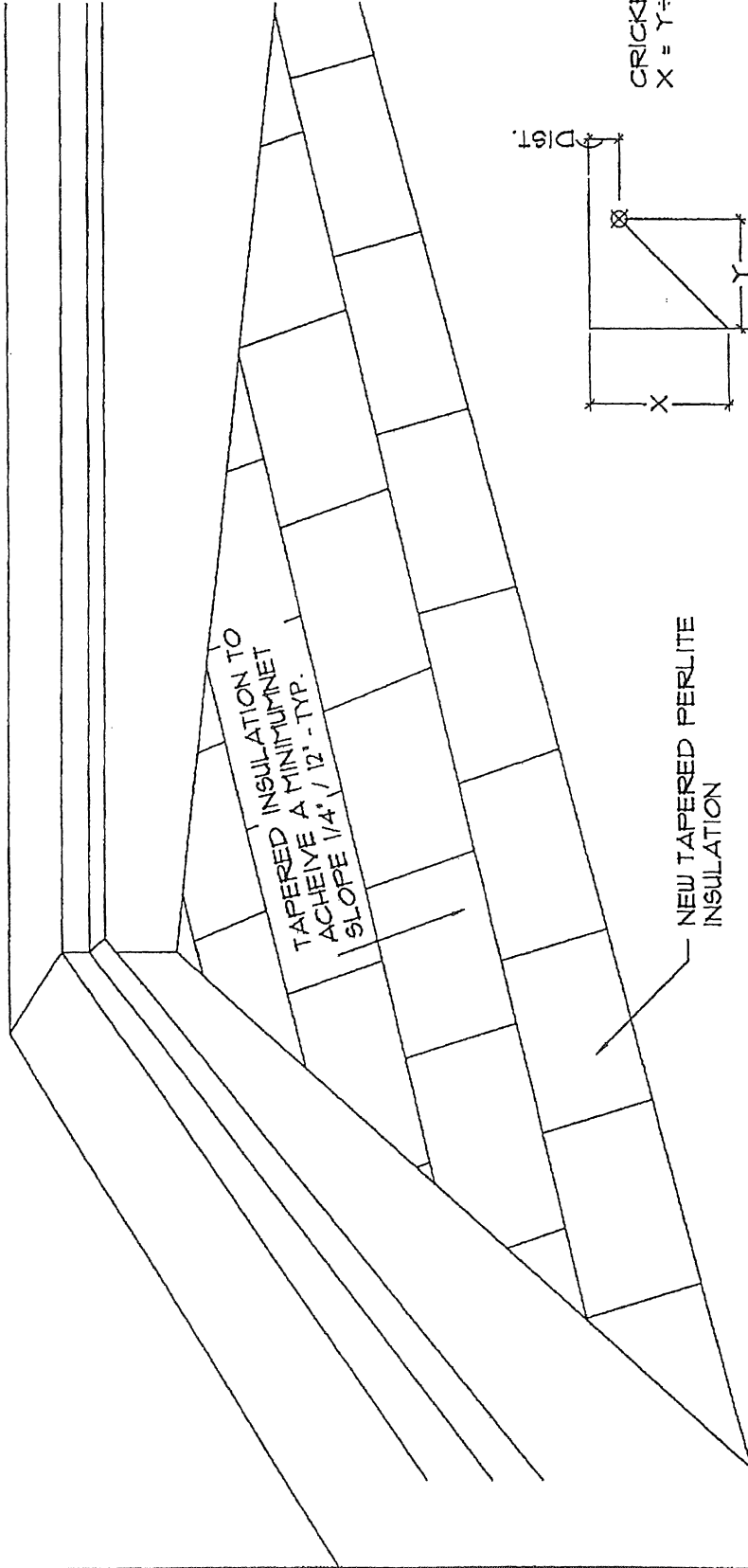
1944 HANDLEY DRIVE
 FORT WORTH, TX 76112
 (817) 496-4631
 (817) 429-8256 Metro

STANDARD DETAILS
 TARRANT COUNTY

SHEET:

14

DRAWN	ML
CHECK	CLC
DATE	02/06/07
SCALE	NTS
JOB NO.	07-001



CRICKET FORMULA
 $X = Y \div 2 + \text{DIST.}$

CORNER WALL CRICKET

STANDARD DETAILS
 TARRANT COUNTY

ROOF TECHNICAL SERVICES, INC.

ROOFTTECH

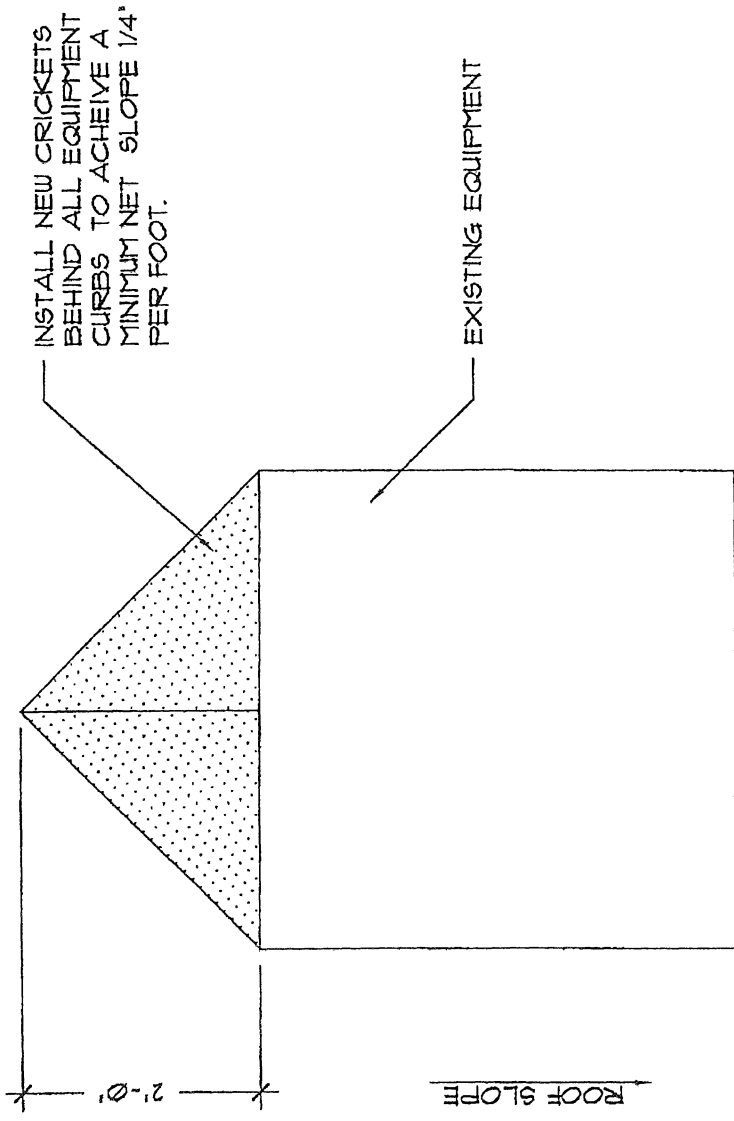
1944 HANDLEY DRIVE
 FORT WORTH, TX 76112
 (817) 456-4631
 (817) 429-8256 Metro

Architects
 Engineers
 Roof Consultants
 Fax (817) 457-9946

SHEET:

15

DRAWN	ML
CHECK	CLC
DATE	02/06/07
SCALE	NTS
JOB NO.	07-001



TYPICAL CRICKET AT EQUIPMENT CURB

ROOF TECHNICAL SERVICES, INC.
ROOFTeCH
 Architects
 Engineers
 Roof Consultants
 Fax (817) 457-9946

1944 HANDLEY DRIVE
 FORT WORTH, TX 76112
 (817) 496-4631
 (817) 423-0256 Metro

STANDARD DETAILS
 TARRANT COUNTY

DRAWN	ML
CHECK	CLC
DATE	02/06/07
SCALE	NTS
JOB NO.	07-001

SHEET METAL REGLET AND COUNTERFLASHING

ROOF TECHNICAL SERVICES, INC.

ROOFTECH

Architects
Engineers
Roof Consultants
Fax (817) 451-9946

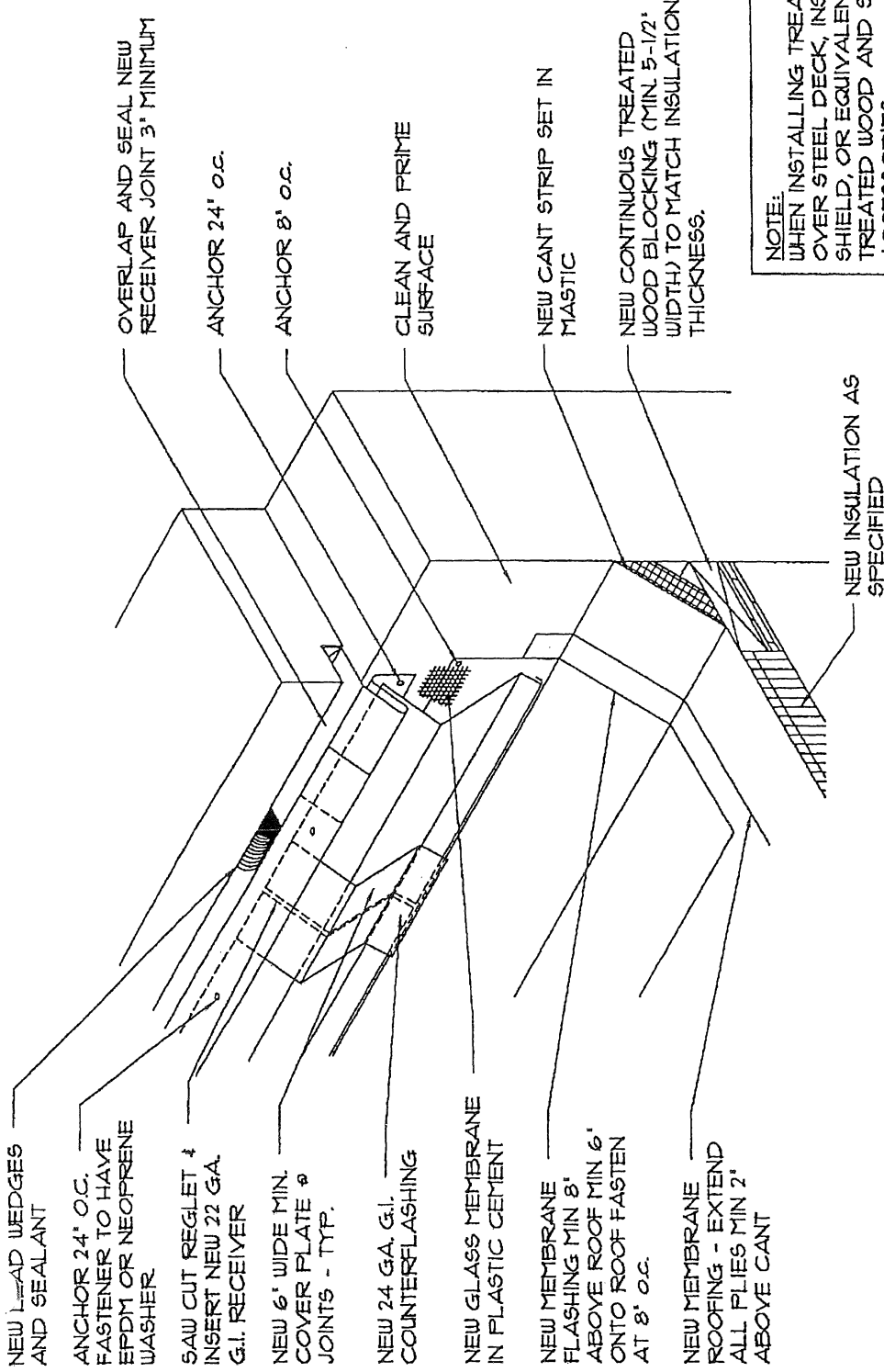
1944 HANDLEY DRIVE
FORT WORTH, TX 76112
(817) 496-4631
(817) 429-8256 Metro

STANDARD DETAILS
TARRANT COUNTY

SHEET:

17

DRAWN	ML
CHECK	CLC
DATE	02/06/01
SCALE	NTS
JOB NO.	07-001



NOTE:
WHEN INSTALLING TREATED WOOD BLOCKING OVER STEEL DECK, INSTALL ICE AND WATER SHIELD, OR EQUIVALENT, BETWEEN PRESSURE TREATED WOOD AND STEEL DECK AND ACCESSORIES.

ANCHOR 24' o.c. FASTENERS TO HAVE EPDM OR NEOPRENE WASHER

NEW MEMBRANE FLASHING. MIN. 8" ABOVE ROOF AND MIN. OF 6" ONTO ROOF. ANCHOR 8' o.c. AT TOP OF MEMBRANE. SEAL TOP OF MEMBRANE WITH PLASTIC CEMENT AND FIBERGLASS MESH.

NEW MEMBRANE ROOFING. EXTEND ALL FLIES A MIN. OF 2" ABOVE CANT.

NEW INSULATION AS SPECIFIED

STEEL DECK

NEW COMPRESSIBLE INSULATION

NEW CONT. 2X TREATED WOOD NAILERS AND WOOD CANT

NEW FLEXIBLE VAPOR RETARDER

NEW 24 GA. GALVANIZED SHEET METAL EXPANSION JOINT. INSTALL DRIVE ON CLEAT OR STANDING SEAM AT JOINTS. FOLD STANDING SEAM CORNERS AT 45°.

NEW 24 GA. GALVANIZED SHEET METAL CLEAT. ANCHOR 24' o.c. FASTENER TO HAVE EPDM OR NEOPRENE WASHER. (REFER TO DETAIL T/A4 FOR STANDARD SHEET METAL ENGAGEMENT REQUIREMENTS). OVERLAP AND SEAL CLEAT JOINTS A MIN. OF 3".

NEW MEMBRANE ROOFING. EXTEND ALL FLIES A MIN. OF 2" ABOVE CANT.

NEW INSULATION AS SPECIFIED

STEEL DECK

NEW CONT. 2X TREATED WOOD BLOCKING (MIN. 5 1/2" WIDTH) HEIGHT TO MATCH INSULATION HEIGHT.

NOTE:
WHEN INSTALLING TREATED WOOD BLOCKING OVER STEEL DECK, INSTALL ICE AND WATER SHIELD, OR EQUIVALENT, BETWEEN PRESSURE TREATED WOOD AND STEEL DECK AND ACCESSORIES.

ROOF EXPANSION JOINT

ROOF TECHNICAL SERVICES, INC.

ROOFTECH

Architects
Engineers
Roof Consultants

1844 HANDLEY DRIVE
FORT WORTH, TX 76112
(817) 456-4631
(817) 423-8256 Metro

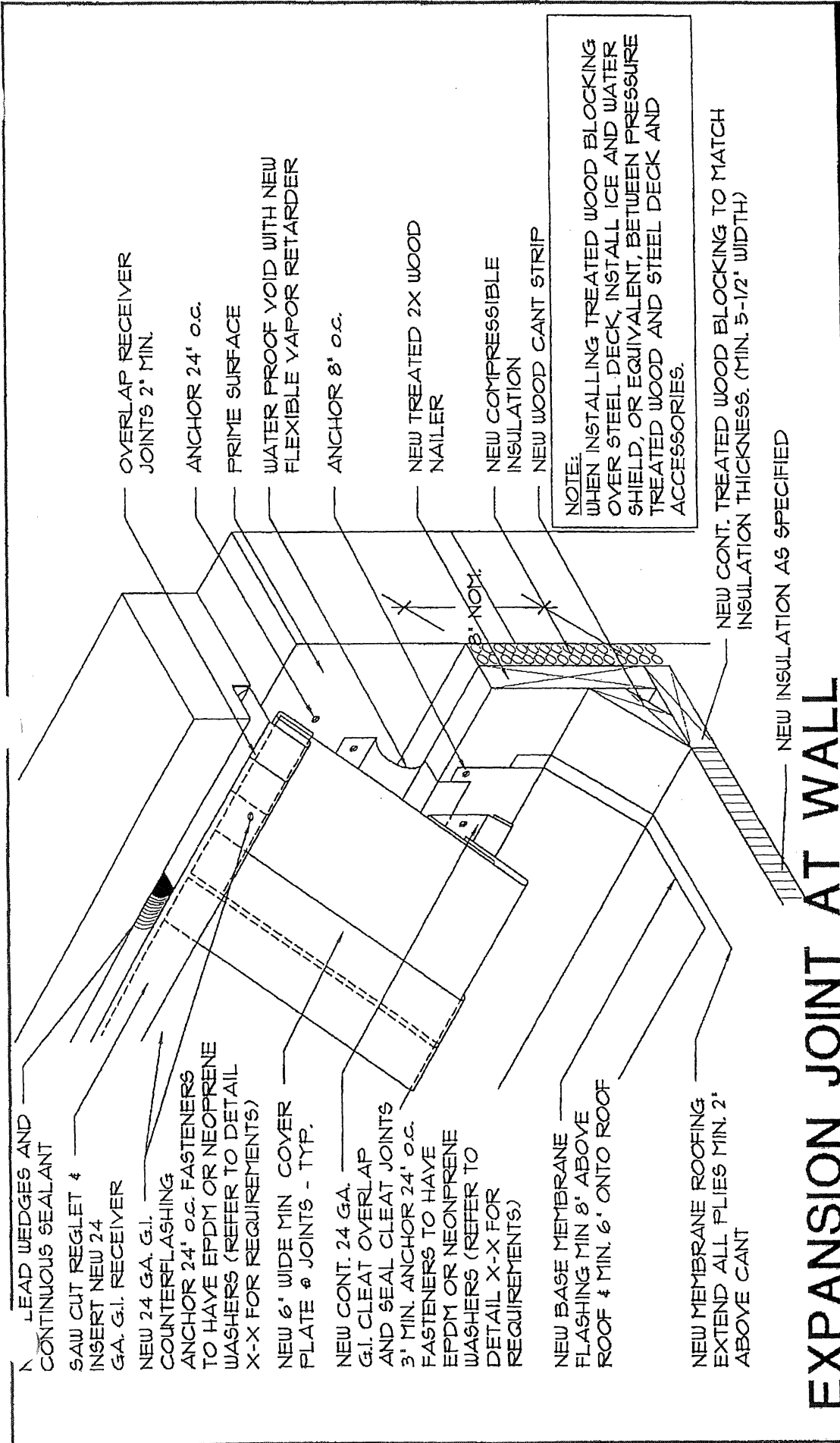
Fax (817) 457-9946

STANDARD DETAILS
TARRANT COUNTY

DRAWN	ML
CHECK	CLC
DATE	02/06/01
SCALE	NTS
JOB NO.	07-001

SHEET:

18



N LEAD WEDGES AND CONTINUOUS SEALANT
 SAW CUT REGLET & INSERT NEW 24 GA. G.I. RECEIVER
 NEW 24 GA. G.I. COUNTERFLASHING
 ANCHOR 24' o.c. FASTENERS TO HAVE EPDM OR NEOPRENE WASHERS (REFER TO DETAIL X-X FOR REQUIREMENTS)
 NEW 6" WIDE MIN COVER PLATE @ JOINTS - TYP.
 NEW CONT. 24 GA. G.I. CLEAT OVERLAP AND SEAL CLEAT JOINTS 3' MIN. ANCHOR 24' o.c. FASTENERS TO HAVE EPDM OR NEOPRENE WASHERS (REFER TO DETAIL X-X FOR REQUIREMENTS)
 NEW BASE MEMBRANE FLASHING MIN 8' ABOVE ROOF & MIN. 6' ONTO ROOF ABOVE CANT
 NEW MEMBRANE ROOFING EXTEND ALL PLYES MIN. 2' ABOVE CANT

OVERLAP RECEIVER JOINTS 2' MIN.
 ANCHOR 24' o.c.
 PRIME SURFACE
 WATER PROOF VOID WITH NEW FLEXIBLE VAPOR RETARDER
 ANCHOR 8' o.c.
 NEW TREATED 2X WOOD NAILER
 NEW COMPRESSIBLE INSULATION
 NEW WOOD CANT STRIP

NOTE:
 WHEN INSTALLING TREATED WOOD BLOCKING OVER STEEL DECK, INSTALL ICE AND WATER SHIELD, OR EQUIVALENT, BETWEEN PRESSURE TREATED WOOD AND STEEL DECK AND ACCESSORIES.

NEW CONT. TREATED WOOD BLOCKING TO MATCH INSULATION THICKNESS. (MIN. 5-1/2" WIDTH)
 NEW INSULATION AS SPECIFIED

EXPANSION JOINT AT WALL

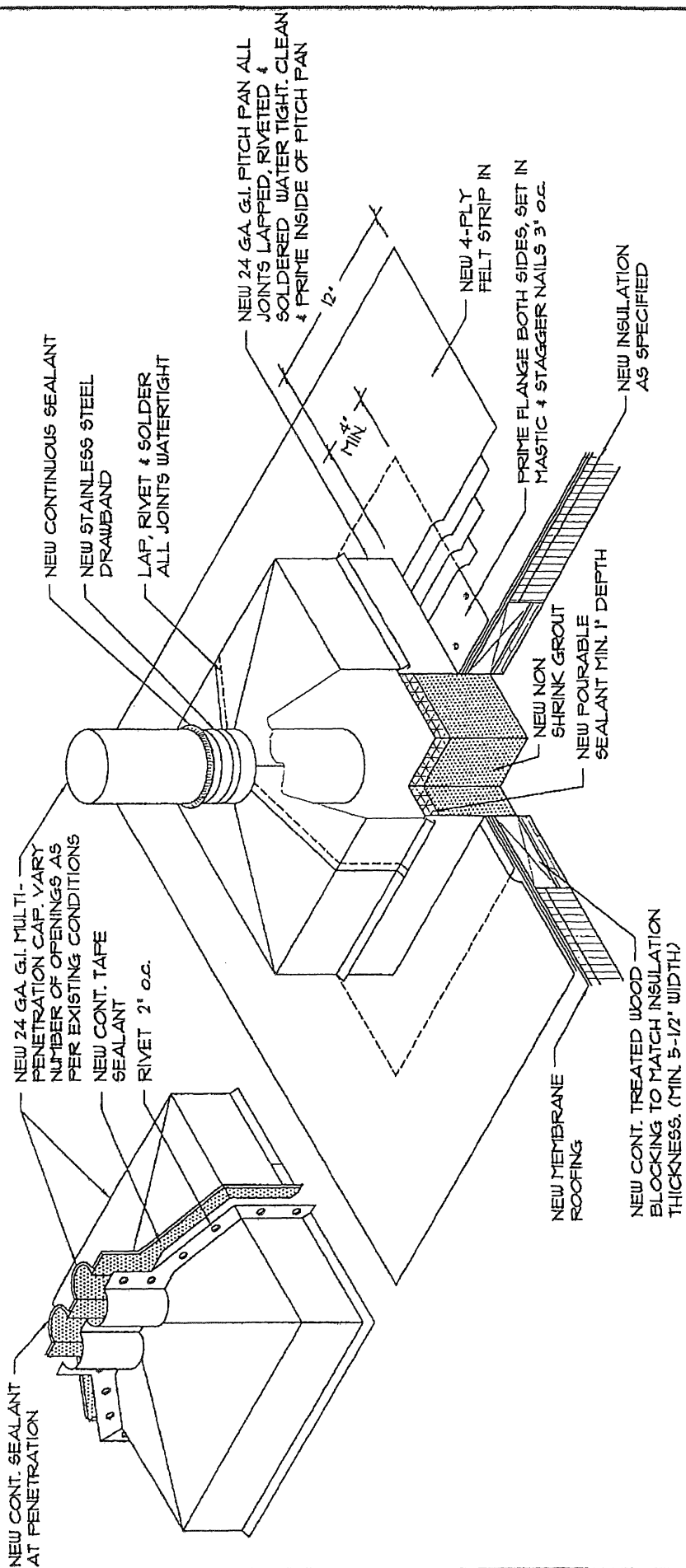
ROOF TECHNICAL SERVICES, INC.
ROOFTECH
 Architects
 Engineers
 Roof Consultants
 Fax (817) 421-9946
 1944 HANDLEY DRIVE
 FORT WORTH, TX 76112
 (817) 496-4631
 (817) 425-8256 Metro

STANDARD DETAILS
 TARRANT COUNTY

DRAWN	ML
CHECK	CLC
DATE	02/06/07
SCALE	NTS
JOB NO.	07-001

SHEET:

19



NOTE:
 WHEN INSTALLING TREATED WOOD BLOCKING OVER STEEL DECK, INSTALL ICE AND WATER SHIELD, OR EQUIVALENT, BETWEEN PRESSURE TREATED WOOD AND STEEL DECK AND ACCESSORIES.

PITCH PAN WITH HOOD

ROOF TECHNICAL SERVICES, INC.
ROOFTeCH
 Architects
 Engineers
 Roof Consultants
 Fax (817) 451-9946

1944 HANDLEY DRIVE
 FORT WORTH, TX 76112
 (817) 456-4631
 (817) 429-8256 Metro

STANDARD DETAILS TARRANT COUNTY

DRAWN	ML
CHECK	CLC
DATE	02/06/07
SCALE	NTS
JOB NO.	07-001

SHEET:

20

NOTE: ALL JOINTS SHALL BE MITERED,
RIVETED & SOLDERED WATERTIGHT

NEW 24 GA. G.I. CAP
(REMOVABLE)

HOOD SLOPED
MIN 1:12

NEW POURABLE
SEALANT IN PITCH
PAN - 1' MIN. DEPTH

NEW MEMBRANE
FLASHING 4 PLY
FELT STRIP - IN

NEW MEMBRANE
ROOFING

NEW INSULATION
AS SPECIFIED

CONT. TREATED WOOD
BLOCKING TO MATCH
INSULATION THICKNESS.
(MIN. 5-1/2" WIDTH)

NEW 22 GA. G.I. PITCH PAN
CLEAN & PRIME INSIDE OF PAN
PRIME FLANGE BOTH SIDES
SET IN MASTIC. FASTEN 3" O.C.

FILL BOTTOM WITH NEW
NON-SHRINK GROUT

NOTE:
WHEN INSTALLING TREATED WOOD BLOCKING
OVER STEEL DECK, INSTALL ICE AND WATER
SHIELD, OR EQUIVALENT, BETWEEN PRESSURE
TREATED WOOD AND STEEL DECK AND
ACCESSORIES.

MULTIPLE PENETRATION FLASHING

ROOF TECHNICAL SERVICES, INC.

ROOFTECH

Architects
Engineers
Roof Consultants

Fax (817) 457-9946

1944 HANDLEY DRIVE
FORT WORTH, TX 76112
(817) 456-4631
(817) 429-8256 Metro

STANDARD DETAILS
TARRANT COUNTY

SHEET:

21

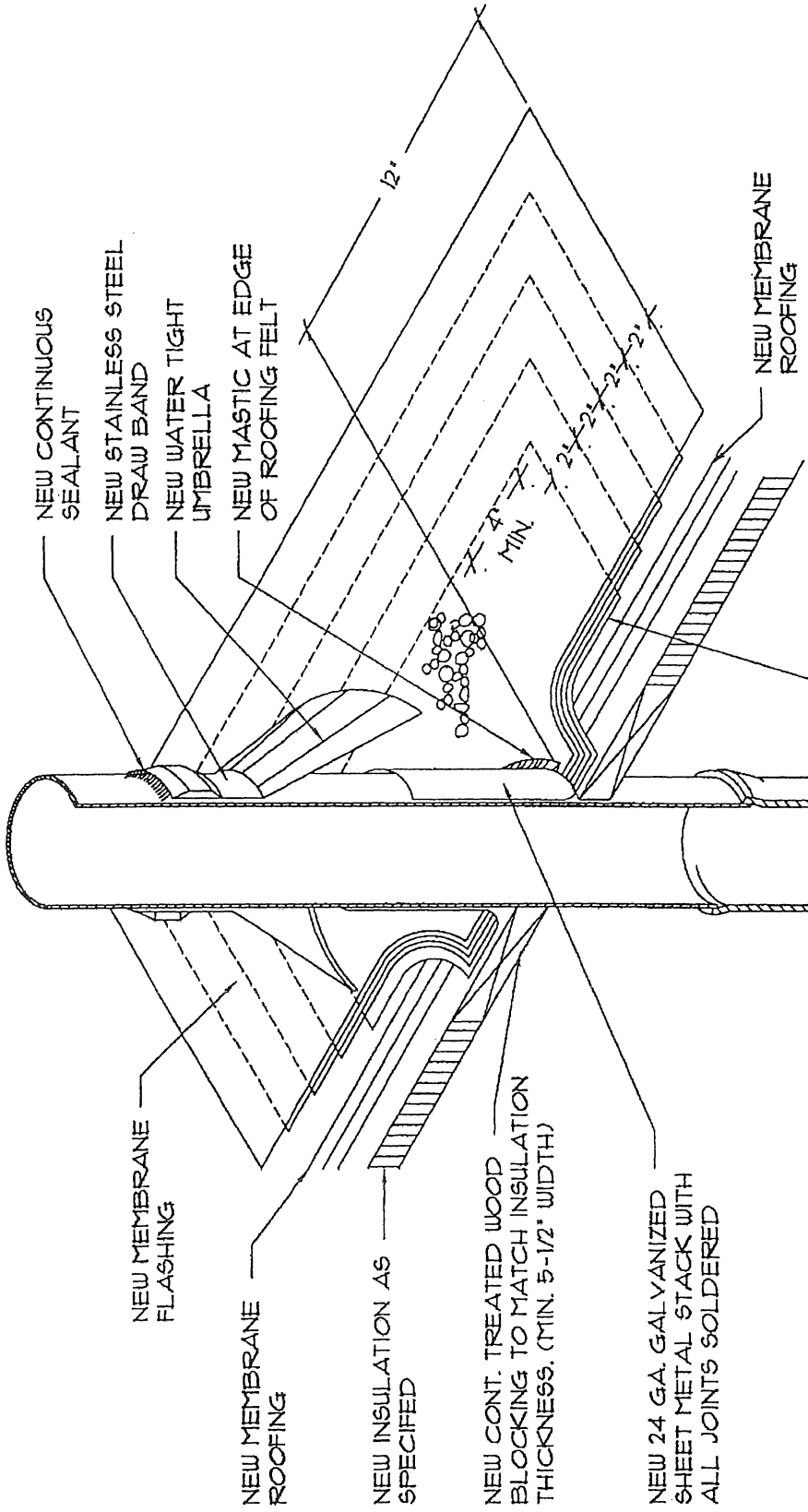
DRAWN ML

CHECK CLC

DATE 02/06/07

SCALE NTS

JOB NO. 07-001



SET FLANGE IN MASTIC STRIP IN WITH
FOUR PLYS OF FELT STAGGER NAILS
AT 3' O.C.- PRIME FLANGE BOTH
SIDES BEFORE STRIPPING

NOTE:
WHEN INSTALLING TREATED WOOD BLOCKING
OVER STEEL DECK, INSTALL ICE AND WATER
SHIELD, OR EQUIVALENT, BETWEEN PRESSURE
TREATED WOOD AND STEEL DECK AND
ACCESSORIES.

MISC. PENETRATION FLASHING

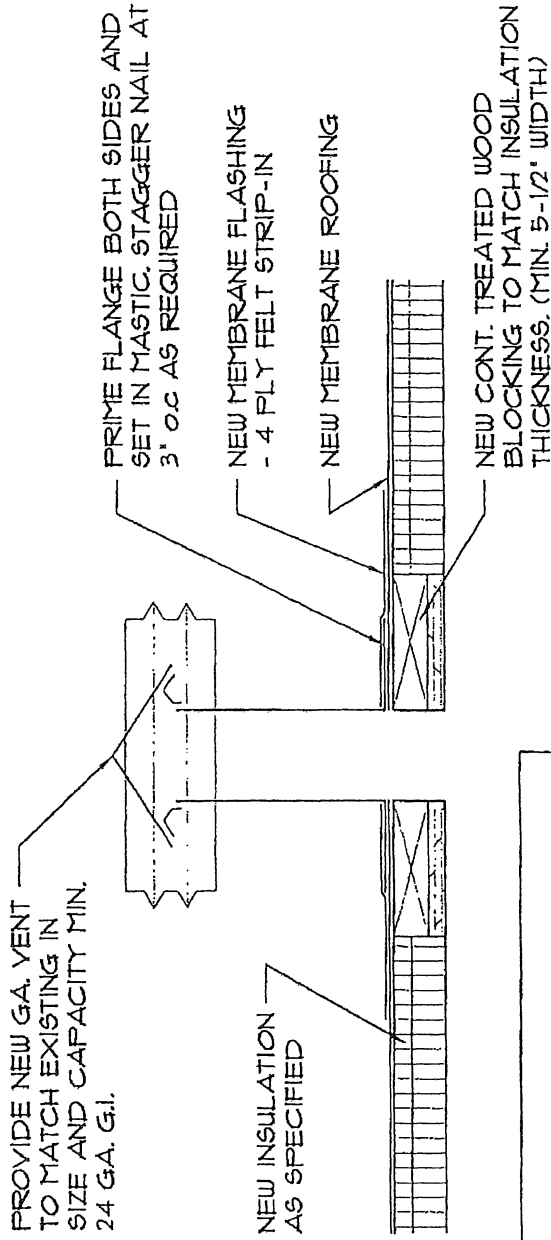
ROOF TECHNICAL SERVICES, INC.
ROOFTTECH
 Architects
 Engineers
 Roof Consultants
 1944 HANDLEY DRIVE
 FORT WORTH, TX 76112
 (817) 496-4631
 (817) 425-8256 Metro
 Fax (817) 451-9546

STANDARD DETAILS
 TARRANT COUNTY

DRAIN	ML
CHECK	CLC
DATE	02/06/07
SCALE	NTS
JOB NO.	07-001

SHEET:

22



NOTE:
 WHEN INSTALLING TREATED WOOD BLOCKING OVER STEEL DECK, INSTALL ICE AND WATER SHIELD, OR EQUIVALENT, BETWEEN PRESSURE TREATED WOOD AND STEEL DECK AND ACCESSORIES.

STANDARD VENT

ROOF TECHNICAL SERVICES, INC.
ROOFTTECH
 Architects
 Engineers
 Roof Consultants
 Fax (817) 457-9946

1944 HANDLEY DRIVE
 FORT WORTH, TX 76112
 (817) 496-4631
 (817) 429-8256 Metro

DRAWN	ML
CHECK	CLC
DATE	02/06/07
SCALE	NTS
JOB NO.	07-001

SHEET:

23

STANDARD DETAILS
 TARRANT COUNTY

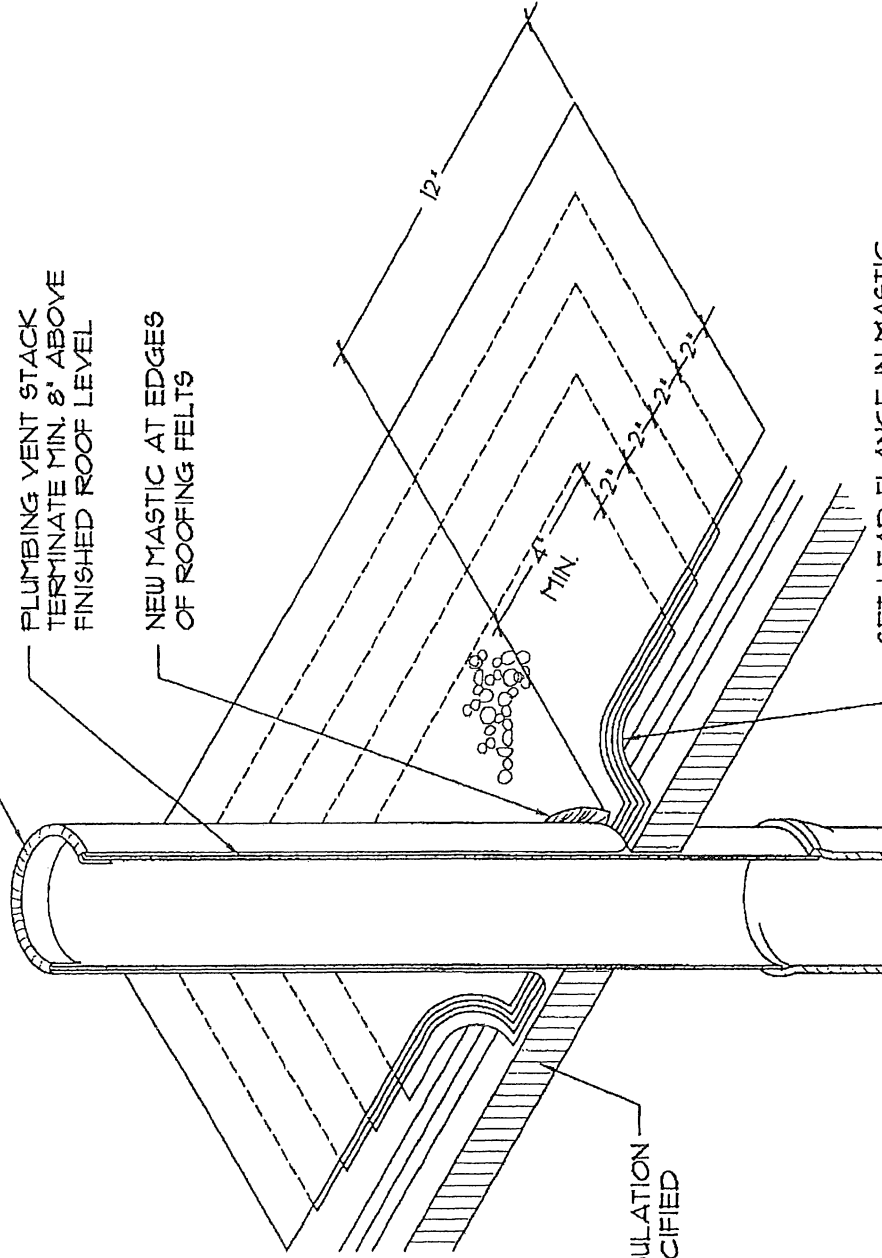
ROLL NEW 4" LEAD FLASHING
MIN. 1' DOWN INTO PIPE

PLUMBING VENT STACK
TERMINATE MIN. 8" ABOVE
FINISHED ROOF LEVEL

NEW MASTIC AT EDGES
OF ROOFING FELTS

NEW INSULATION
AS SPECIFIED

SET LEAD FLANGE IN MASTIC
STRIP IN WITH FOUR PLYS OF
FELT - PRIME FLANGE BOTH
SIDES BEFORE STRIPPING



PLUMBING VENT FLASHING

STANDARD DETAILS
TARRANT COUNTY

ROOF TECHNICAL SERVICES, INC.

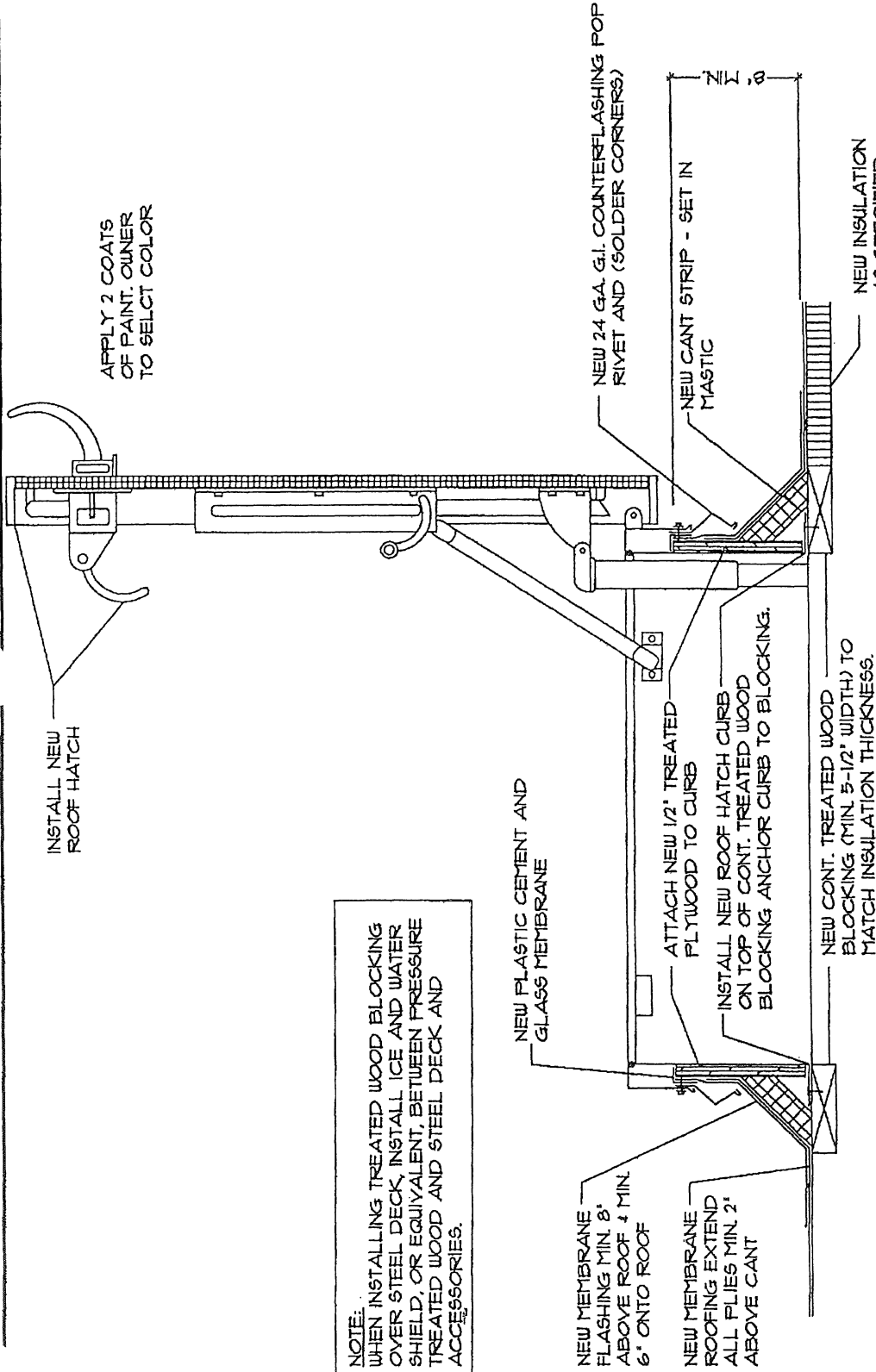
ROOFTeCH

Architects
Engineers
Roof Consultants
1944 HANDLEY DRIVE
FORT WORTH, TX 76112
(817) 456-4631
Fax (817) 457-9946

DRAWN	ML
CHECK	CLC
DATE	02/06/07
SCALE	NTS
JOB NO.	07-001

SHEET:

24



NOTE:
 WHEN INSTALLING TREATED WOOD BLOCKING OVER STEEL DECK, INSTALL ICE AND WATER SHIELD, OR EQUIVALENT, BETWEEN PRESSURE TREATED WOOD AND STEEL DECK AND ACCESSORIES.

ROOF HATCH

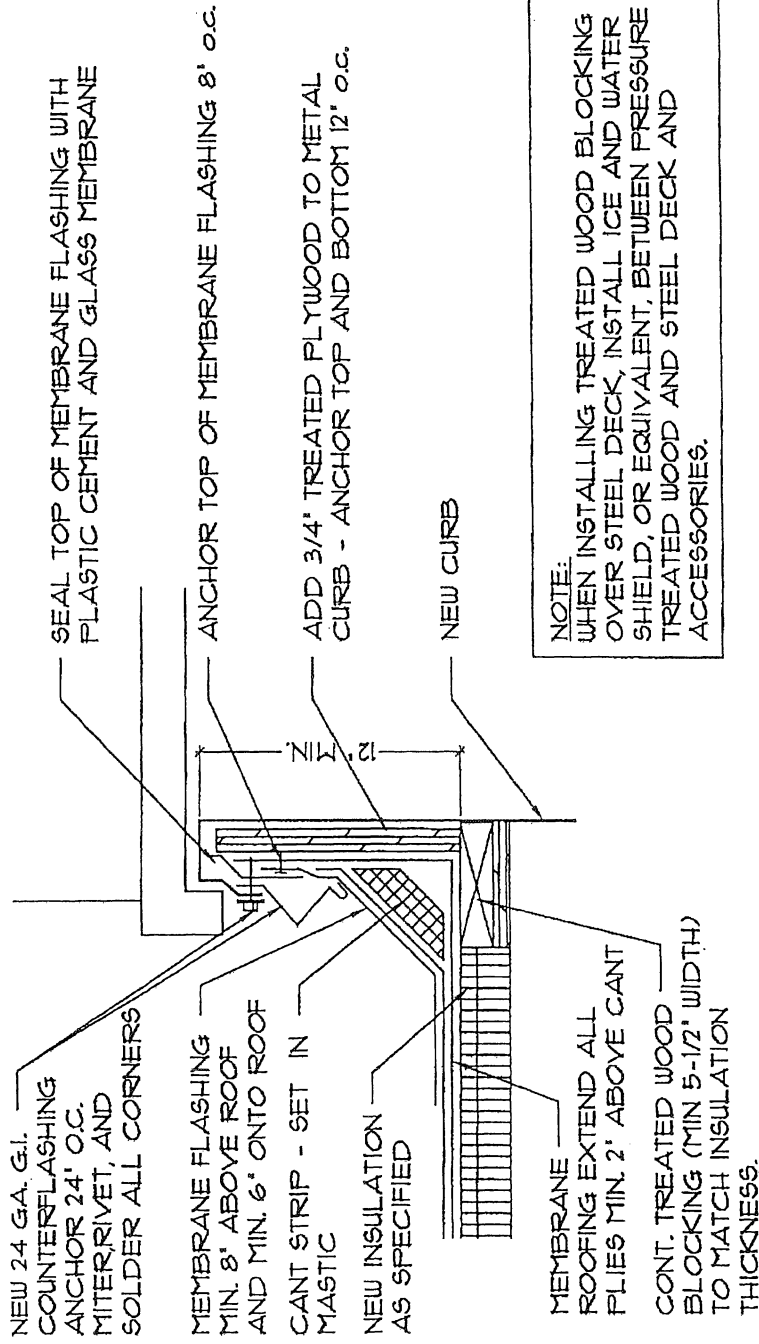
DRAWN	ML
CHECK	CLC
DATE	02/06/07
SCALE	NTS
JOB NO.	07-001

SHEET: **25**

STANDARD DETAILS
 TARRANT COUNTY

ROOF TECHNICAL SERVICES, INC.
ROOFTeCH
 Architects
 Engineers
 Roof Consultants
 Fax (817) 457-9946

1944 HANDLEY DRIVE
 FORT WORTH, TX 76112
 (817) 496-4631
 (817) 429-8256 Metro



NOTE:
 WHEN INSTALLING TREATED WOOD BLOCKING OVER STEEL DECK, INSTALL ICE AND WATER SHIELD, OR EQUIVALENT, BETWEEN PRESSURE TREATED WOOD AND STEEL DECK AND ACCESSORIES.

FACTORY MOUNTED CURBS

ROOF TECHNICAL SERVICES, INC.
ROOFTTECH
 Architects
 Engineers
 Roof Consultants
 Fax (817) 457-9946

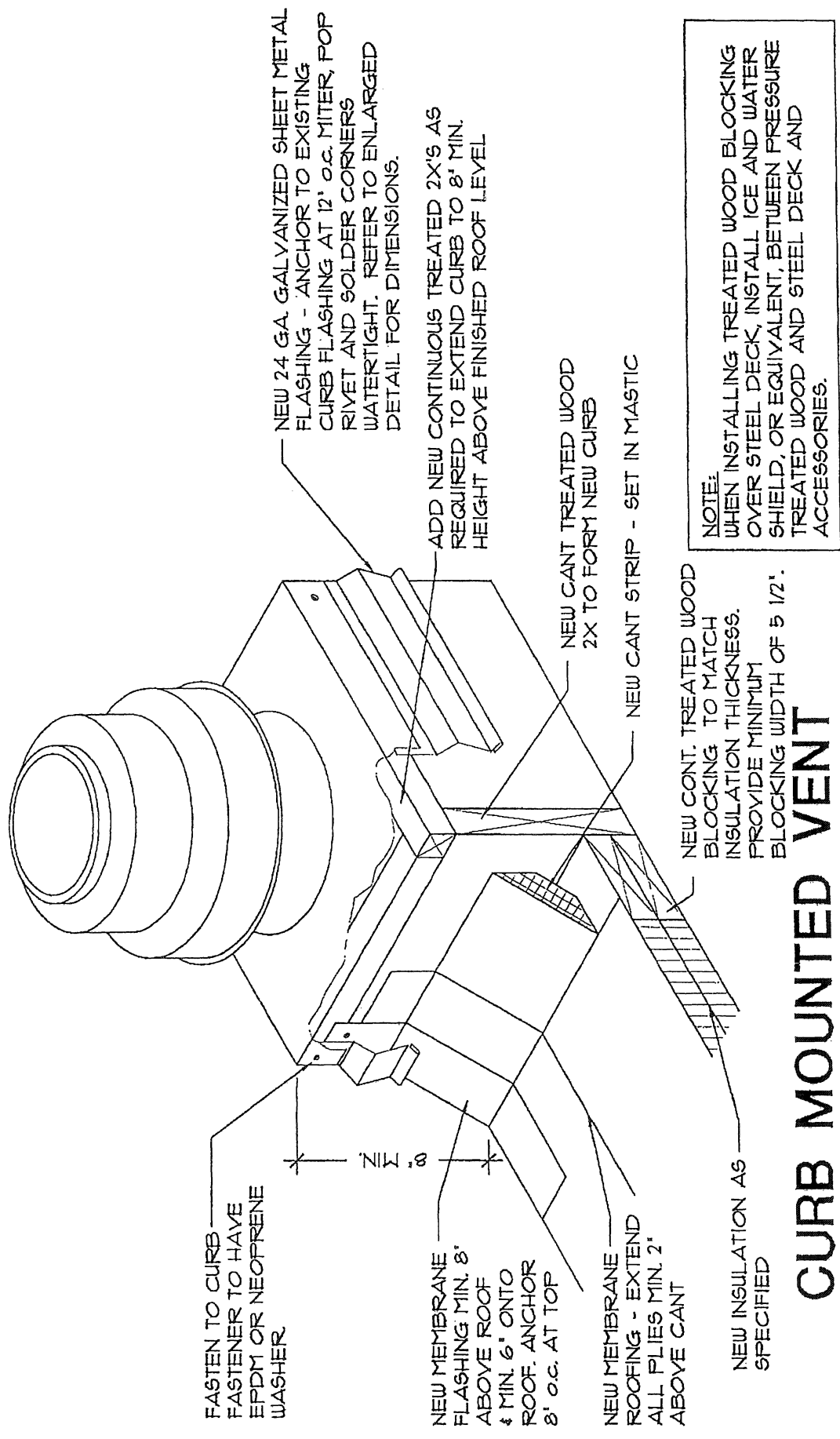
1944 HANDLEY DRIVE
 FORT WORTH, TX 76112
 (817) 496-4631
 (817) 429-8256 Metro

STANDARD DETAILS
 TARRANT COUNTY

SHEET:

26

DRAWN	ML
CHECK	CLC
DATE	02/06/07
SCALE	NTS
JOB NO.	07-001



NOTE:
WHEN INSTALLING TREATED WOOD BLOCKING OVER STEEL DECK, INSTALL ICE AND WATER SHIELD, OR EQUIVALENT, BETWEEN PRESSURE TREATED WOOD AND STEEL DECK AND ACCESSORIES.

CURB MOUNTED VENT

ROOF TECHNICAL SERVICES, INC.
ROOFTTECH
 Architects
 Engineers
 Roof Consultants
 1944 HANDLEY DRIVE
 FORT WORTH, TX 76112
 (817) 496-4631
 (817) 425-8256 Metro
 Fax (817) 451-9946

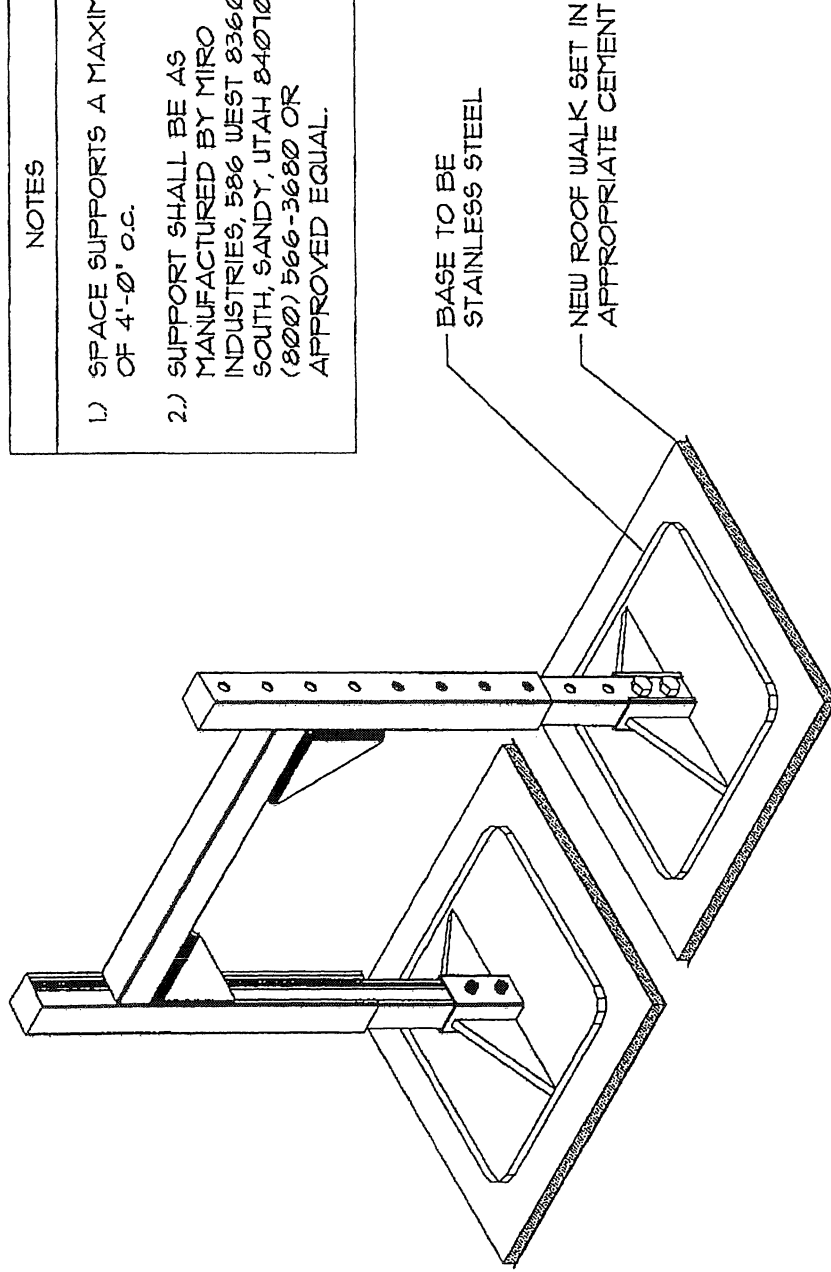
STANDARD DETAILS
 TARRANT COUNTY

DRAWN	ML
CHECK	CLC
DATE	02/06/01
SCALE	NTS
JOB NO.	07-001

SHEET:

27

- NOTES**
- 1.) SPACE SUPPORTS A MAXIMUM OF 4'-0" o.c.
 - 2.) SUPPORT SHALL BE AS MANUFACTURED BY MIRO INDUSTRIES, 586 WEST 8360 SOUTH, SANDY, UTAH 84070, (800) 566-3680 OR APPROVED EQUAL.



PORTABLE DUCT SUPPORT

ROOF TECHNICAL SERVICES, INC.
ROOFTECH
 Architects
 Engineers
 Roof Consultants
 Fax (817) 457-9946

1944 HANDLEY DRIVE
 FORT WORTH, TX. 76112
 (817) 456-4631
 (817) 429-8256 Metro

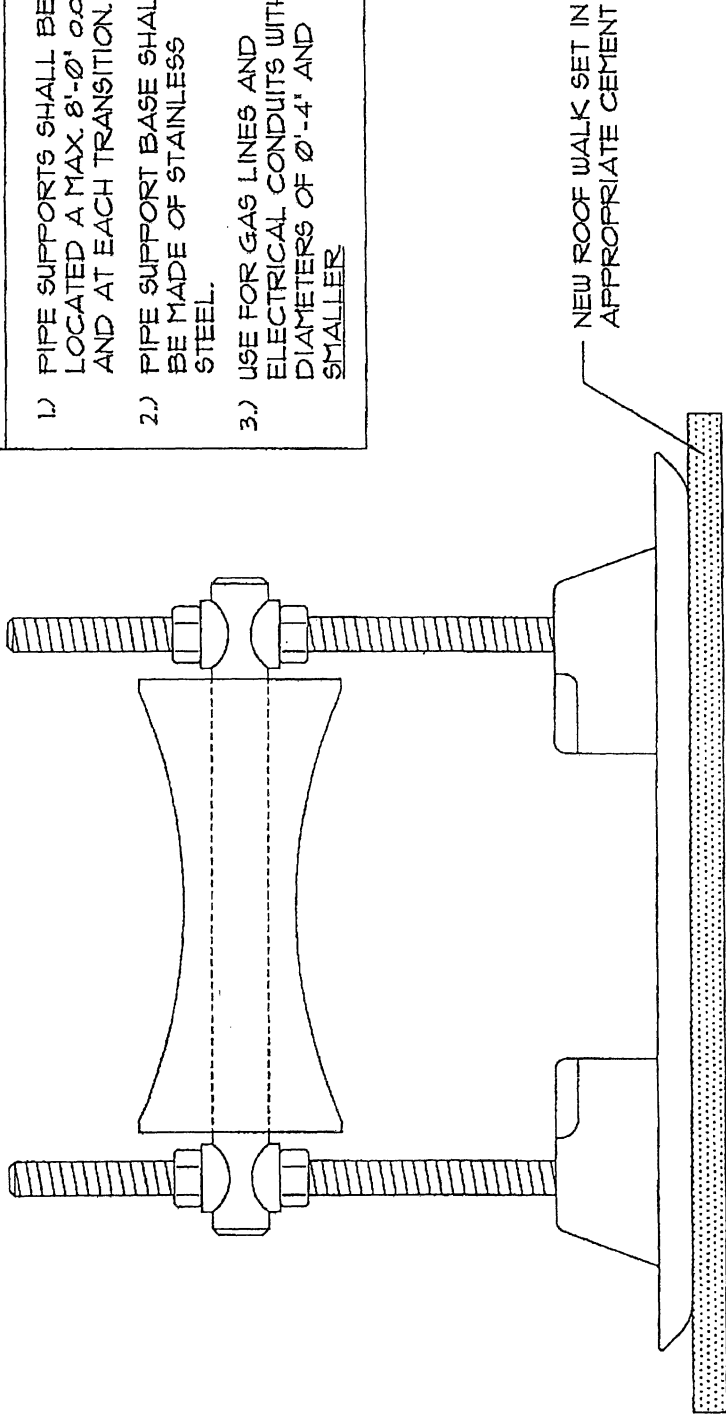
STANDARD DETAILS
 TARRANT COUNTY

DRAWN	ML
CHECK	CLC
DATE	02/06/07
SCALE	NTS
JOB NO.	07-001

SHEET:

28

- NOTES
- 1.) PIPE SUPPORTS SHALL BE LOCATED A MAX. 8'-0" o.c. AND AT EACH TRANSITION.
 - 2.) PIPE SUPPORT BASE SHALL BE MADE OF STAINLESS STEEL.
 - 3.) USE FOR GAS LINES AND ELECTRICAL CONDUITS WITH DIAMETERS OF 0'-4" AND SMALLER.



PIPE SUPPORT

ROOF TECHNICAL SERVICES, INC.
ROOFTeCH
 Architects
 Engineers
 Roof Consultants
 Fax (817) 457-9946

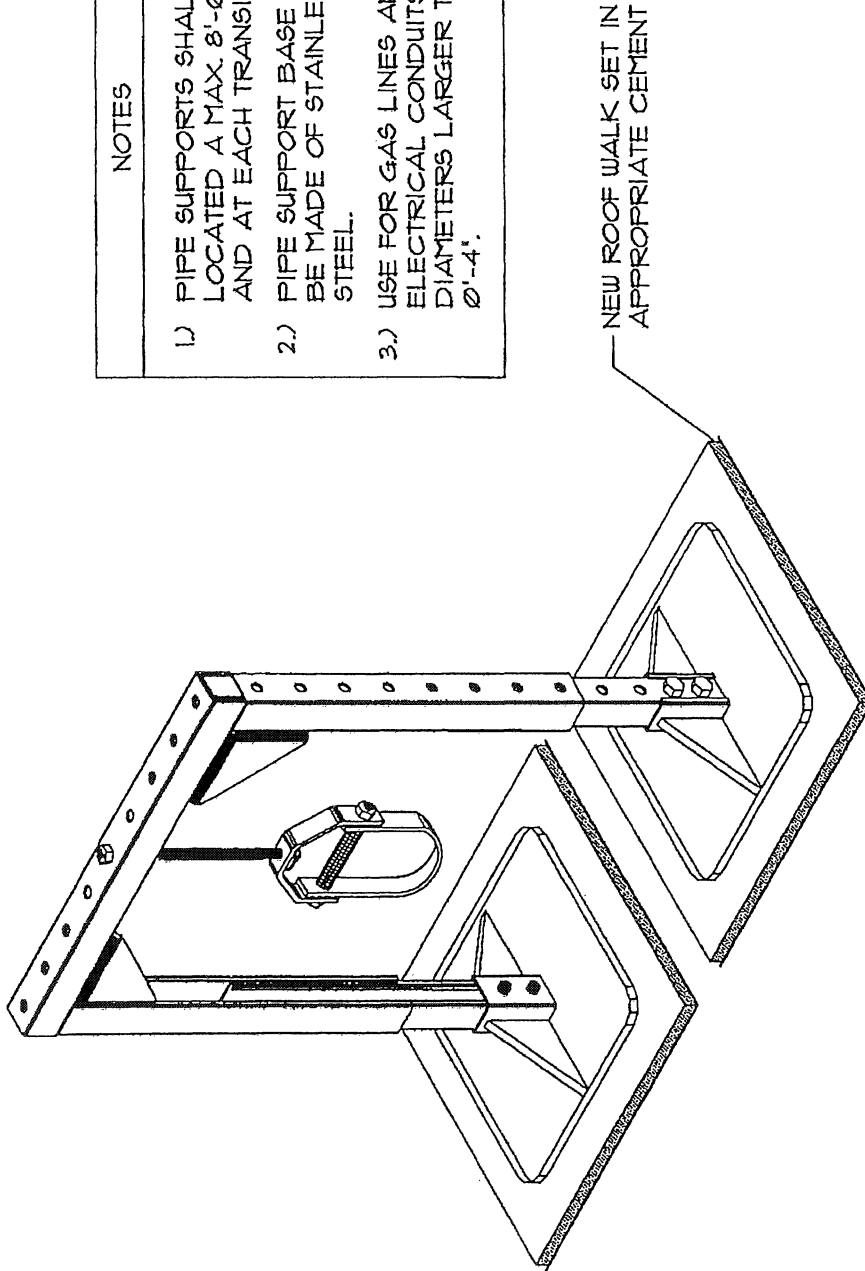
1944 HANDLEY DRIVE
 FORT WORTH, TX 76112
 (817) 496-4631
 (817) 429-8256 Metro

STANDARD DETAILS
 TARRANT COUNTY

DRAWN	ML
CHECK	CLC
DATE	02/06/07
SCALE	NTS
JOB NO.	07-001

SHEET:

29



NOTES

- 1.) PIPE SUPPORTS SHALL BE LOCATED A MAX. 8'-0" O.C. AND AT EACH TRANSITION.
- 2.) PIPE SUPPORT BASE SHALL BE MADE OF STAINLESS STEEL.
- 3.) USE FOR GAS LINES AND ELECTRICAL CONDUITS WITH DIAMETERS LARGER THAN 0'-4".

PIPE SUPPORT

STANDARD DETAILS
TARRANT COUNTY

ROOF TECHNICAL SERVICES, INC.

ROOFTECH

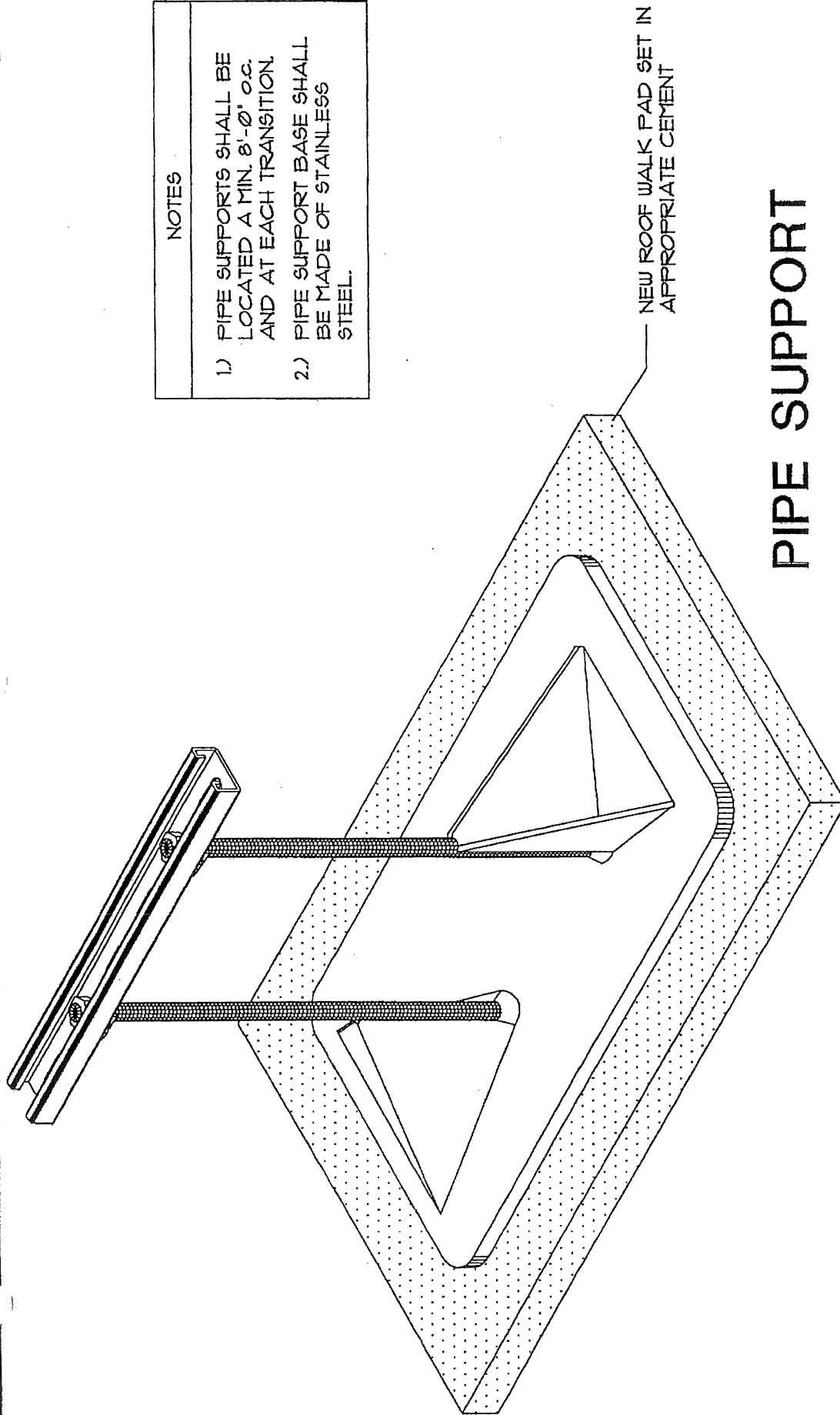
Architects
Engineers
Roof Consultants
Fax (817) 451-9946

1944 HANDLEY DRIVE
FORT WORTH, TX 76112
(817) 496-4631
(817) 423-8256 Metro

SHEET:

30

DRAWN	ML
CHECK	CLC
DATE	02/06/07
SCALE	NTS
JOB NO.	01-001



- NOTES
- 1.) PIPE SUPPORTS SHALL BE LOCATED A MIN. 8'-0" o.c. AND AT EACH TRANSITION.
 - 2.) PIPE SUPPORT BASE SHALL BE MADE OF STAINLESS STEEL.

PIPE SUPPORT

DRAWN	ML
CHECK	CLC
DATE	02/06/07
SCALE	NTS
JOB NO.	07-001

SHEET: **31**

STANDARD DETAILS
TARRANT COUNTY

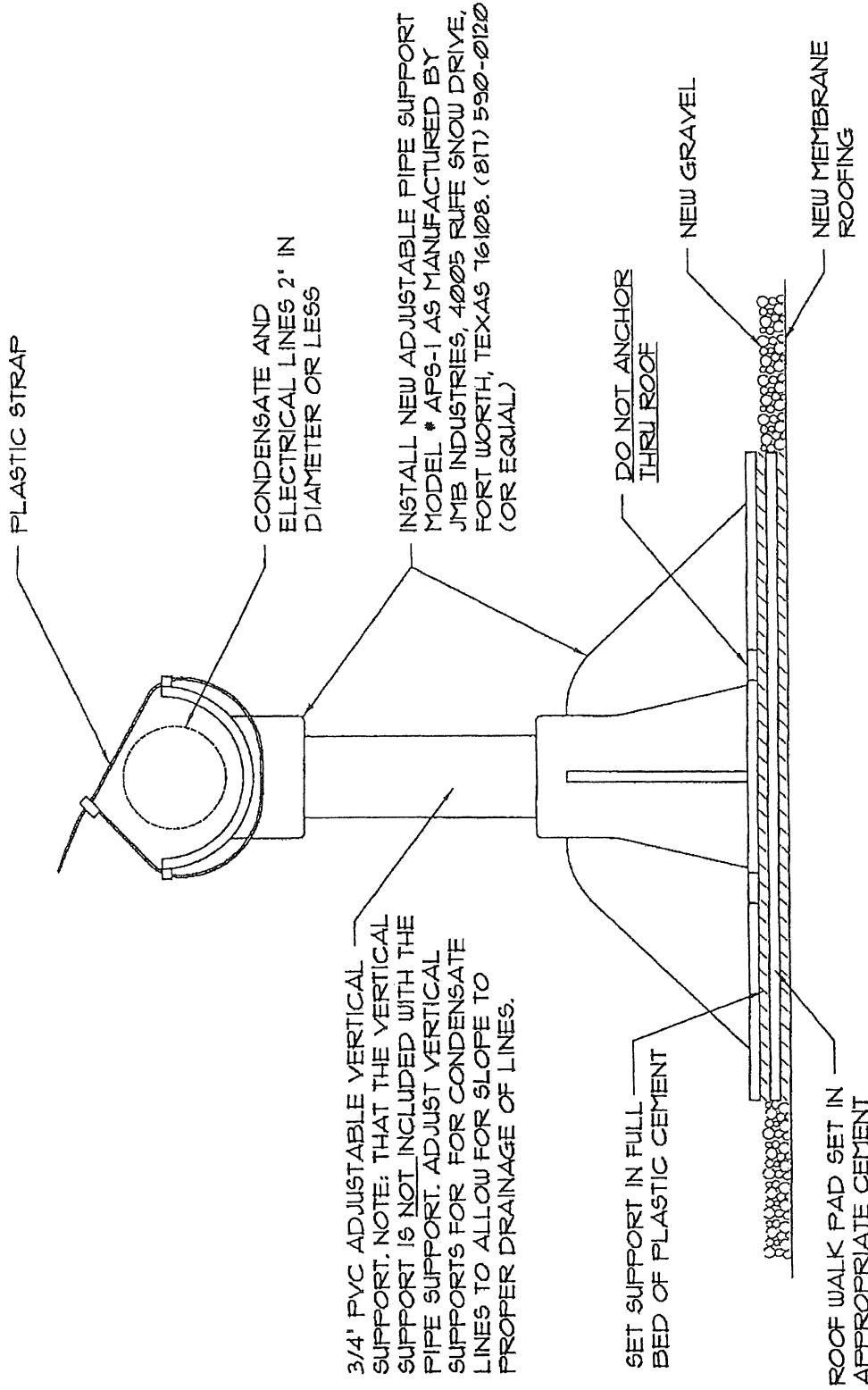
ROOF TECHNICAL SERVICES, INC.

ROOFTTECH

Architects
Engineers
Roof Consultants

1944 HANDLEY DRIVE
FORT WORTH, TX 76112
(817) 496-4631
(817) 429-8256 Metro

Fax (817) 457-9946



CONDENSATE LINE SUPPORT

ROOF TECHNICAL SERVICES, INC.

ROOFTTECH

Architects
Engineers
Roof Consultants
1944 HANDLEY DRIVE
FORT WORTH, TX 76112
(817) 456-4631
Fax (817) 457-9946

STANDARD DETAILS
TARRANT COUNTY

DRAWN	ML
CHECK	CLC
DATE	02/06/07
SCALE	NTS
JOB NO.	07-001

SHEET:
32

INSTALL NEW ADJUSTABLE PIPE SUPPORT MODEL * APS-1 AS MANUFACTURED BY JMB INDUSTRIES, 4005 RUIFE SNOW DRIVE, FORT WORTH, TEXAS 76108. (817) 590-0120 (OR EQUAL)

3/4" PVC ADJUSTABLE VERTICAL SUPPORT. NOTE: THAT THE VERTICAL SUPPORT IS NOT INCLUDED WITH THE PIPE SUPPORT. ADJUST VERTICAL SUPPORTS FOR CONDENSATE LINES TO ALLOW FOR SLOPE TO PROPER DRAINAGE OF LINES.

SET SUPPORT IN FULL BED OF PLASTIC CEMENT

DO NOT ANCHOR THRU ROOF

ROOF WALK PAD SET IN APPROPRIATE CEMENT

NEW MEMBRANE ROOFING

NEW GRAVEL