

The image shows the lower legs and feet of three people walking away from the camera on a highly reflective, polished floor. The scene is backlit by a bright, low sun, creating a strong golden glow and long, dark shadows that stretch across the floor. The overall mood is contemplative and forward-moving.

Tarrant County  
Juvenile Services  
2012 Annual Report

## Table of Contents

Tarrant County Juvenile Board Members .....	1
Tarrant County Juvenile Services: Vision, Mission & Core Values .....	2
Overview of Tarrant County Juvenile Services.....	3
Tarrant County Juvenile Services Continuum of Services .....	4
Tarrant County Juvenile Services: Administration .....	5
Tarrant County Juvenile Services: Residential .....	6
Tarrant County Juvenile Services: Educational Services .....	7
Tarrant County Juvenile Services: Probation Services .....	8
Overview .....	9
Court Services .....	10
Referrals to Tarrant County Juvenile Services .....	11
Formal Referrals to Tarrant County Juvenile Services .....	11
Formalized Referral Trends 2008 to 2012 .....	13
Referral Trends 2000 to 2012 .....	14
Referral Demographic Information.....	15
Drug Offenses: 2003-2012 .....	16
Drug Testing .....	16
Supervision Average Daily Population .....	17
Average Caseload by Unit .....	17
Demographics of Youth Placed on Court-Ordered Probation .....	17
Demographics of Youth Placed on Deferred Prosecution Probation .....	19
Specialized Caseloads .....	21
Community Service & Restitution Project .....	21
Victim's Assistance Unit .....	22
Community Programs .....	23
Lynn W. Ross Juvenile Detention Center .....	24
Demographics of Admitted Youth .....	24
Juvenile Justice Alternative Education Program .....	26
Tarrant County Juvenile Services Source of Funds: Fiscal Year 2012 .....	29

## **Tarrant County Juvenile Board Members**

Honorable Nancy Berger - 322nd District Court  
Honorable Wade Birdwell - 342nd District Court  
Honorable Jean Boyd - 323rd District Court - Tarrant County Juvenile Judge  
Honorable Robb Catalano - Criminal District Court No. 3  
Honorable Randy Catterton - 231st District Court  
Honorable John Chupp - 141st District Court  
Honorable Don Cosby - 67th District Court  
Honorable Ken Curry - 153rd District Court  
Honorable David Evans - 48th District Court  
Honorable George Gallagher - 396th District Court – Juvenile Board Chairman  
Honorable Ruben Gonzalez, Jr. - 432nd District Court  
Honorable William Harris - 233rd District Court  
Honorable Jerome Hennigan - 324th District Court  
Honorable Tom Lowe III - 236th District Court  
Honorable Wayne Salvant - Criminal District Court No. 2  
Honorable Michael Sinha - 360th District Court  
Honorable Louis E. Sturns - 213th District Court  
Honorable Bonnie Sudderth - 352nd District Court  
Honorable Mike Thomas - Criminal District Court No. 4  
Honorable R.H. Wallace - 96th District Court  
Honorable Judith Wells – 325<sup>th</sup> District Court  
Honorable Mollee Westfall - 371st District Court  
Honorable Glen Whitley - Tarrant County Judge  
Honorable Melody Wilkinson - 17th District Court  
Honorable Sharen Wilson - Criminal District Court No. 1  
Honorable Scott Wisch - 372nd District Court  
Honorable Dana Womack - 348th District Court  
Honorable Everett Young - 297th District Court

## Tarrant County Juvenile Services: Vision, Mission & Core Values

# TARRANT COUNTY JUVENILE SERVICES

### Vision

A safe and healthy quality of life for our communities

### Mission

To operate a justice organization that supports victim rights and community safety while fostering productive, responsible behavior for youth and families.

### Core Values

**A**

**APPLICATION OF RESTORATIVE JUSTICE:** We provide fair and responsive treatment for victims of juvenile crime in a manner that affirms victims experience while addressing offender rehabilitation

**S**

**SERVICE TO THE COURT:** We serve the Court and execute its orders in a partnership involving the youth, family, probation officer, victim, and community;

**P**

**PARTNERSHIPS:** We partner with families, communities, and organizations to seek solutions to juvenile crime;

**I**

**INDIVIDUAL STRENGTH-FOCUSED APPROACH:** We implement probation strategies which support a youth's successful functioning in the community as well as personal accountability for injury caused; assist youth to recognize their value and identify personal strengths through interventions which build assets and increase capabilities; and help families support their children in overcoming barriers to growth and responsible behavior;

**R**

**RESPECT:** We act with sensitivity to racial, ethnic, cultural, familial, and offense diversity; provide services in a professional and ethical manner; and demonstrate appreciation and respect for all employees, recognizing that our mission is more important than role distinctions;

**E**

**EXCELLENCE:** We strive for excellence in service delivery by implementing evidence-based practices that are creative, flexible, innovative, technologically refined, and measured.



## Overview of Tarrant County Juvenile Services



Services are provided to juveniles under the authority of the Tarrant County Juvenile Board, which has designated the 323rd State District Court to serve as the Juvenile Court. The current presiding judge of the Juvenile Court is Judge Jean Boyd. Three associate judges assist Judge Boyd: Judge Tim Menikos, Judge Ellen Smith and Judge Kim Brown.

By statute, Tarrant County Juvenile Services is the agency designated to receive law enforcement reports of law violations defined either as delinquent conduct or conduct indicating a need for supervision allegedly committed by juveniles (children ages 10 through 16).

Delinquent conduct includes Class A & B misdemeanors as well as felony-grade offenses. Conduct indicating a need for supervision includes Class C misdemeanors transferred from a justice or municipal court and include public intoxication, truancy, running away, inhalant abuse, and violation of school disciplinary codes that result in expulsion.

Services performed include screening and diversion of cases to community resources, presenting objective reports to the court for use at disposition, executing court-ordered treatment and supervision, administering community corrections programs, securing alternative placement and administering collection of court-ordered probation fees and Tarrant County Juvenile Services has developed programs and operations with the goal of diverting youth from the juvenile justice system at the earliest appropriate point. The Juvenile Court endorses this belief by striving to identify the least restrictive environment for the care and rehabilitation of children while assuring community safety. To this end, Tarrant County Juvenile Services has developed a range of community and home-based programs as additional options in solving the problem of juvenile crime. Juvenile Services has the ability to offer a diverse continuum of services to youth and families of Tarrant County.

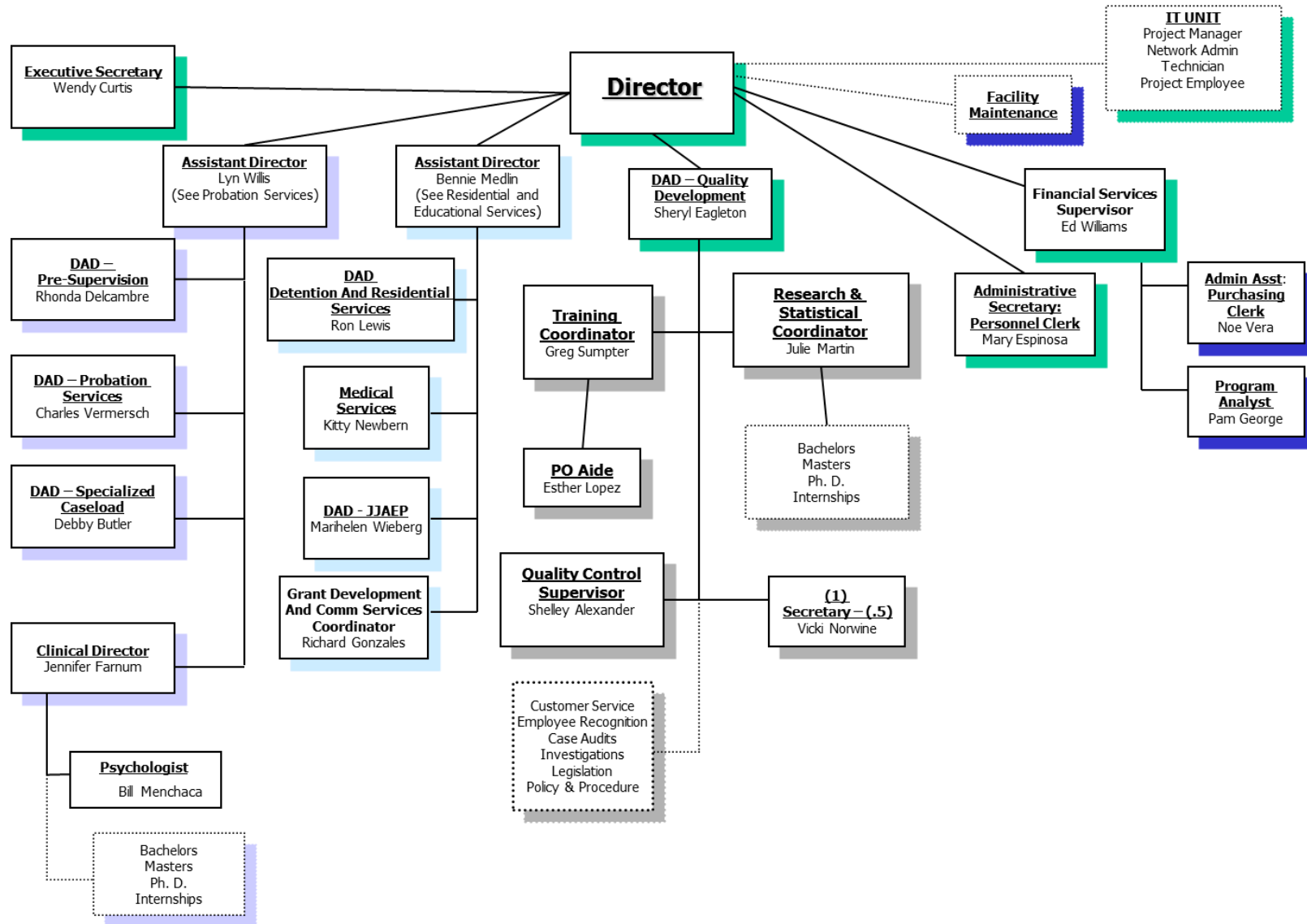
Tarrant County Juvenile Services operates the Juvenile Detention Center, which is a twenty-four hour secure facility for the temporary detention of juveniles for serious law violations. The goal of the center is to provide supervision, activities and counseling that will benefit each child during his stay. Services provided include educational, medical, recreational and life skills training as well as daily written observations of each child for use by the court.

2701 Kimbo Road Fort Worth, Texas 76111 817.838.4600  
<http://www.tarrantcounty.com/eJuvenile/site/default.asp>

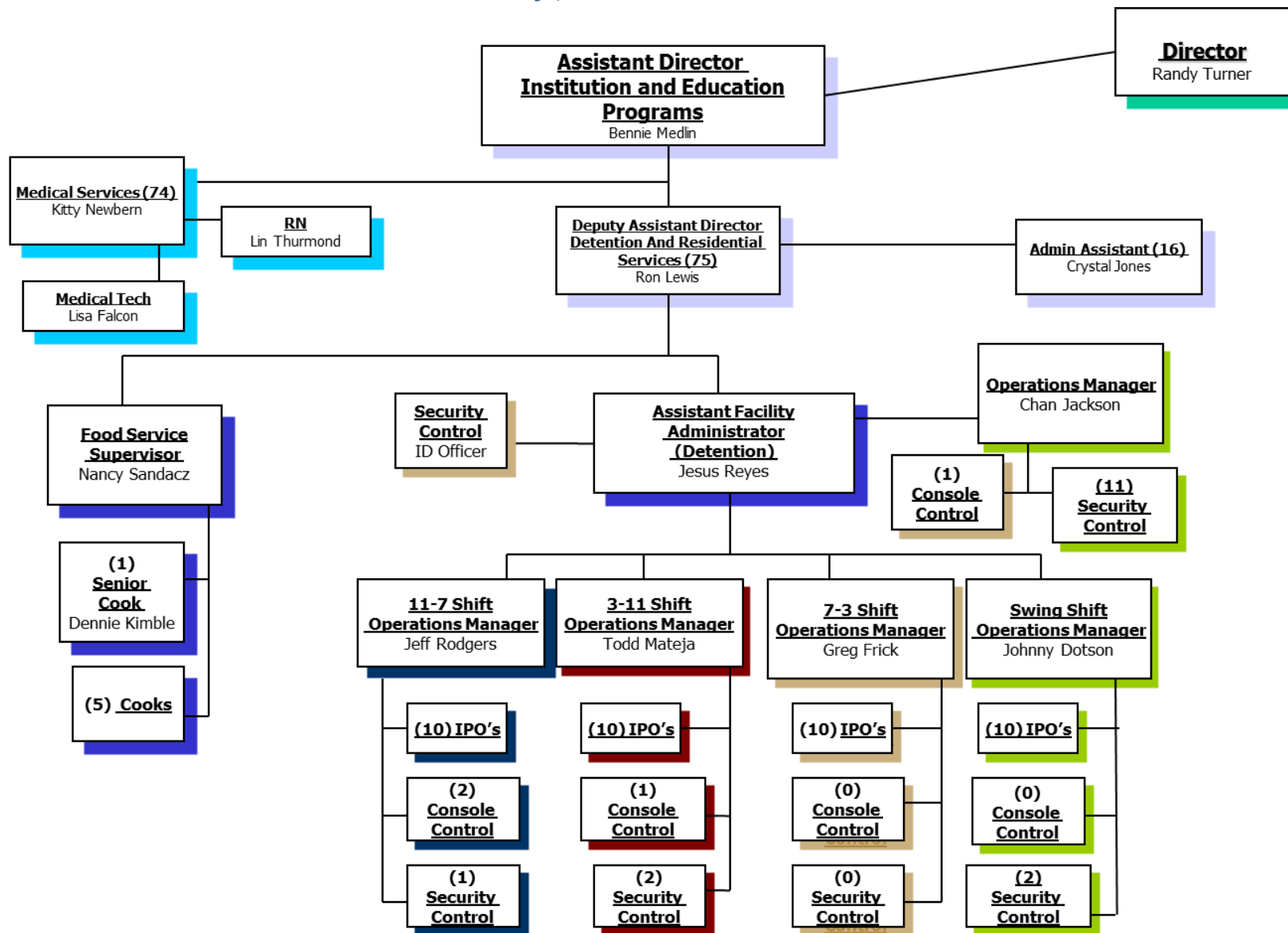
# Tarrant County Juvenile Services Continuum of Services



## Tarrant County Juvenile Services: Administration

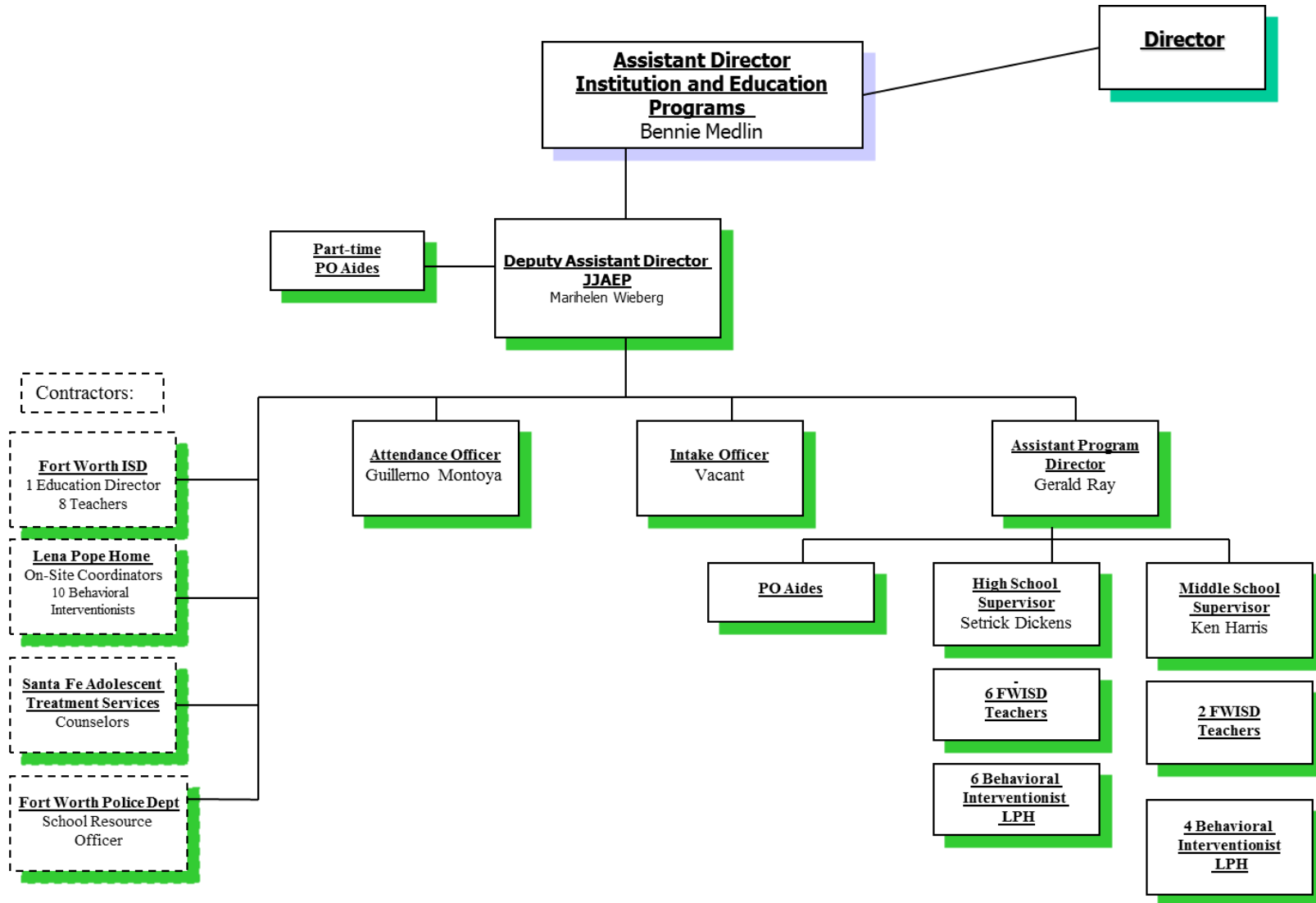


## Tarrant County Juvenile Services: Residential

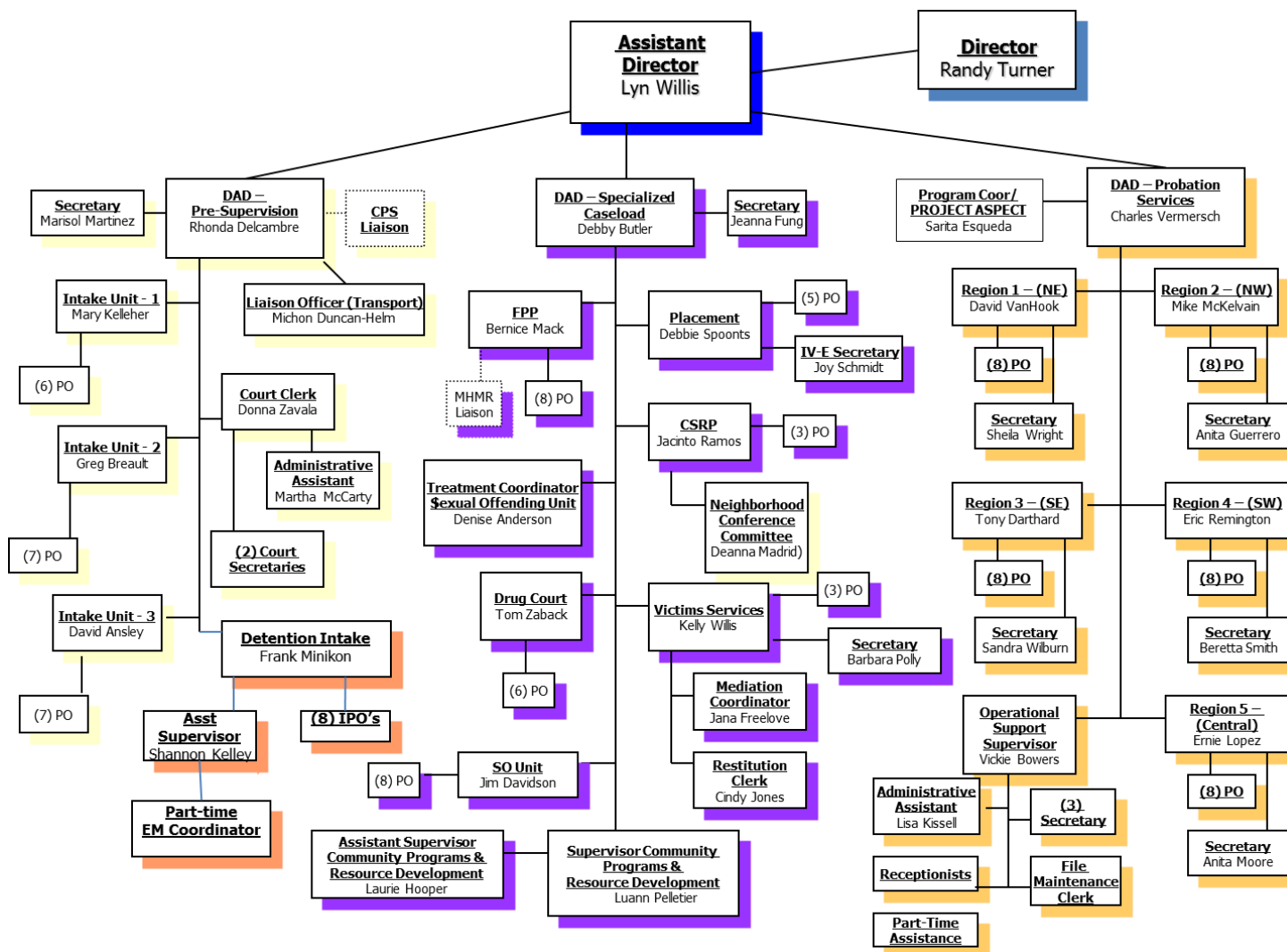




## Tarrant County Juvenile Services: Educational Services



## Tarrant County Juvenile Services: Probation Services



## Overview

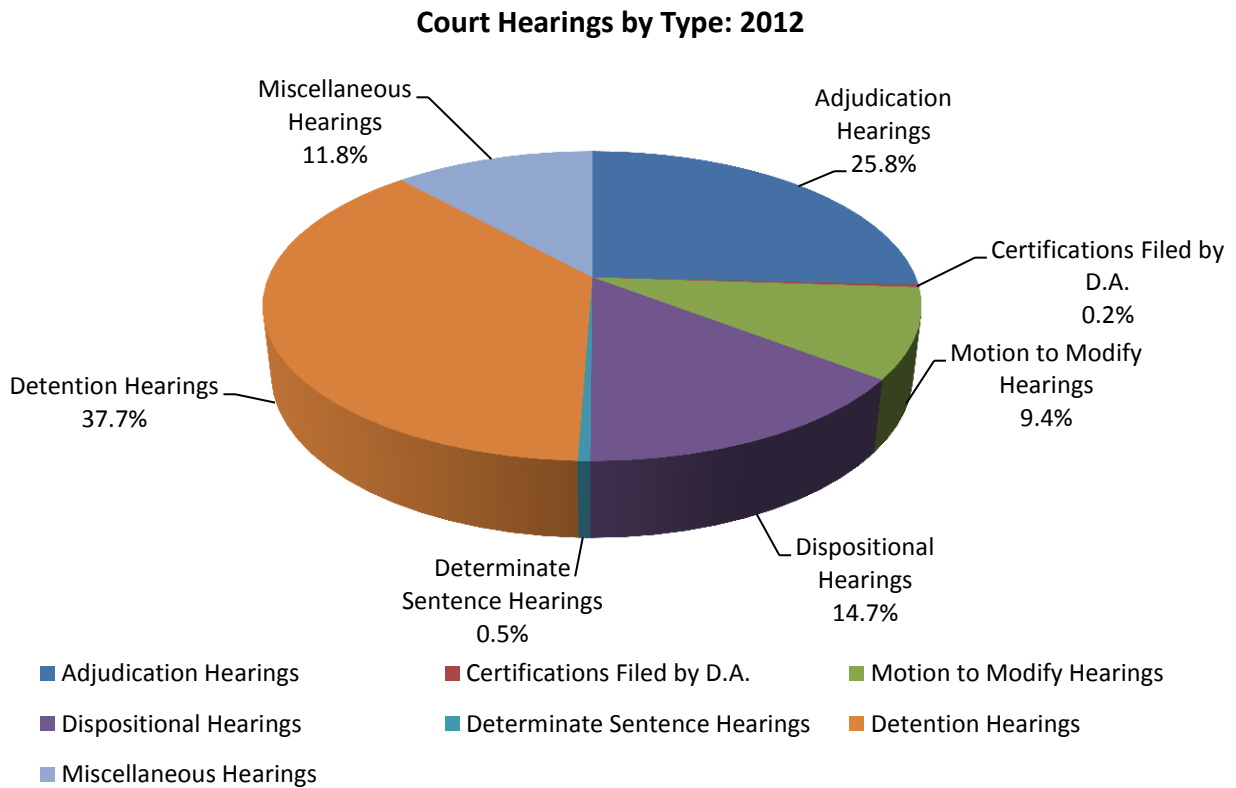
Total Number of Formal Referrals	4148
Total Number of Children Referred	2837
Referral Rate per 1,000 Juvenile Population Aged 10-16 (199,062) <sup>1</sup>	20.8
Total Number of Adjudications	800
Percent of Referrals resulting in an Adjudication	19.3%
Total Number of Adjudicated Youth	690
Total Number of Referrals w/ Court-Ordered Probation Dispositions	694
Total Number of Youth Placed on Court-Ordered Probation	623
Probation Rate per 100 Adjudications	86.75
Percent of Referrals resulting in Court-Ordered Probation	16.7%
Total Number of Deferred Prosecution Probation Dispositions	544
Total Number of Youth Placed on Deferred Prosecution Probation	534
Percent of Referrals placed on Deferred Prosecution Probation	13.1%
Total Number of Modifications	339
Percent of Referrals resulting in Modification	8.2%
Total Number of Texas Youth Commission Commitments	55
Total Number of Certifications	5

---

<sup>1</sup> Population projection based on 0.5 migration scenario as provided by the Texas State Demographer.

## Court Services

<b>ADJUDICATION HEARINGS CONVENED:</b>	1431
<b>DISPOSITIONAL HEARINGS:</b>	814
<b>MOTION TO MODIFY HEARINGS:</b>	520
<b>OTHER HEARINGS:</b>	
Detention Hearings	2089
Determinate Sentencing Hearings	28
Granted (16)	
Certifications filed by D.A.	13
Granted (5)	
Miscellaneous Hearings	652
<b>Total Hearings</b>	<b>5547</b>



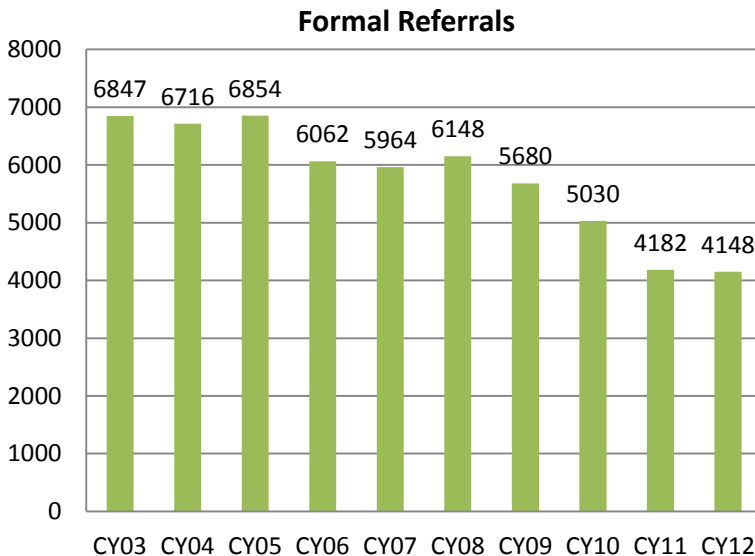
## Referrals to Tarrant County Juvenile Services

A referral occurs when a youth is brought to the department’s attention for alleged delinquent behavior (including both felony and misdemeanor referrals), violation of probation, or conduct indicating a need for supervision (CINS offense).

Referral Type	Frequency	Percentage
<b>Formal Referrals</b>		
Formalized	<b>2670</b>	<b>64.4%</b>
Paper Formalized	<b>1478</b>	<b>35.6%</b>
Total Formal Referrals	<b>4148</b>	<b>100.0%</b>
<b>Other Referrals</b>		
Interim/Interstate	<b>134</b>	
Contract Detention	<b>10</b>	
Other Administrative	<b>96</b>	
Paper Referrals Disposed as Paper	<b>314</b>	

## Formal Referrals to Tarrant County Juvenile Services

A referral is considered a formal referral when a face-to-face contact occurs between the youth and this department. The following figures reflect the total number of referrals and referral trends from 2003 through 2012.

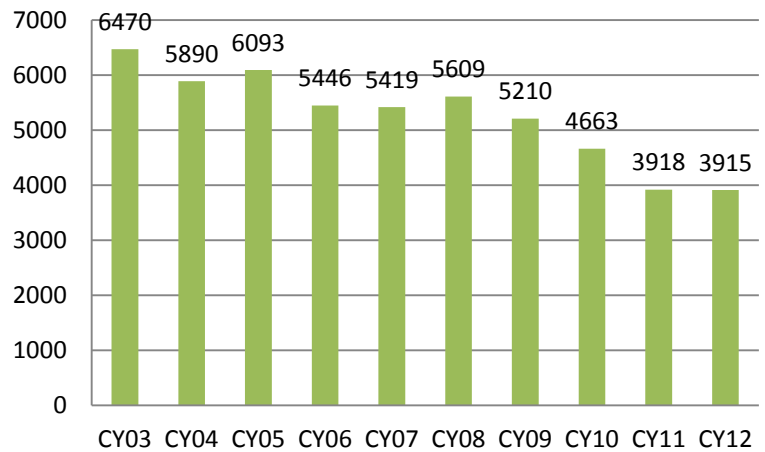


- The total number of formal referrals decreased by 39.4% from 2003 to 2012.
- In the last five years (2008-2012), the total number of formal referrals decreased by 32.5%.
- From 2011 to 2012, the total number of formal referrals decreased by <1%.

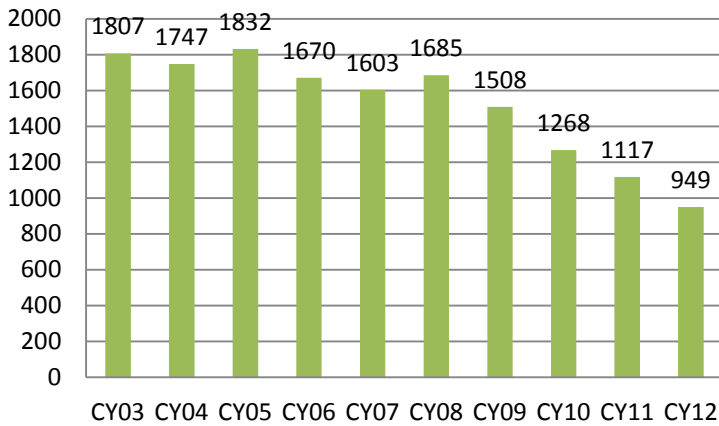


- Delinquent Referrals include all referrals for felonies, class A & B misdemeanors and violations of probation.
- The total number of delinquent referrals decreased by 39.5% from 2003 to 2012.
- In the last five years (2008-2012), the total number of delinquent referrals decreased by 30.2%.
- From 2011 to 2012, the total number of delinquent referrals decreased by <1%.

### Total Delinquent Referrals



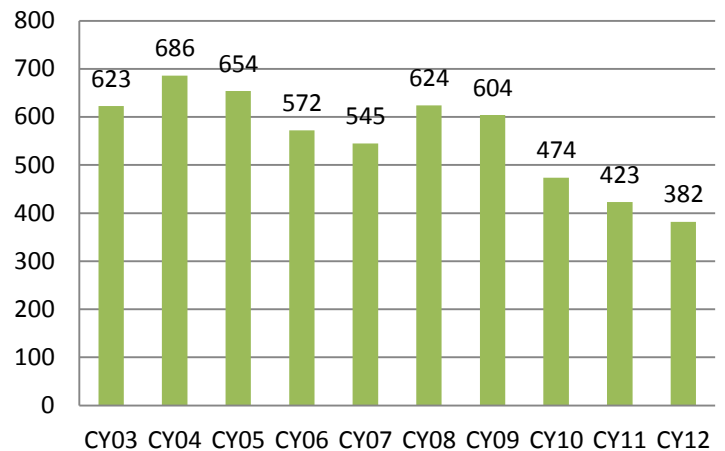
### Felony Referrals



- The total number of felony referrals decreased by 47.5% from 2003 to 2012.
- In the last five years (2008-2012), the total number of felony referrals decreased by 43.7%.
- From 2011 to 2012, the total number of felony referrals decreased by 15.0%.

- Violent felony referrals include the following offense categories: homicide, attempted homicide, sexual assault, robbery, aggravated assault.
- The total number of violent felony referrals decreased by 38.7% from 2003 to 2012.
- In the last five years (2008-2012) the total number of violent referrals has decreased by 38.8%.
- From 2011 to 2012, the total number of violent referrals has decreased by 9.7%.

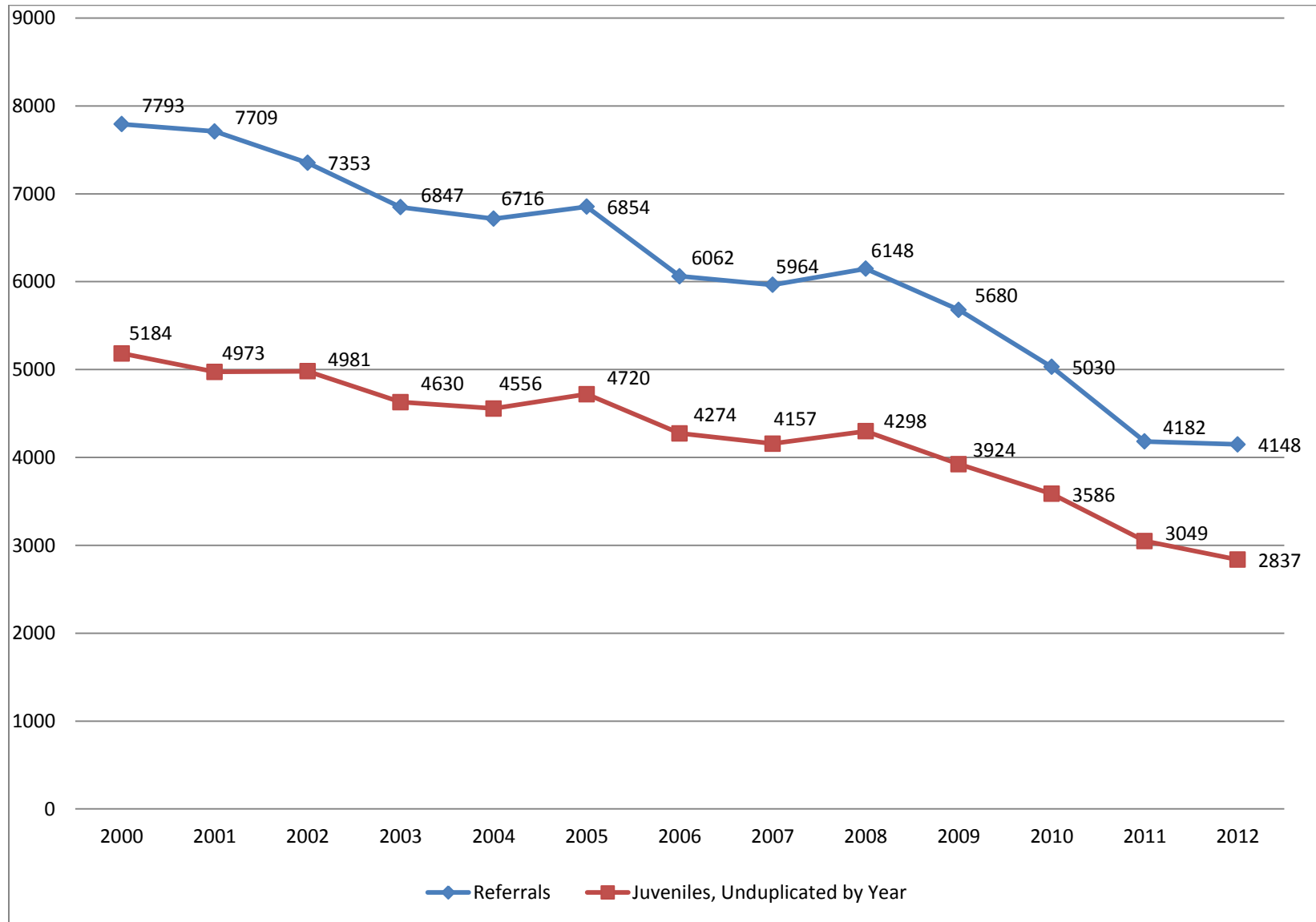
### Violent Felony Referrals



## Formalized Referral Trends 2008 to 2012

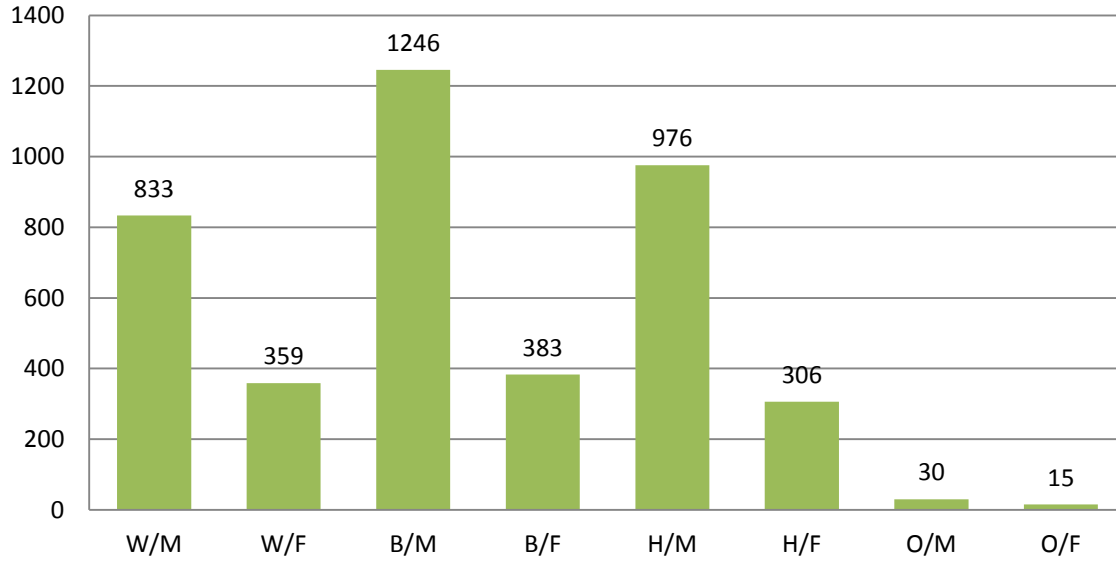
Felonies	2008	2009	2010	2011	2012	# Change 2011-2012	% Change 2011-2012
<b>Violent Referrals</b>							
Homicide	10	6	4	9	4	-5	56%(-)
Attempted Homicide	1	1	1	0	0	0	-
Sexual Assault, related	139	123	91	82	114	32	39%(+)
Robbery	153	141	101	68	68	0	-
Aggravated Assault	317	324	276	261	194	-67	26%(-)
Other Violent	4	9	1	3	2	-1	33%(-)
<b>Total Violent Referrals</b>	<b>624</b>	<b>604</b>	<b>474</b>	<b>423</b>	<b>382</b>	<b>-41</b>	<b>10%(-)</b>
<b>Non-Violent Referrals</b>							
Burglary	459	369	335	312	249	-63	20%(-)
Theft	106	87	66	65	59	-6	9%(-)
Motor Vehicle Theft/UUMV	53	52	40	36	33	-3	8%(-)
Drug Offenses	113	114	135	118	84	-34	29%(-)
Weapons Violations	77	48	50	34	26	-8	24%(-)
Other Felony	253	234	168	129	116	-13	10%(-)
<b>Total Non-Violent Referrals</b>	<b>1061</b>	<b>904</b>	<b>794</b>	<b>694</b>	<b>567</b>	<b>-127</b>	<b>18%(-)</b>
<b>Total Felonies</b>	<b>1685</b>	<b>1508</b>	<b>1268</b>	<b>1117</b>	<b>949</b>	<b>-168</b>	<b>15%(-)</b>
<b>Class A &amp; B Misdemeanors</b>							
Weapons Violations	37	39	51	26	14	-12	46%(-)
Assault	825	705	667	610	630	20	3%(+)
Theft	1044	1026	892	620	560	-60	10%(-)
Drug Offenses	452	539	567	480	453	-27	6%(-)
Other Misdemeanor	1194	985	856	655	502	-153	23%(-)
Contempt of Court	6	7	19	13	8	-5	38%(-)
<b>Total Class A &amp; B Misdemeanors</b>	<b>3558</b>	<b>3301</b>	<b>3052</b>	<b>2404</b>	<b>2167</b>	<b>-237</b>	<b>10%(-)</b>
<b>Total Violation of Probation</b>	<b>366</b>	<b>401</b>	<b>343</b>	<b>397</b>	<b>799</b>	<b>402</b>	<b>&gt;100%(+)</b>
<b>Total Delinquent Conduct Referrals</b>	<b>5609</b>	<b>5210</b>	<b>4663</b>	<b>3918</b>	<b>3915</b>	<b>-3</b>	<b>&lt;1%(-)</b>
<b>CINS Referrals</b>							
Truancy	5	7	10	0	0	0	-
Runaway	362	300	231	209	199	-10	5%(-)
Theft	30	10	0	0	2	2	>100%(+)
Disorderly Conduct	2	2	1	2	1	-1	50%(-)
Inhalant Abuse	0	0	0	0	0	-	-
DUID	0	0	0	0	2	2	>100%(+)
Liquor Laws	15	10	0	0	0	-	-
Expulsions	120	132	122	26	26	-	-
Other	5	9	3	27	3	-24	89%(-)
<b>Total CINS Referrals</b>	<b>539</b>	<b>470</b>	<b>367</b>	<b>264</b>	<b>233</b>	<b>-31</b>	<b>12% (-)</b>
<b>Total Referrals</b>	<b>6148</b>	<b>5680</b>	<b>5030</b>	<b>4182</b>	<b>4148</b>	<b>-34</b>	<b>&lt;1%(-)</b>
<b>Total Juveniles</b>	<b>4298</b>	<b>3924</b>	<b>3586</b>	<b>3049</b>	<b>2837</b>	<b>-212</b>	<b>7%(-)</b>

### Referral Trends 2000 to 2012



## Referral Demographic Information

### Referrals by Gender & Ethnicity

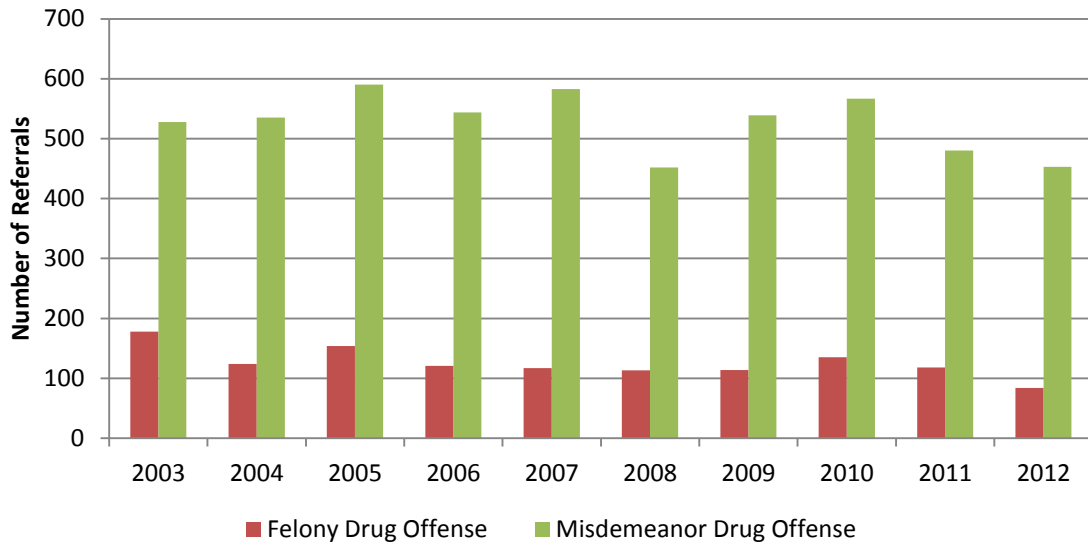


Demographic		Frequency	Percent
<b>Gender</b>			
Male		<b>3085</b>	<b>74.4%</b>
Female		<b>1063</b>	<b>25.6%</b>
<b>Ethnicity</b>			
Caucasian		<b>1192</b>	<b>28.7%</b>
African American		<b>1629</b>	<b>39.3%</b>
Hispanic		<b>1282</b>	<b>30.9%</b>
Other		<b>45</b>	<b>1.1%</b>

### Referrals by Age

Age	Frequency	Percentage
10	<b>24</b>	<b>0.6%</b>
11	<b>75</b>	<b>1.8%</b>
12	<b>163</b>	<b>3.9%</b>
13	<b>406</b>	<b>9.8%</b>
14	<b>805</b>	<b>19.4%</b>
15	<b>1080</b>	<b>26.0%</b>
16	<b>1412</b>	<b>34.0%</b>
17+	<b>183</b>	<b>4.4%</b>

## Drug Offenses: 2003-2012



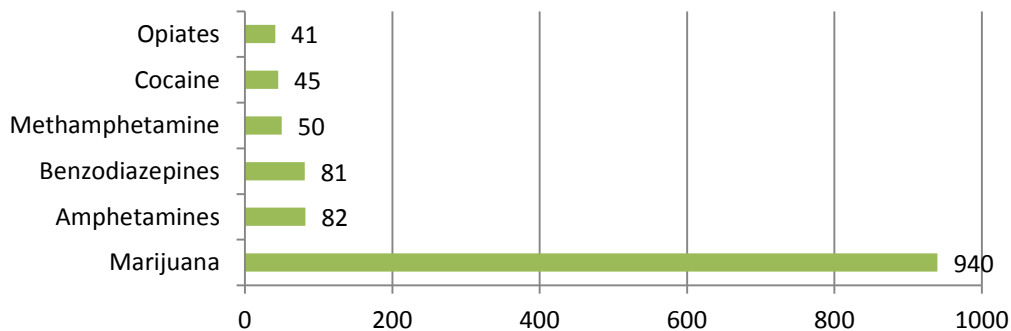
Offense Level	2003	2004	2005	2006	2007	2008	2009	2010	2011	2012
<b>Felony</b>	178	124	154	121	117	113	114	135	118	84
<b>Misdemeanor</b>	528	535	590	544	583	452	539	567	480	453
<b>TOTAL</b>	706	659	744	665	700	565	653	702	598	537

## Drug Testing

In 2012, 4185 Probation/Detention drug tests were performed:

- Less than 1% were inconclusive (n=8)
- 75.2% were negative (n=3149)
- 24.6% were positive (n=1028)
  - 84.7% tested positive for one drug (n= 871)
  - 15.37% tested positive for more than one drug (n=157)

**Frequency of Drugs Detected on Positive Drug Tests**





## Supervision Average Daily Population

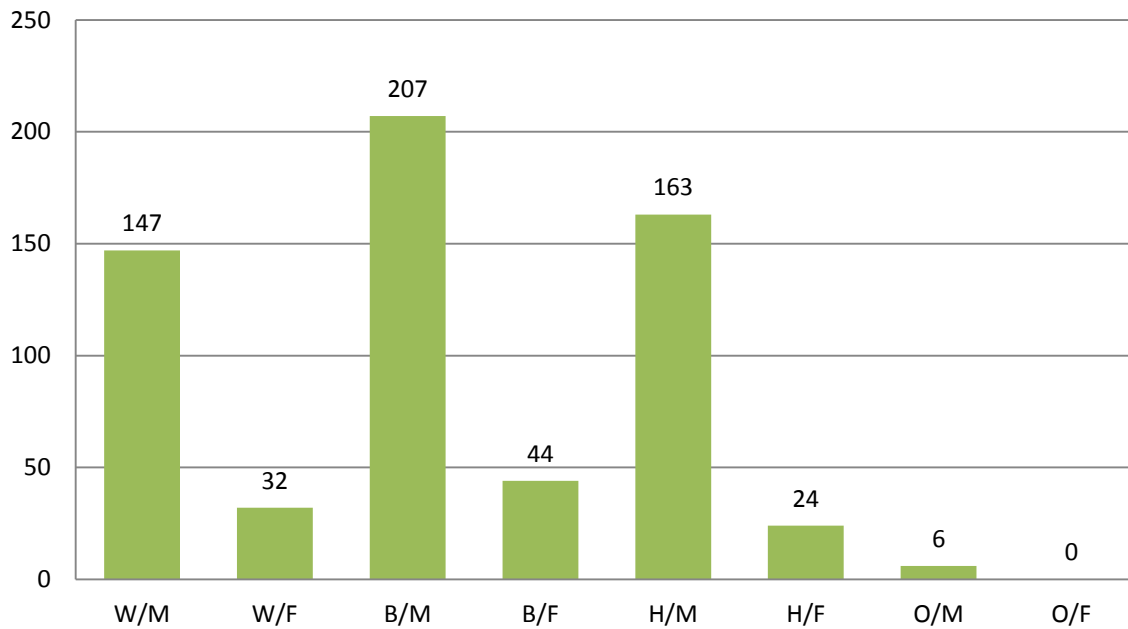
Supervision Type	ADP
All Supervisions	1052
Court-Ordered Probation	755
Deferred Prosecution Probation	240
Judgment Withheld	57

## Average Caseload by Unit

Unit	Average Caseload
Traditional Probation	21.1
Placement	12.6
Family Partnership Program (FPP)-SNDP	14.5
FPP-Specialized	8.8
Sex Offending	11.5
Drug Court	16.6

## Demographics of Youth Placed on Court-Ordered Probation

**Juveniles Placed on Court-Ordered Probation by Gender & Ethnicity**



### Juveniles Placed on Court-Ordered Probation by Gender & Ethnicity

Demographic	Frequency	Percent
Gender		
Male	523	83.9%
Female	100	16.1%
Ethnicity		
Caucasian	179	28.7%
African American	251	40.3%
Hispanic	187	30.0%
Other	6	1.0%

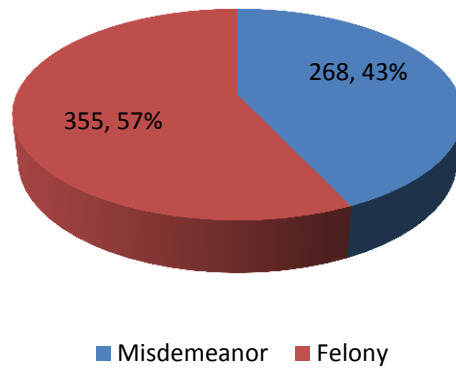
### Age of Juveniles Placed on Court-Ordered Probation

Age	Frequency	Percentage
10	1	0.2%
11	7	1.1%
12	16	2.6%
13	62	10.0%
14	113	18.1%
15	152	24.4%
16	231	37.1%
17+	41	6.6%
Average Age at Disposition = 15 years		

### Offense Category of Juveniles Placed on Court-Ordered Probation

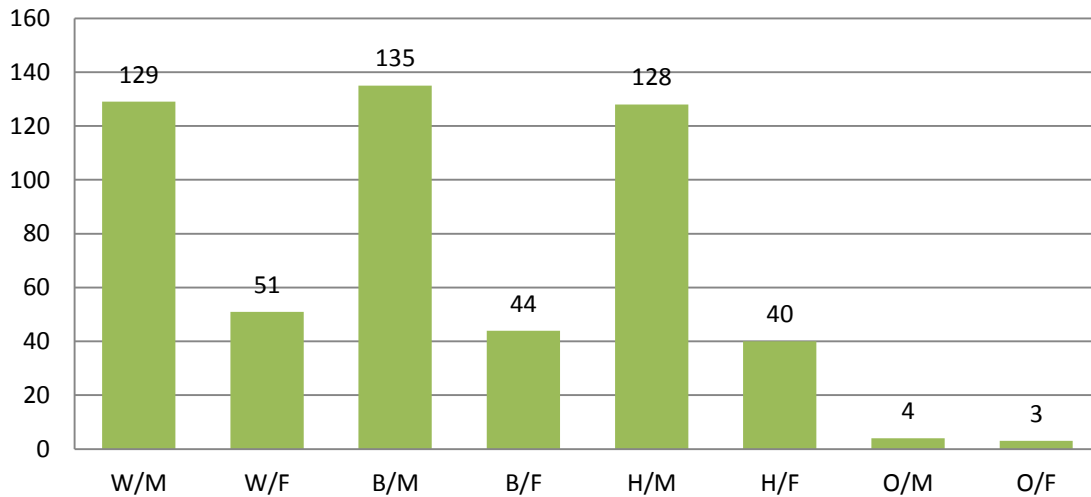
Offense Level	Offense Type	Count	Percentage
FELONY	Violent Against Person	155	24.9%
	Against Person	8	1.3%
	Property	158	25.4%
	Drug	19	3.0%
	Weapon	4	0.6%
	Public Order/Administration	11	1.8%
MISDEMEANOR	Against Person	95	15.2%
	Property	71	11.4%
	Drug	55	8.8%
	Weapon	7	1.1%
	Public Order/Administration	40	6.4%

### Juveniles Placed on Court-Ordered Probation by Offense Level



### Demographics of Youth Placed on Deferred Prosecution Probation

#### Juveniles Placed on Deferred Prosecution Probation by Gender & Ethnicity



Demographic	Frequency	Percent
<b>Gender</b>		
Male	<b>396</b>	<b>74.2%</b>
Female	<b>138</b>	<b>25.8%</b>
<b>Ethnicity</b>		
Caucasian	<b>180</b>	<b>33.7%</b>
African American	<b>179</b>	<b>33.5%</b>
Hispanic	<b>168</b>	<b>31.5%</b>
Other	<b>7</b>	<b>1.3%</b>

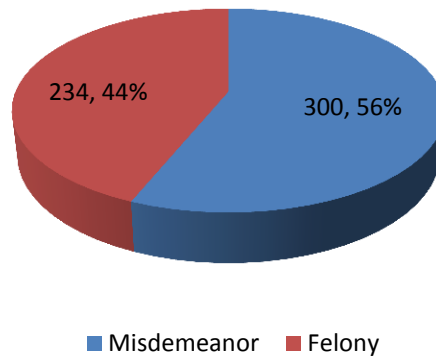
### Age of Juveniles Placed on Deferred Prosecution Probation

Age	Frequency	Percentage
10	5	0.9%
11	13	2.4%
12	29	5.4%
13	65	12.2%
14	98	18.4%
15	136	25.5%
16	166	31.1%
17+	22	4.1%
<b>Average Age at Disposition = 14.5 years</b>		

### Offense Category of Juveniles Placed on Deferred Prosecution Probation

Offense Level	Offense Type	Count	Percentage
<b>FELONY</b>	Violent Against Person	91	17.0%
	Against Person	4	0.7%
	Property	100	18.7%
	Drug	26	4.9%
	Weapon	4	0.7%
	Public Order/Administration	9	1.7%
<b>MISDEMEANOR</b>	Against Person	120	22.5%
	Property	119	22.3%
	Drug	38	7.1%
	Weapon	1	0.2%
	Public Order/Administration	22	4.1%

### Juveniles Placed on Deferred Prosecution Probation by Offense Level



## Specialized Caseloads

### Number Served & Completion Status

Specialized Unit	Number Served	Number of Completions	Other Completions	Successful Completions	Unsuccessful Completions
Placement	141	90	4	65 (75.6%)	21 (24.4%)
Family Partnership Program (FPP)-SNDP	142	87	15	58 (80.6%)	14 (19.4%)
Family Partnership Program (FPP)-Specialized	90	52	0	42 (80.8%)	10 (19.2%)
Sex Offending	138	51	3	40 (83.3%)	8 (16.7%)
Drug Court	187	110	0	94 (85.5%)	16 (14.5%)

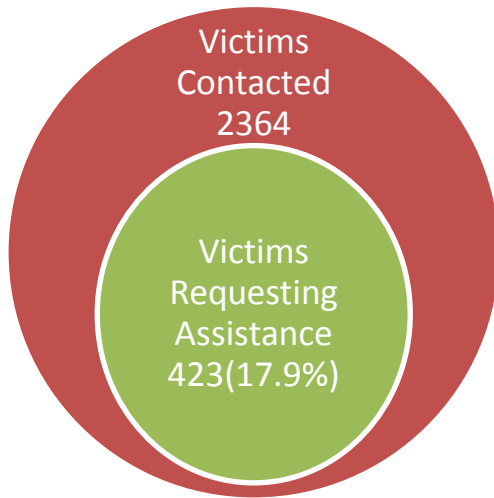
### Community Service & Restitution Project

<b>Total Number of Hours</b>	<b>11153</b>
<b>Number Served</b>	<b>536</b>
<b>Successful Completions</b>	<b>345</b>
DPP	130
Court-Ordered	101
Drug Court	114
<b>Unsuccessful Completions</b>	<b>49</b>
DPP	19
Court-Ordered	26
Drug Court	4
<b>Other Completions</b>	<b>14</b>
<b>Average Caseload</b>	<b>42.9</b>

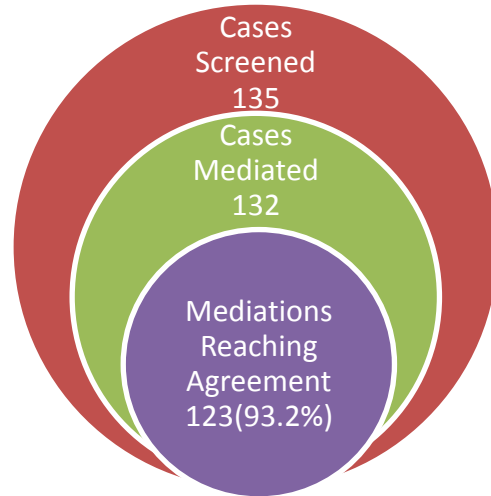


## Victim's Assistance Unit

### Victim Assistance Packets



### Victim Offender Mediation Program



### Restitution Project

Restitution/Fee Type	Total Active Cases during 2012	New Cases Added during 2012	Amount Paid
<b>Voluntary Restitution</b>	421	137	\$45,350.65
<b>Court-Ordered Restitution</b>	428	110	\$27,181.20
<b>Court-Ordered Attorney Fees</b>	200	23	\$3,253.53
<b>Court-Ordered Probation Fees</b>	849	188	\$13,446.46
<b>Court-Ordered Court Fees</b>	546	152	\$1,474.17
<b>Court-Ordered Child Support</b>	3	3	\$2,694.00
<b>Deferred Prosecution Probation Fees</b>	927	230	\$8,967.45
<b>TOTAL</b>	3374	843	\$102,367.46

## Community Programs

Program	Number Served	Number of Completions	Other Completions*	Successful Completions	Unsuccessful Completions
<b>Project ASPECT**</b>	76	76	7	55 (79.7%)	14 (20.3%)
<b>Family Preservation (Functional Family Therapy)</b>	194	142	13	91 (70.5%)	38 (29.5%)
<b>Family Preservation (Families in Transition)</b>	70	51	2	36 (73.5%)	13 (26.5%)
<b>TCAP (Court Transition)</b>	56	56	0	48 (85.7%)	8 (14.3%)
<b>TCAP (Intensive)</b>	181	134	9	87 (69.6%)	38 (30.4%)
<b>Cassata</b>	31	24	1	14 (60.9%)	9 (39.1%)
<b>Neighborhood Conferencing Committee (NCC)</b>	34	29	0	27 (93.1%)	2 (6.9%)
<b>CATIE-REACH</b>	58	31	2	20 (69.0%)	9 (31.0%)
<b>UHC***</b>	13	8	0	8 (100.0%)	0 (0.0%)
<b>CUF***</b>	21	19	0	16 (84.2%)	3 (15.8%)

\*Youth who are discharged from programs for "other" reasons are not included in the number of completions or calculating percent of successful completions and percent of unsuccessful completions.

\*\*Project ASPECT ended on 8/31/2012.

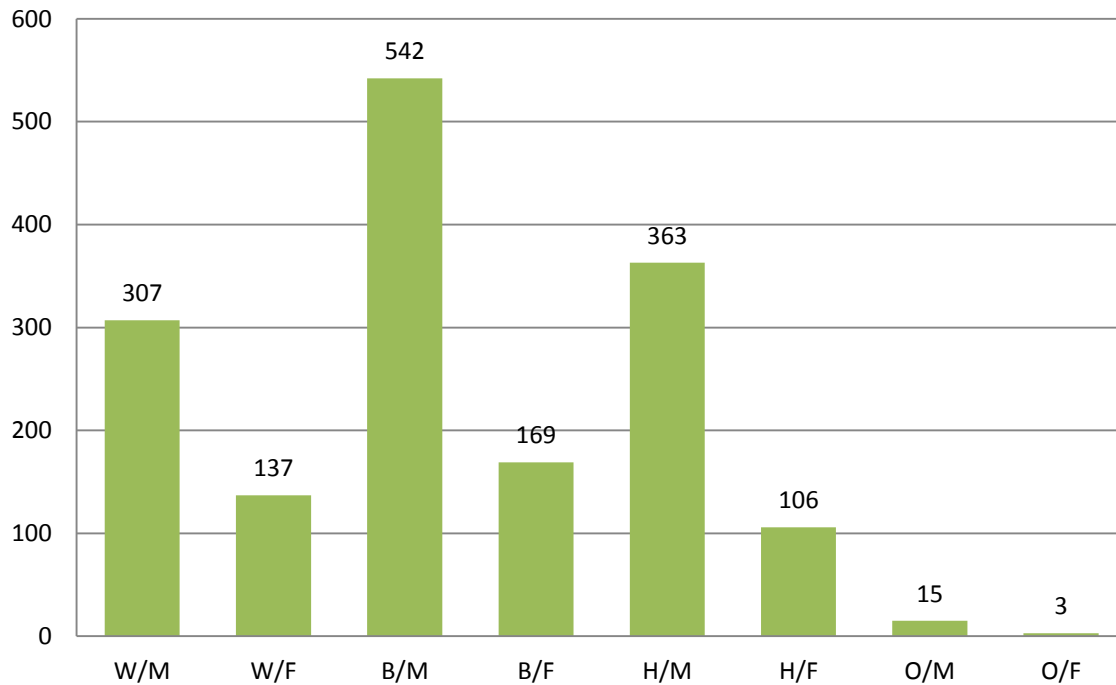
\*\*\*Diversion Programs UHC & CUF began 2/20/2012.

## Lynn W. Ross Juvenile Detention Center

<b>Number of Admissions</b>	<b>1642</b>
<b>Number of Individual Youth Admitted</b>	<b>1162</b>
<b>Child Care Days</b>	<b>18932</b>
<b>Average Daily Population</b>	<b>51.78</b>
<b>Average Length of Stay</b>	<b>11.48</b>

### Demographics of Admitted Youth

Detention Admissions by Gender & Ethnicity



### Detention Admissions by Gender & Ethnicity

Demographic	Frequency	Percent
Gender		
Male	<b>1227</b>	<b>74.7%</b>
Female	<b>415</b>	<b>25.3%</b>
Ethnicity		
Caucasian	<b>444</b>	<b>27.0%</b>
African American	<b>711</b>	<b>43.3%</b>
Hispanic	<b>469</b>	<b>28.6%</b>
Other	<b>18</b>	<b>1.1%</b>

### Detention Admissions by Age

Age	Frequency	Percentage
10	<b>7</b>	<b>0.4%</b>
11	<b>24</b>	<b>1.5%</b>
12	<b>47</b>	<b>2.9%</b>
13	<b>154</b>	<b>9.4%</b>
14	<b>318</b>	<b>19.4%</b>
15	<b>441</b>	<b>26.9%</b>
16	<b>572</b>	<b>34.8%</b>
17+	<b>79</b>	<b>4.8%</b>
<b>Average Age at Admission = 15 years</b>		

### Detention Admissions by Reason Detained

Reason	Frequency	Percentage
Dangerous to Self/Others	<b>507</b>	<b>30.9%</b>
Previously found Delinquent	<b>497</b>	<b>30.3%</b>
Inadequate Supervision	<b>339</b>	<b>20.7%</b>
No Parent Guardian	<b>183</b>	<b>11.1%</b>
Court Order	<b>52</b>	<b>3.2%</b>
Likely to Abscond	<b>45</b>	<b>2.7%</b>
Alleged Delinquent Conduct	<b>7</b>	<b>0.4%</b>
Pending Transport to Placement	<b>7</b>	<b>0.4%</b>
Pending Transport to TYC	<b>5</b>	<b>0.4%</b>

## Juvenile Justice Alternative Education Program

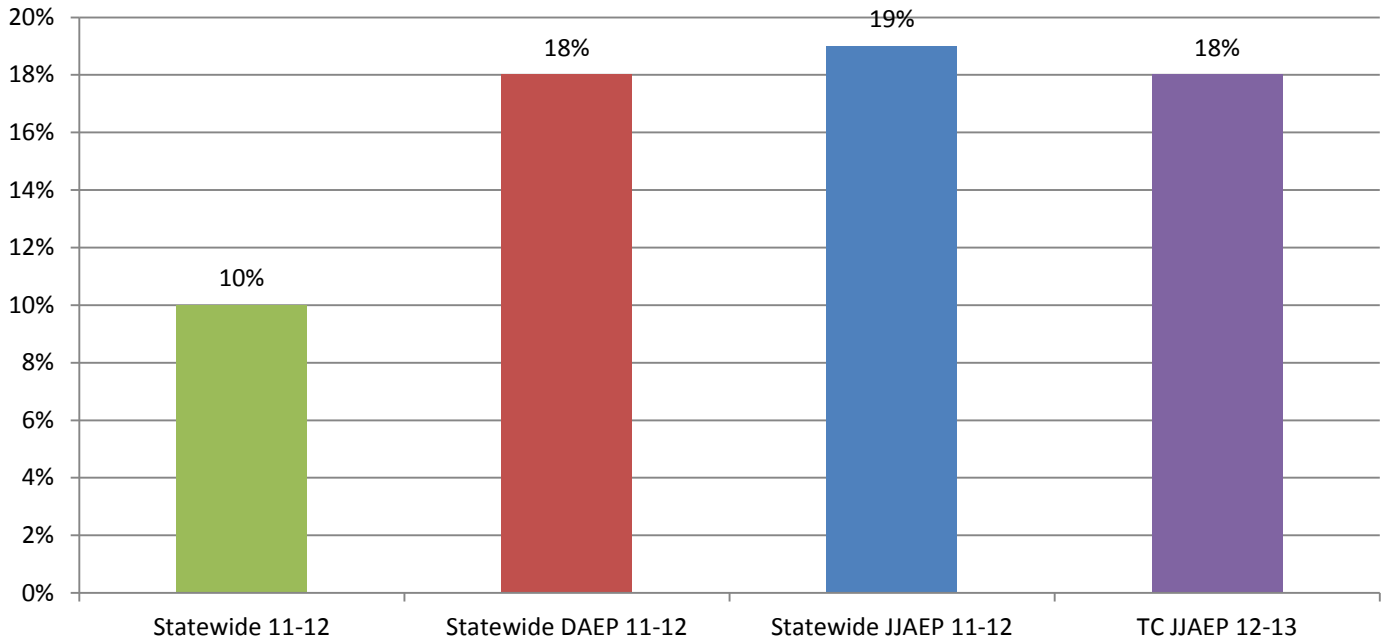
	2009/10						2010/11						2011/12						2012/13							
<b>New Referrals (Total Served)</b>	N=280 (383)						N=200 (322)						N=173 (254)						N=134 (200)							
<b>Expulsion Offense</b>																										
Juvenile Court Ordered							1 (<1%)												4 (3%)							
Mandatory	151 (54%)						121 (61%)						100 (58%)						80 (60%)							
Discretionary	129 (46%)						78 (39%)						73 (42%)						50 (37%)							
<b>School District</b>	M	MS	D	DS	T	%	M	MS	D	DS	T	%	M	MS	D	DS	T	%	M	MS	D	DS	CO	COS	T	%
Arlington	16	2	44	14	76	27%	7	0	29	7	43	22%	5	1	16	2	24	14%	7	0	4	0	0	1	12	9%
Azle	4	0	0	0	4	1%	0	0	0	0	0	0%	0	0	2	0	2	1%	1	0	1	0	0	0	2	2%
Birdville	0	0	5	4	9	3%	2	0	8	0	10	5%	2	1	5	1	9	5%	1	1	5	3	0	0	10	8%
Burleson	3	1	0	0	4	1%	2	0	1	0	3	2%	1	0	0	3	4	2%	0	0	0	0	0	0	0	0%
Carroll	0	0	0	0	0	0%	0	0	0	0	0	0%	0	0	0	0	0	0%	0	0	0	0	0	0	0	0%
Castleberry	3	1	3	1	8	3%	1	1	0	0	2	1%	0	0	0	0	0	0%	0	0	2	0	0	0	2	2%
Crowley	3	0	0	0	3	1%	5	1	1	0	7	4%	1	0	0	0	1	1%	5	0	1	0	0	0	6	5%
Eagle Mountain-Saginaw	4	0	5	0	9	3%	5	1	2	1	9	5%	22	0	1	1	24	14%	8	3	0	0	0	0	11	8%
Everman	0	0	0	0	0	0%	0	0	0	0	0	0%	0	1	0	0	1	1%	1	0	0	0	0	0	1	<1%
Fort Worth	64	14	32	2	112	40%	54	9	17	0	80	40%	38	5	25	4	72	42%	34	4	22	6	2	0	68	51%
Grapevine-Colleyville	2	0	2	0	4	1%	8	0	1	0	9	5%	4	2	0	2	8	5%	2	1	0	0	0	0	3	2%
Hurst Euless Bedford	8	2	0	2	12	4%	8	2	2	0	12	6%	4	0	1	0	5	3%	3	2	0	0	1	0	6	5%
Keller	9	0	0	1	10	4%	3	0	0	0	3	2%	1	1	1	0	3	2%	3	0	0	0	0	0	3	2%
Kennedale	6	0	3	0	9	3%	0	0	0	0	0	0%	0	0	0	0	0	0%	0	0	0	0	0	0	0	0%
Lake Worth	1	0	1	0	2	1%	1	0	4	0	5	3%	4	0	3	0	7	4%	0	0	0	0	0	0	0	0%
Mansfield	0	1	2	2	5	2%	6	2	1	2	11	6%	1	1	6	0	8	5%	2	0	3	3	0	0	8	6%
Northwest	1	0	0	0	1	<1%	0	0	0	0	0	0%	0	0	0	0	0	0%	0	0	0	0	0	0	0	0%
White Settlement	7	1	3	1	12	4%	3	0	0	2	5	3%	4	1	0	0	5	3%	2	0	0	0	0	0	2	2%
<b>Classified Special Education</b>	M	D	T (%)	M	D	T (%)	M	D	T (%)	M	D	C	T (%)													
LD	18	8	26 (55%)	9	5	14 (50%)	3	3	6 (23%)	5	6	1	12 (50%)													
ED	1	6	7 (15%)	4	2	6 (21%)	4	6	10 (38%)	4	3	0	7 (29%)													
OHI	2	6	8 (17%)	2	4	6 (21%)	4	3	7 (27%)	2	2	0	4 (17%)													
LD/ED	0	1	1 (2%)	0	0	0 (0%)	1	0	1 (4%)	0	0	0	0 (0%)													
ED/OHI	0	2	2 (4%)	1	0	1 (4%)	0	0	0 (0%)	0	1	0	1 (4%)													
LD/OHI	2	1	3 (6%)	0	0	0 (0%)	0	0	0 (0%)	0	0	0	0 (0%)													
MR	0	0	0 (0%)	0	1	1 (4%)	1	1	2 (8%)	0	0	0	0 (0%)													
<b>TOTAL</b>	23 (15%)	24 (19%)	4 (17%)	16 (13%)	12 (15%)	28 (14%)	13 (13%)	13 (18%)	26 (15%)	11 (14%)	12 (24%)	1 (25%)	24 (18%)													

\*Demographic information is presented for new referrals.

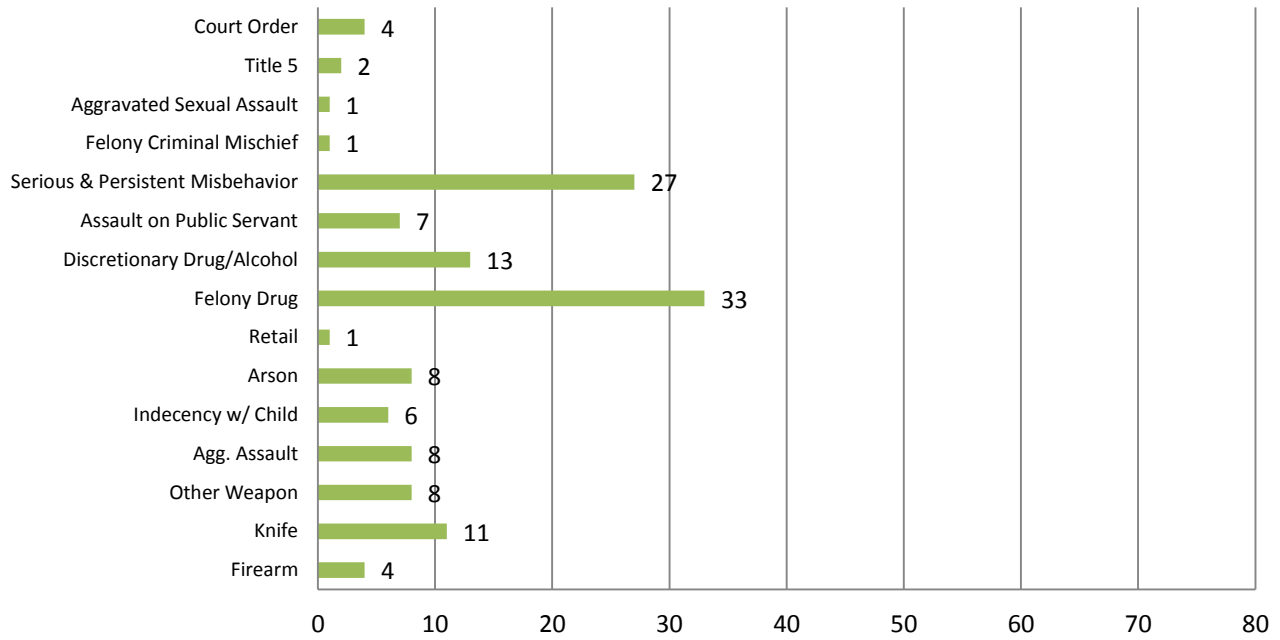
\*M=Mandatory, MSE=Mandatory Special Education, D= Discretionary, DSE= Discretionary Special Education

	2008/09	2009/10	2010/11	2011/12	2012/13
New Referrals	<b>N=262</b>	<b>N= 280</b>	<b>N=200</b>	<b>N=173</b>	<b>N=134</b>
<b>Gender</b>					
Male	225 (86%)	223 (80%)	165 (83%)	152 (88%)	<b>113 (84%)</b>
Female	37 (14%)	57 (20%)	35 (18%)	21 (12%)	<b>21 (16%)</b>
<b>Ethnicity</b>					
African American	101 (39%)	86 (31%)	69 (35%)	59 (34%)	<b>46 (34%)</b>
American Indian	0 (0%)	0 (0%)	0 (0%)	0 (0%)	<b>3 (2%)</b>
Asian	3 (1%)	3 (1%)	5 (3%)	3 (2%)	<b>1 (1%)</b>
Caucasian	54 (21%)	84 (30%)	46 (23%)	42 (24%)	<b>31 (23%)</b>
Hispanic	104 (40%)	106 (38%)	80 (40%)	69 (40%)	<b>53 (40%)</b>
Other	0 (0%)	1 (<1%)	0 (0%)	0 (0%)	<b>0 (0%)</b>
<b>Grade Level</b>					
4 <sup>th</sup>	2 (<1%)	0 (0%)	0 (0%)	0 (0%)	<b>1 (1%)</b>
5 <sup>th</sup>	0 (0%)	4 (1%)	2 (1%)	3 (2%)	<b>3 (2%)</b>
6 <sup>th</sup>	8 (3%)	15 (5%)	11 (6%)	9 (5%)	<b>10 (7%)</b>
7 <sup>th</sup>	34 (13%)	36 (13%)	25 (13%)	16 (9%)	<b>24 (18%)</b>
8 <sup>th</sup>	56 (21%)	51 (18%)	41 (21%)	47 (27%)	<b>24 (18%)</b>
9 <sup>th</sup>	89 (34%)	82 (29%)	54 (27%)	46 (27%)	<b>39 (29%)</b>
10 <sup>th</sup>	34 (13%)	48 (17%)	30 (15%)	32 (18%)	<b>15 (11%)</b>
11 <sup>th</sup>	28 (11%)	26 (9%)	11 (6%)	16 (9%)	<b>7 (5%)</b>
12 <sup>th</sup>	11 (4%)	18 (6%)	26 (13%)	4 (2%)	<b>11 (8%)</b>

### Tarrant County JJAEP Special Education Enrollment/Referrals



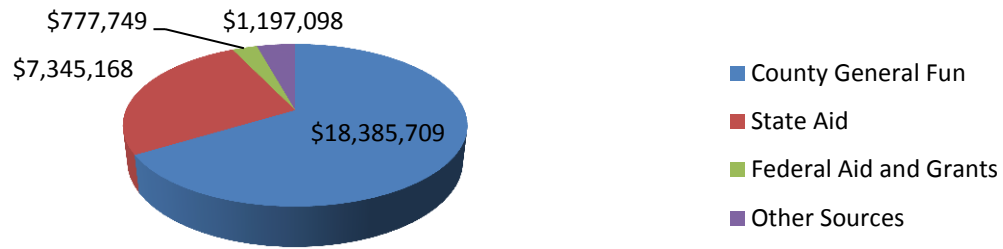
### Tarrant County JJAEP Cause for Expulsion: 2012/2013



### Tarrant County JJAEP Discharge Reason: 2012/2013

Discharge Reasons	Never Enrolled	Enrolled
Completed Expulsion Term	0	90
Graduated	0	5
Obtained GED	0	4
Enrolled or Court Ordered GED Program	1	2
ISD Rescinded Expulsion	6	13
ARD-ISD Rescinded Expulsion	0	0
Certified as an Adult	0	0
TYC	1	3
Jail (30 consecutive school days)	1	1
Placement/JPD	0	3
Placement/Parent	0	0
CPS Custody/Placement	0	1
Detention (30 consecutive school days)	0	0
Treatment (TYRC, Millwood, Excel)	0	20
Moved to Another District (out of Tarrant County)	2	10
Home School	1	4
Private School	1	0
Drop out/18-19 years of age	0	0
Unable to Locate	0	0
Truancy (40 consecutive unexcused absences)	0	0
Runaway/DTA (30 consecutive school days)	0	0
Adult Court Order-no contact with Minors	0	0
<b>Total</b>	<b>13</b>	<b>157</b>

## Tarrant County Juvenile Services Source of Funds: Fiscal Year 2012



<b>COUNTY GENERAL FUND:</b>		<b>\$18,385,709</b>
General Fund - Administration & Probation	\$12,390,440	
▪ Includes support funding for JJAEP and Grant Match		
General Fund - Detention	5,955,663	
Children's Home Trust	4,682	
Probation Fees	24,773	
Miscellaneous Donations	9,545	
Interest Account	606	
<b>STATE AID – TEXAS JUVENILE PROBATION COMMISSION</b>		<b>\$7,345,168</b>
State Aid	\$ 6,072,227	
Special Needs Diversionary Program	216,800	
Commitment Reduction Program	1,009,230	
Prevention/Intervention	46,911	
<b>FEDERAL AID AND GRANTS:</b>		<b>\$777,749</b>
Title IV-E Reimbursements (Through TDPLRS)	\$485,551	
National School Lunch Program	123,740	
Juvenile Accountability Block Grant	168,458	
<b>OTHER SOURCES:</b>		<b>\$1,197,098</b>
JJAEP Mandatory Reimbursement - TJPC	\$561,848	
JJAEP Discretionary Reimbursement - ISD's	635,250	
<b>GRAND TOTAL – FY 2012 SOURCES OF FUNDS</b>		<b>\$27,705,724</b>