

TARRANT COUNTY PUBLIC HEALTH DATA BRIEF

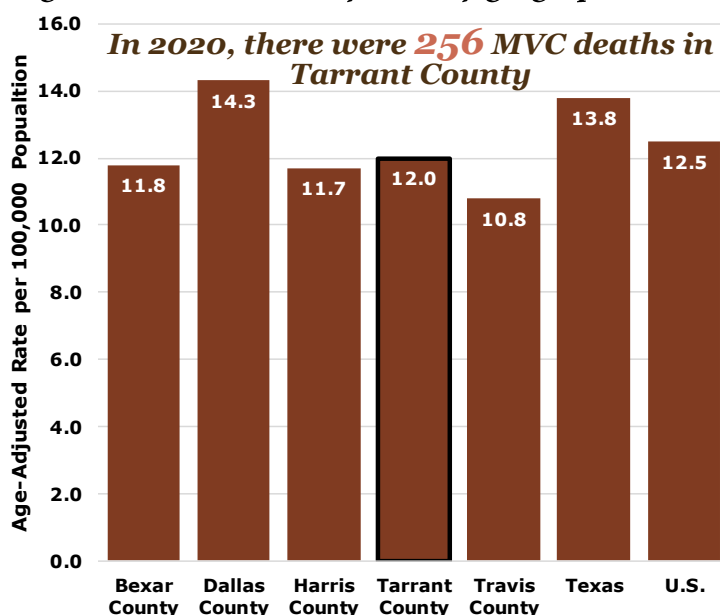


MOTOR VEHICLE COLLISIONS IN TARRANT COUNTY

Motor Vehicle Collision (MVC)

A crash that occurs between motor vehicles (car, van, pick-up truck, etc.) or a motor vehicle and a pedal cyclist, motorcyclist, bus, train, streetcar, non-motorized road vehicle, special-use motor vehicle, pedestrian, animal, or stationary object. MVCs also include incidents of overturning without collision. MVCs are *preventable* and may result in injury or death.

Figure 1. MVC mortality rates by geographical location, 2020



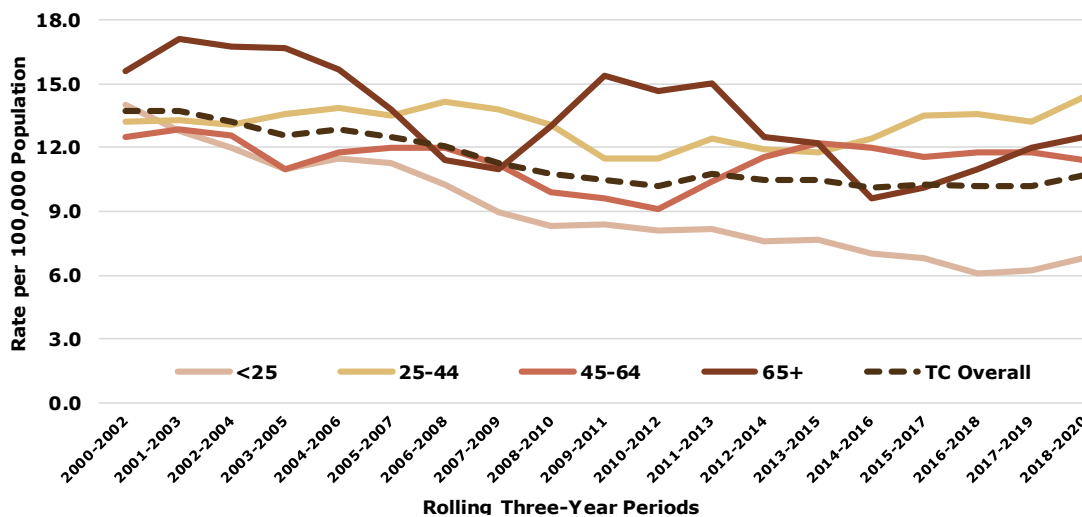
In 2020, there were **256** MVC deaths in Tarrant County

In 2020, Tarrant County MVC mortality was **significantly higher among men (17.5)** compared to women (6.7), and among individuals aged **25-44 years (17.0)** compared to individuals aged **<25 years (8.3)**



ICD-10 113 cause list: motor vehicle accidents (V02-V04,V09.0,V09.2,V12-V14,V19.0-V19.2,V19.4-V19.6,V20-V79,V80.3-V80.5,V81.0-V81.1,V82.0-V82.1,V83-V86,V87.0-V87.8,V88.0-V88.8,V89.0,V89.2)

Figure 2. Tarrant County MVC mortality rates by age group and overall, 2000-2020*



There was a **significant decrease** in Tarrant County MVC mortality **overall** and among individuals aged **<25 years**

*Three-year rolling rates used due to data suppression. Age-specific rate per 100,000 population for age groups. Age-adjusted rate per 100,000 population for Tarrant County overall.

All data used in the brief (fatal and non-fatal) include all persons involved in the MVC, not just the driver. Mortality data based on county of residence. All significant differences detected at the 95% confidence level. Data sources: Centers for Disease Control and Prevention (CDC) Data Brief provided by: Division of Epidemiology and Health Information

Figure 3. Proportion of Tarrant County MVCs by weather condition, 2021

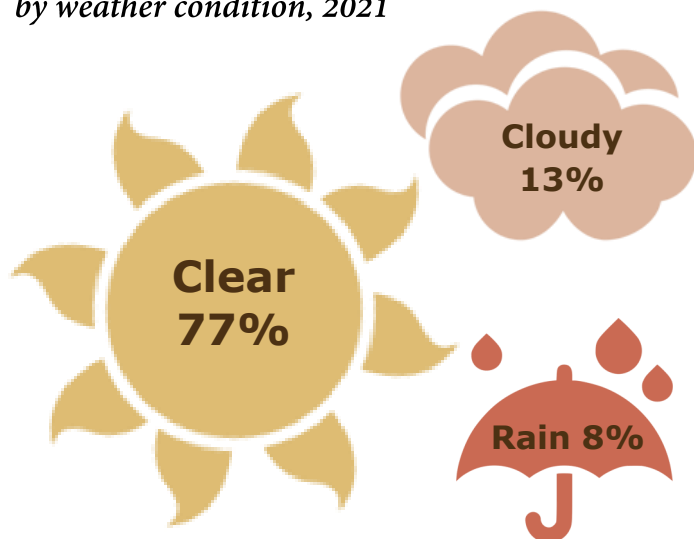
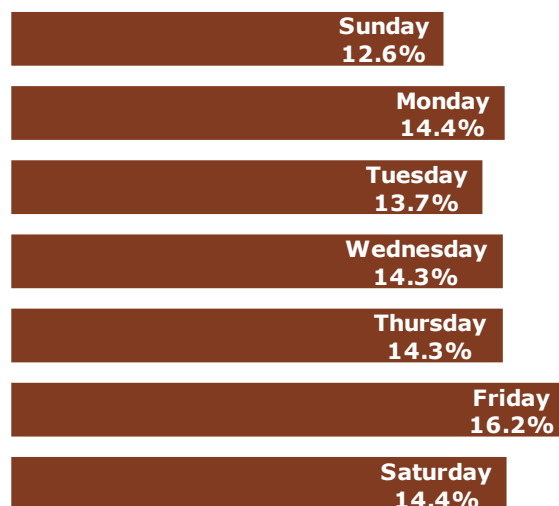
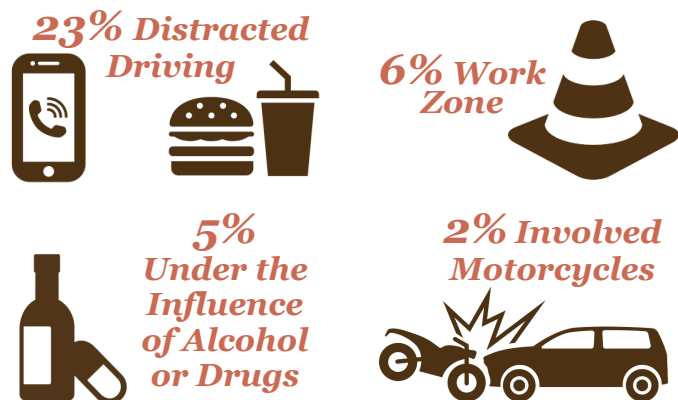


Figure 4. Proportion of Tarrant County MVCs by day of the week, 2021



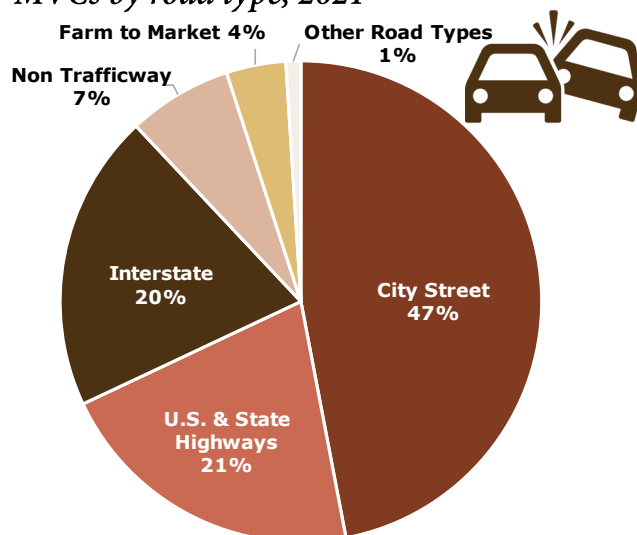
In 2021, there were approximately 35,700 MVCs that involved 90,800 people in Tarrant County

Among Tarrant County MVCs in 2021:



MVC characteristics are not mutually exclusive. *Distracted driving collisions:* crashes where any person is reported with driver inattention, distraction in vehicle, or cell/mobile device use. *Work zone collisions:* crashes occurring in or involved in work zones. *Driving under the influence of alcohol or drugs:* driver reported with contributing factors of under the influence of alcohol or had been drinking, taking meds, or under the influence of drugs, or test resulting in a blood alcohol concentration greater than 0 or tested positive for drug test. *Motorcycles:* drivers and passengers on motorcycles.

Figure 5. Proportion of Tarrant County MVCs by road type, 2021



How to Prevent MVCs

- Wear a **seat belt** (every person, every seat, every time)
- Wear a **helmet** (drivers/passengers of bicycles, motorcycles, etc.)
- Secure children in a **car seat, booster seat, or seat belt in the back seat** (appropriate device for their age, height, and weight)
- Drive **without distractions** (texting, phone calls, eating, GPS, etc.)
- **Do not drive while impaired by alcohol or drugs/medication**
- **Do not drive while having difficulty staying awake**
- **Obey speed limits and rules of the road**
- **Be aware of surroundings** (vehicles/pedestrians/motorcyclists)
- Schedule routine **vehicle maintenance**
- Schedule annual **eye exams** and get **corrective lenses** if necessary
- Limit driving in poor weather conditions
- Use alternatives: Ride share services, public transit, carpool, etc.
- **Pedestrians: Use sidewalks and crosswalks. Make yourself visible by wearing bright clothes and bringing a light source**

Resources and Services

- Safe Kids North Texas (Cook Children’s) FREE car seat fittings
 Call **682-885-2634** or **Book Online** [cookchildrens.org/health-resources/safety/Pages/vehicle-safety.aspx]
 Car Seat Guide [safekids.org/ultimate-car-seat-guide/]
 Teens [t-driver.com/] & College Students [u-driver.com/]
 Older Adults [cdc.gov/motorvehiclesafety/older_adult_drivers/mymobility/index.html]
-
- [lookouttexas.org/] [txdot.gov/safety/bicycle-pedestrian-safety.html]
 [visionzerotexas.org/] [txdot.gov/safety/driving-laws.html]
 [nsc.org/road-safety] [txdot.gov/safety/traffic-safety-campaigns.html]
 [nhsta.gov/]

Collision data based on location of incident. CRIS data represent reportable data collected from Texas Peace Officer’s Crash Reports (CR-3) received and processed by the Texas Department of Transportation (TxDOT).
 Data sources: CDC, Safe Kids North Texas, Texas Department of Transportation (TxDOT- CRIS database)
 Data Brief provided by: Division of Epidemiology and Health Information