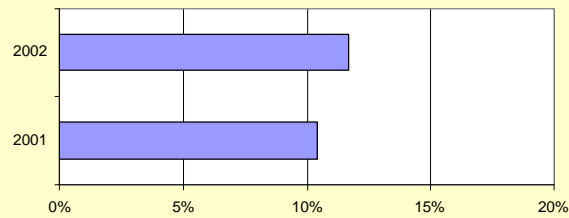


HIV & AIDS IN TARRANT COUNTY 2002

HIV and AIDS 2002

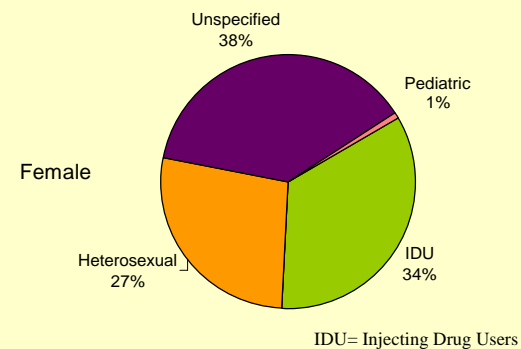
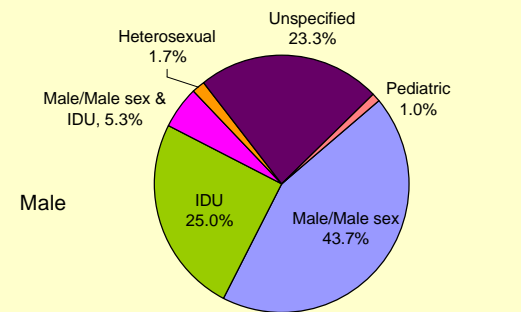
	HIV	AIDS
Total	240	172
Sex		
Male	175	125
Female	64	47
Not-reported	1	0
Race/Ethnicity		
White	96	66
Black	101	58
Hispanic	29	44
Other	0	4
Not-reported	14	0
Age		
0-9	5	0
10-19	9	5
20-29	66	34
30-39	83	70
40-49	59	44
50+	18	19

HIV Co-infection with Syphilis***

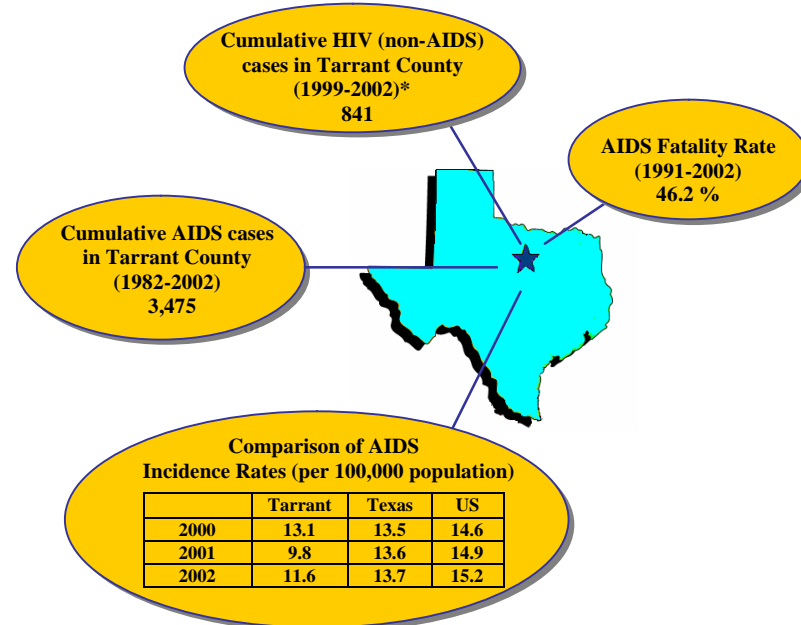


*** Syphilis is the most prominent identified co-infection in HIV patients in Tarrant County. HIV positive individuals co-infected with syphilis and/or other STDs have an earlier onset of severe complications.

HIV+/AIDS Cases by Modes of Transmission 2002

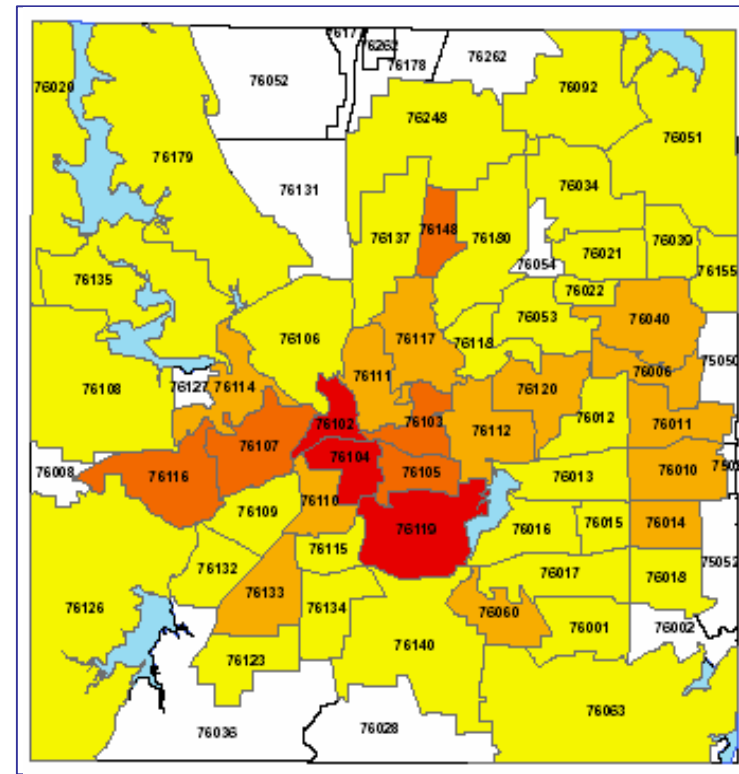


IDU= Injecting Drug Users



* HIV+ name reporting was started in 1999
Data Source: TCPH HIV/AIDS Surveillance, TDH

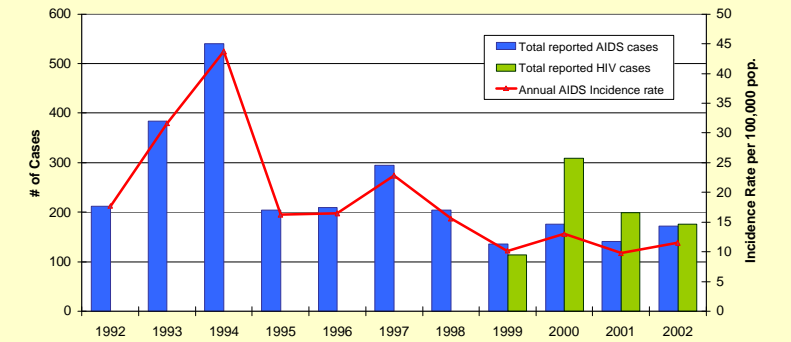
CUMULATIVE INCIDENCE RATE** OF HIV/AIDS BY ZIP CODE TARRANT COUNTY 1999-2002



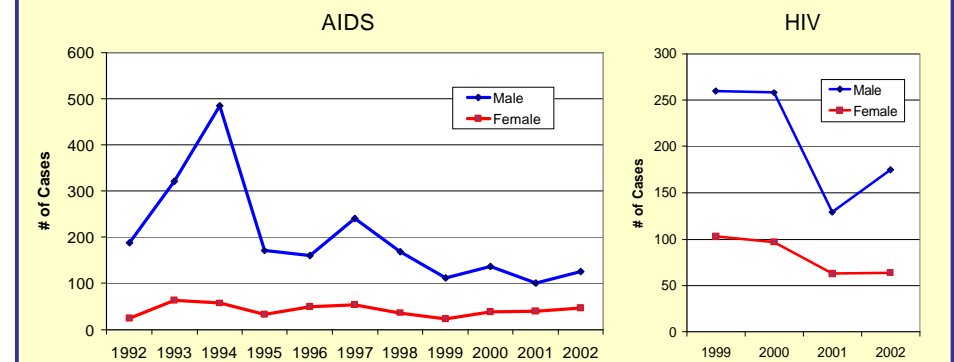
Highest Quartile	2 nd Quartile	3 rd Quartile	Lowest Quartile
> 95**	46 – 95**	24 – 45**	< 24**
□ No cases or less than 5 cumulative HIV and AIDS cases per ZIP code			

** Cumulative Incidence Rate (per 100,000)

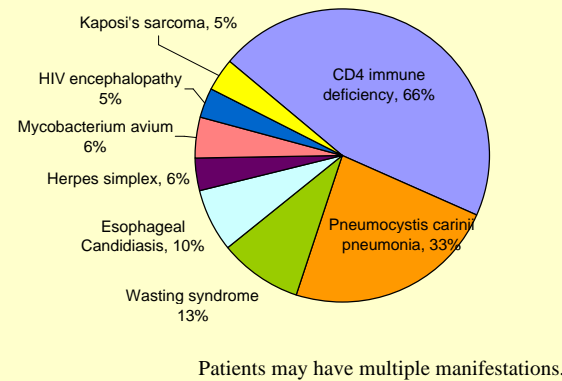
HIV & AIDS Cases in Tarrant County 1992-2002



HIV & AIDS Cases by Gender 1992-2002

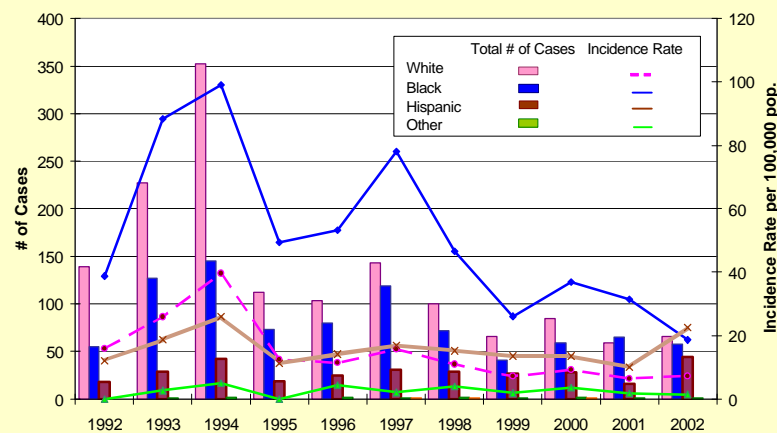


Major Manifested Diseases of AIDS Patients



Patients may have multiple manifestations.

AIDS Cases by Race/Ethnicity 1992-2002



Tarrant County Public Health
Director: Lou K. Brewer, RN, MPH
For more information:
Epidemiology and Health Information
Phone 817.321.5350
Fax 817.321.5353
<http://health.tarrantcounty.com>

Emergency Contact
24hr Pager 817.418.1065
24hr Cell 817.994.3708

3/2004