

HIV & AIDS IN TARRANT COUNTY 2003

Total Number and Rate of HIV and AIDS

	HIV		AIDS	
	Frequency	Rate ¹	Frequency	Rate ¹
Total²	383	25.4	198	13.1
Sex				
Male	289	38.6	142	19.0
Female	94	12.4	56	7.4
Race/Ethnicity				
White	155	17.0	84	9.2
Black	152	76.4	71	35.7
Hispanic	64	19.8	37	11.4
Other	< 5	-	< 5	-
Age				
0-9	< 5	-	0	0.0
10-19	20	8.9	< 5	-
20-29	113	51.4	26	11.8
30-39	151	61.3	87	35.3
40-49	69	28.9	55	23.0
50+	27	7.8	27	7.8

1. Rate: Incidence rate per 100,000 population.
2. Included in the total were 8 HIV cases and 3 AIDS cases of unspecified Race/Ethnicity group.

AIDS Fatality Rate (1991-2003)
52%

Cumulative HIV (non-AIDS) and AIDS cases in Tarrant County
HIV (1999-2003)³: 1,308
AIDS (1982-2003): 3,658

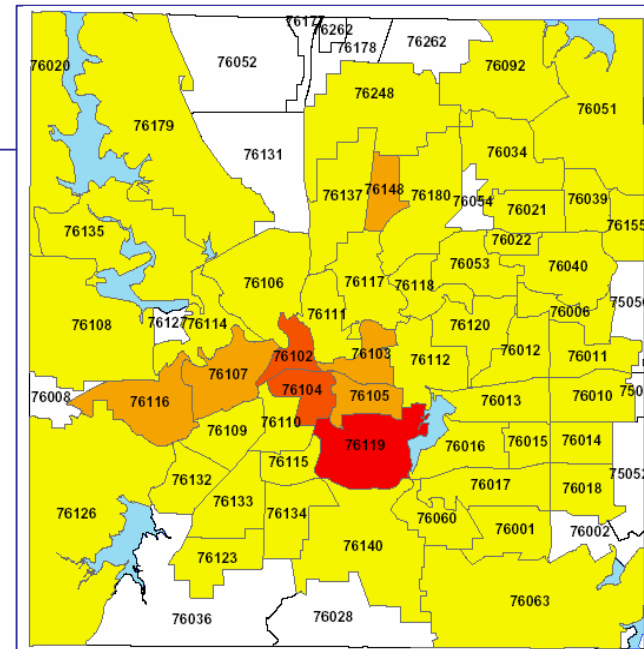
Comparison of AIDS Incidence Rates (per 100,000 population)

	Tarrant	Texas	U.S. ⁵
2000	13.1	13.5	14.6
2001	9.8	13.6	14.9
2002	11.6	13.7	15.2
2003	13.1	17.3	-

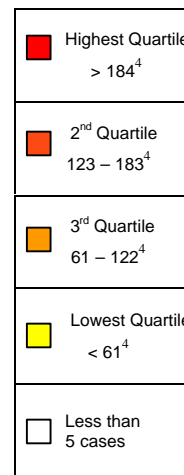
3. HIV name reporting was started in 1999.
4. Cumulative Incidence Rate (per 100,000).
5. AIDS incidence rate for United States, 2003 is not yet available.

Numbers represent cases entered in HIV/AIDS Registry System during the specified period.

CUMULATIVE INCIDENCE RATE⁴ OF HIV/AIDS BY ZIP CODE TARRANT COUNTY 1999-2003



Map Legend



Tarrant County Public Health
Director: Lou K. Brewer
RN, MPH



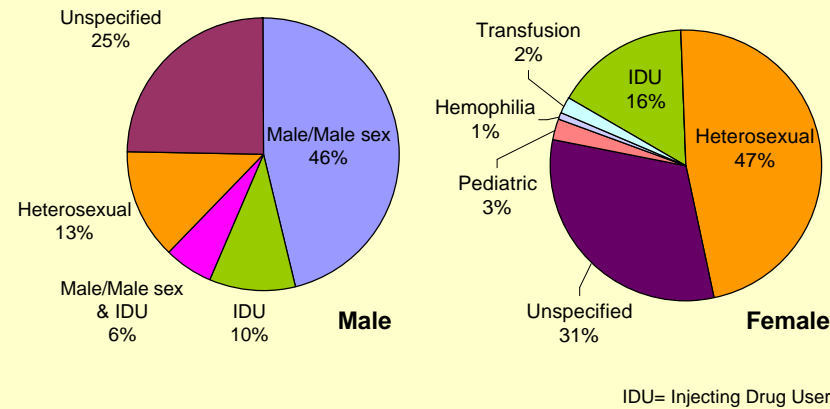
For more information:
Epidemiology & Health Information

Phone 817.321.5350
Fax 817.321.5353
<http://health.tarrantcounty.com>

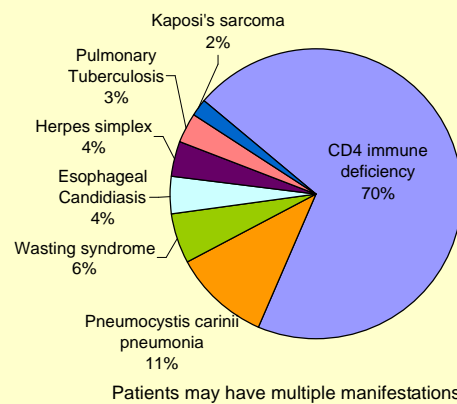
Emergency Contact
24hr Pager 817.418.1065
24hr Cell 817.994.3708

4/2004

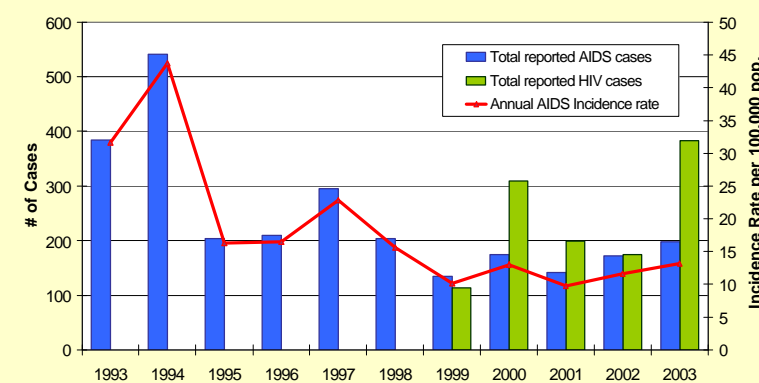
HIV & AIDS Cases by Modes of Transmission 2003



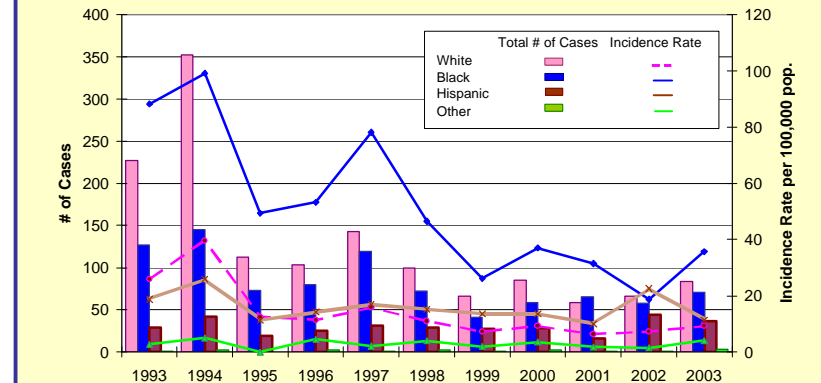
Major Manifested Diseases of AIDS Patients 1999-2003



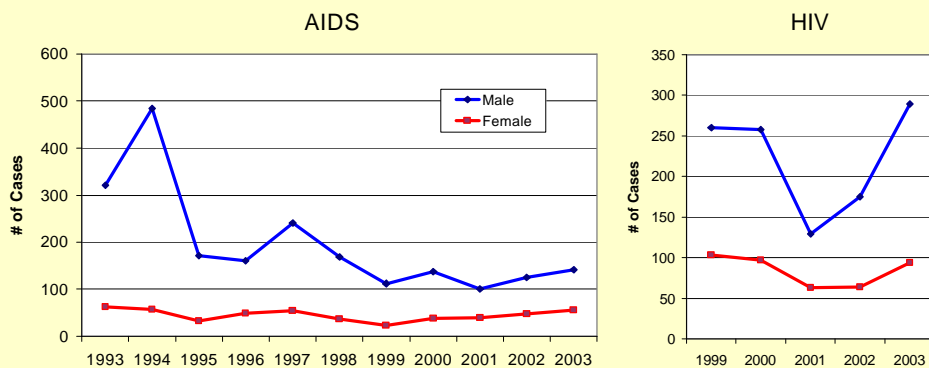
HIV & AIDS Cases in Tarrant County 1993-2003



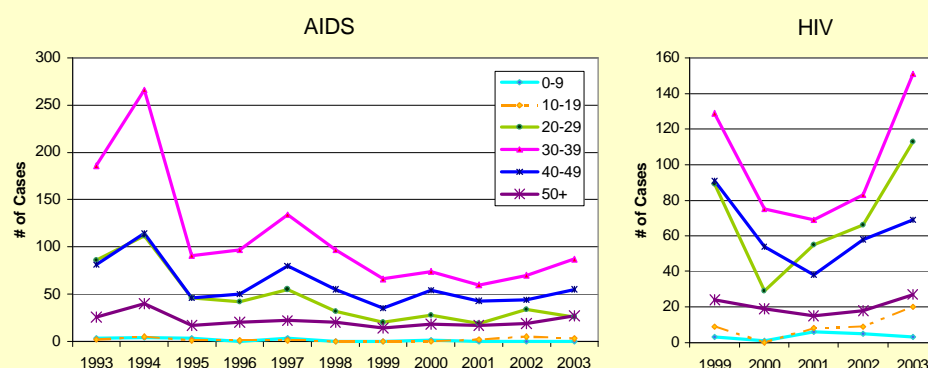
AIDS Cases by Race/Ethnicity 1993-2003



HIV & AIDS Cases by Gender 1993-2003



HIV & AIDS Cases by Age 1993-2003



HIV & AIDS Cases by Mode of Transmission 1993-2003

