

# INFANT MORTALITY IN TARRANT COUNTY

## Total Number of Pregnancies by Race/Ethnicity (1997-2001)

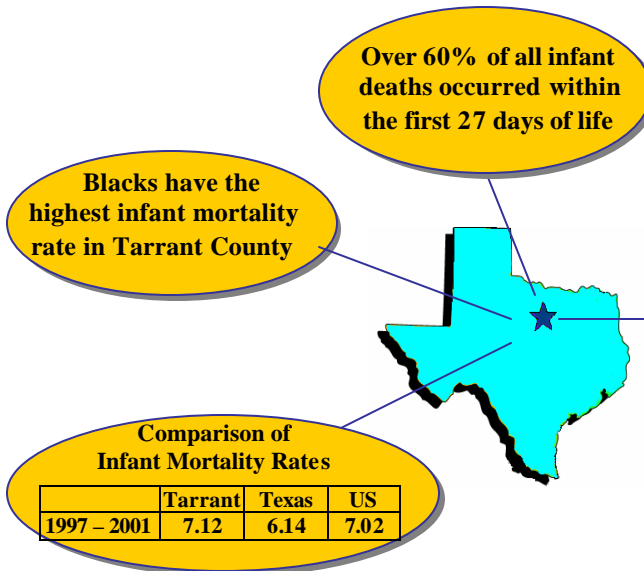
Year	Race		
	White	Black	Hispanic
1997	12,331 (54.5%)	3,169 (14.0%)	6,023 (26.6%)
1998	12,378 (53.0%)	3,333 (14.3%)	6,569 (28.1%)
1999	12,584 (51.5%)	3,478 (14.2%)	7,222 (29.6%)
2000	12,504 (49.2%)	3,626 (14.3%)	7,973 (31.4%)
2001	12,458 (47.2%)	3,738 (14.2%)	8,835 (33.5%)
1997-2001	62,255 (51.0%)	17,344 (14.2%)	36,622 (30.0%)

## Total Number and Rate of Infant Deaths by Race/Ethnicity (1997-2001)

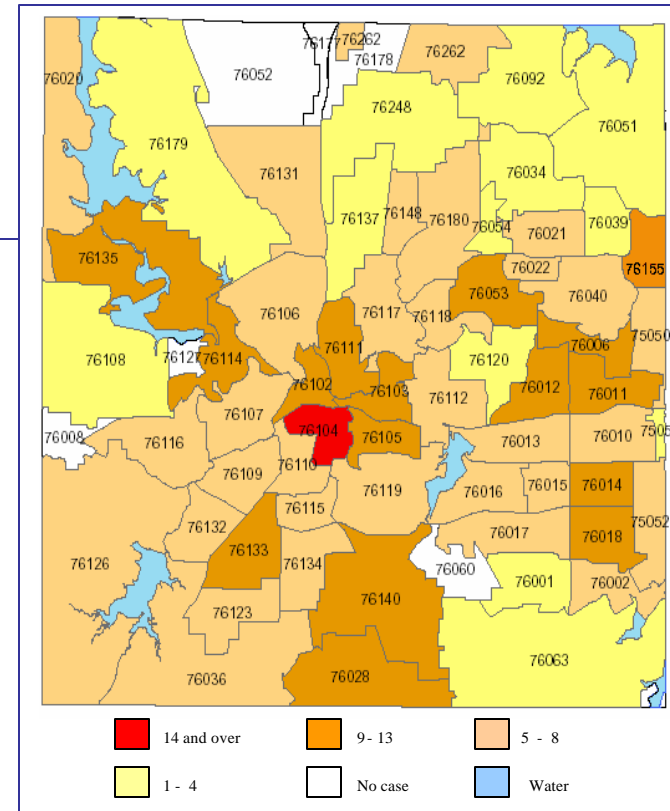
Year	Race					
	White		Black		Hispanic	
	Number	Rate	Number	Rate	Number	Rate
1997	81	6.6	37	11.7	43	7.1
1998	69	5.6	43	12.9	47	7.2
1999	71	5.6	59	17.0	58	8.0
2000	60	4.8	51	14.1	44	5.5
2001	81	6.5	47	12.5	63	7.1
1997-2001	362	5.82	237	13.64	255	6.98

## Neonatal and Post Neonatal Deaths by Race/Ethnicity (1997-2001)

	White		Black		Hispanic	
	Number	Rate	Number	Rate	Number	Rate
Neonatal Deaths (< 28 days)	252 (69.6%)	4.04	147 (62.0%)	8.47	182 (71.4%)	4.96
Postneonatal Deaths (1- 11 months)	110 (30.4%)	1.76	90 (38.0%)	5.18	73 (28.6%)	1.99



## INFANT MORTALITY RATE BY ZIP CODE TARRANT COUNTY, 1997-2001



- Infant Mortality Rate**  
= (# of infant deaths/ # of live births) x 1,000
- Due to limited number of cases (23 total), other race/ethnic groups are excluded from this report.
- Data Source:** Texas Department of Health Vital Statistics  
Data compiled by Tarrant County Public Health Department

## Top Four Leading Causes of Infant Deaths (1999-2001)

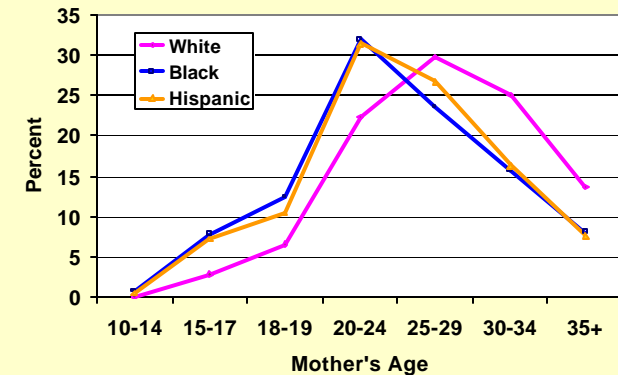
### Neonatal Deaths

Cause of Death	Total	Number of cases by Race/Ethnicity		
		White	Black	Hispanic
Congenital Malformations	89	48	11	30
Short Gestation/Low Birth Weight	73	25	26	22
Maternal complications of pregnancy, labor and delivery	62	20	19	23
Respiratory Distress of Newborn	24	9	8	7

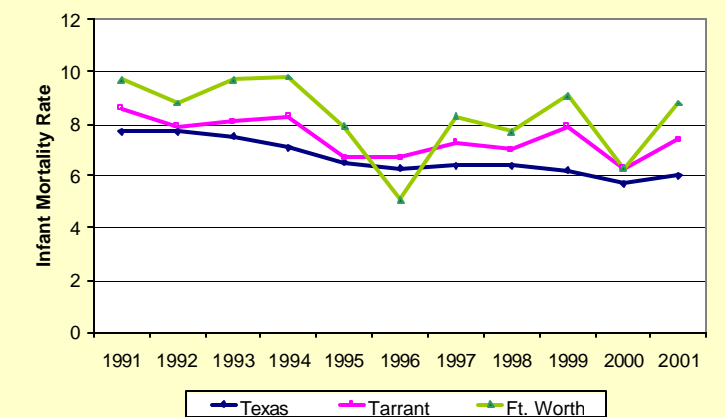
### Post-neonatal Deaths

Cause of Death	Total	Number of cases by Race/Ethnicity		
		White	Black	Hispanic
Sudden Infant Death Syndrome	58	19	28	11
Congenital Malformations	29	12	7	10
Intentional and Unintentional Injury	17	6	4	7
Diseases of Nervous System	11	7	4	0

## Live Birth by Age of Mother (1997-2001)

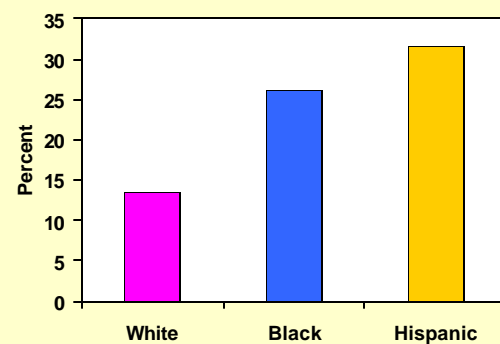


## State and Local Trends in Infant Mortality Rates (1991-2001)

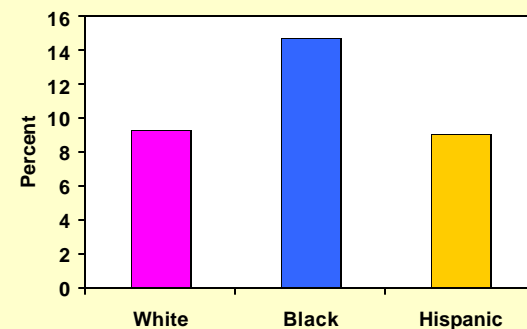


## Risk Factors for Infant Mortality by Race/Ethnicity (1997-2001)

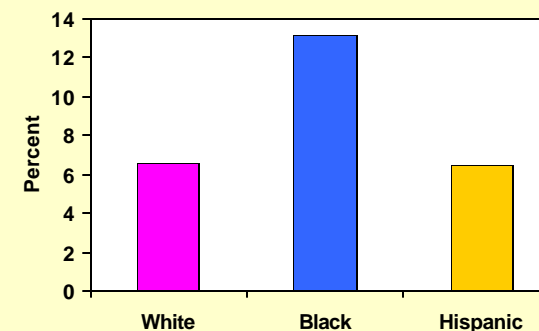
### No Prenatal Care during the First Trimester



### Pregnancies resulting in Premature Births<sup>1</sup>



### Infants with Low Birth Weight<sup>2</sup>



1. Premature birth: < 37 Weeks Gestation

2. Low birth weight: < 2500 gram



Tarrant County Public Health Department

Director: Lou K. Brewer, RN, MPH

For more information:  
Epidemiology and Health Information

Phone 817.871.7500 or 7279

Fax 817.212.2513

<http://health.tarrantcounty.com>

