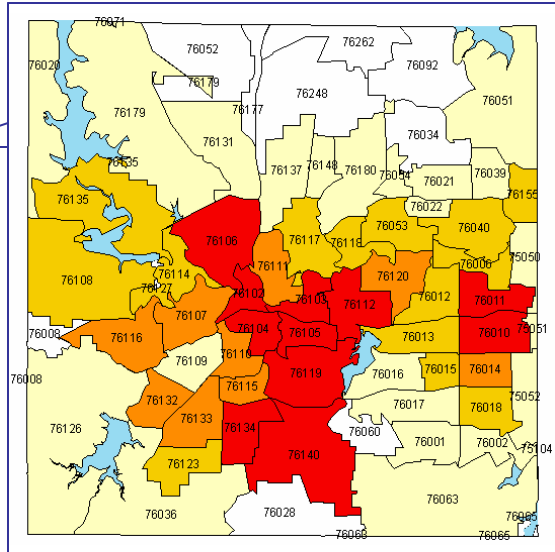


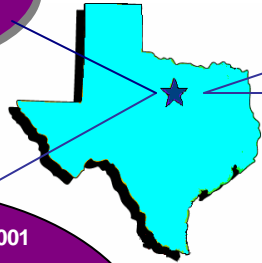
Sexually Transmitted Diseases in Tarrant County, 2001

DISTRIBUTION OF MAJOR STDs* BY ZIP CODE

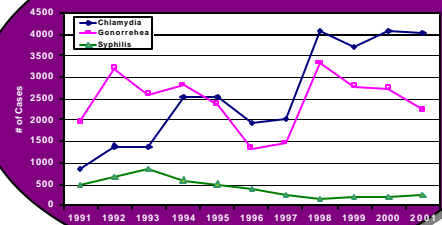
TARRANT COUNTY, 2001



Chlamydia and Gonorrhea remain the leading infectious diseases reported in Tarrant County in 2001



Trends of STDs Tarrant County, 1991-2001



* Major STDs include Chlamydia, Gonorrhea, and Early Syphilis.
 ** IR : Incidence Rate = (# of new cases, 2001/ total population, 2001) x 100,000

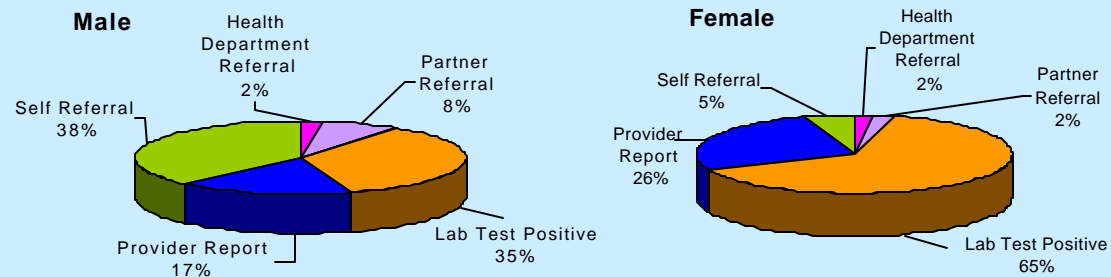
IR** > 501
 301 < IR ≤ 500
 151 < IR ≤ 300
 51 < IR ≤ 150
 IR ≤ 50

Total Number of Reported STDs¹, 2001

DISEASE	Male (IR per 100,000)*	Female (IR per 100,000)*	Gender Not-reported	Total (IR per 100,000)*
Chlamydia	845 (118.02)	3189 (436.72)	5	4039 (279.28)
Gonorrhea	1106 (154.47)	1137 (155.71)	3	2246 (155.30)
Early Syphilis	49 (6.84)	48 (6.57)	0	97 (6.71)
Non-Gonococcal Urethritis	200 (27.93)	0 (0.00)	0	200 (13.83)
Mucopurulent Cervicitis	0 (0.00)	316 (43.27)	1	317 (21.92)
Bacterial Vaginosis (BV)	0 (0.00)	272 (37.25)	0	272 (18.81)
Trichomoniasis	4 (0.56)	63 (8.63)	0	67 (4.63)
[§] Pelvic Inflammatory Disease	0 (0.00)	8 (1.10)	0	8 (0.55)
Genital Warts (HPV)	123 (17.18)	27 (3.70)	0	150 (10.37)
Herpes (HSV)	35 (4.89)	32 (4.38)	0	67 (4.63)

§ These conditions are complications from STDs.
 1. HIV/AIDS and Hepatitis B will be reported in a separate poster.

Detection Methods of Reported STDs, 2001



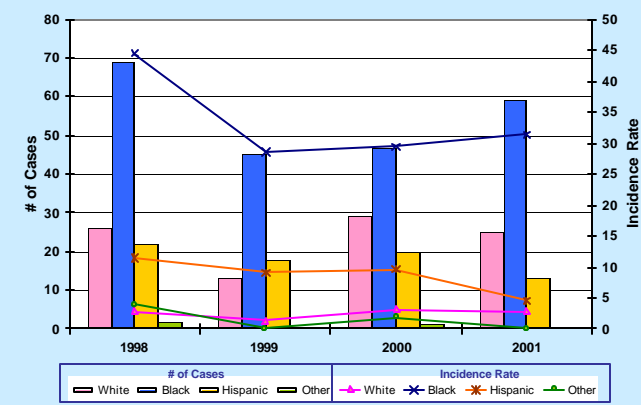
SYPHILIS

Total Number of Reported Early Syphilis² Cases, 2001

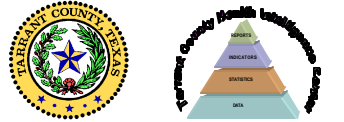
Sex	Race/Ethnicity	Age	
Male	White	0-9	0 (0%)
		10-19	6 (6%)
		20-29	25 (26%)
		30-39	42 (43%)
		40-50	15 (16%)
Female	Black	0-9	9 (9%)
		10-19	6 (6%)
		20-29	25 (26%)
		30-39	42 (43%)
		40-50	15 (16%)
Total		97 (100%)	

2. Early Syphilis includes Primary, Secondary and Early Latent cases.

Reported Early Syphilis Cases by Race/Ethnicity, 1998-2001



For more information:
 Tarrant County
 Public Health Department
 Director: Lou K. Brewer, RN, MPH
 Epidemiology and Health Information



Phone
 English: 817.871.7279
 Spanish: 817.871.7500
 Fax
 817.212.2513
<http://health.tarrantcounty.com>

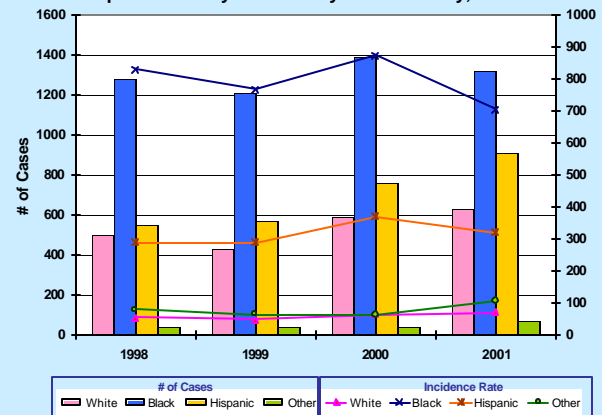
CHLAMYDIA

Total Number of Reported Chlamydia Cases, 2001

Sex	Race/Ethnicity	Age	
Male	White	0-9	4 (0%)
		10-19	1624 (40%)
		20-29	2002 (50%)
		30-39	305 (7%)
		40-49	51 (2%)
Female	Black	0-9	8 (0%)
		10-19	10 (0%)
		20-29	35 (1%)
		30-39	8 (0%)
		40-49	10 (0%)
Unknown	Hispanic	0-9	35 (1%)
		10-19	35 (1%)
		20-29	35 (1%)
		30-39	35 (1%)
		40-49	35 (1%)
Total		4039 (100%)	

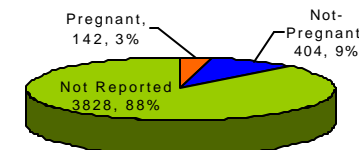
Total 4039 (100%)

Reported Chlamydia Cases by Race/Ethnicity, 1998-2001



Pregnancy and STDs

The consequences of an STD can be significantly more serious for a pregnant woman and her baby.



Pregnancy Status of Female Patients in Tarrant County

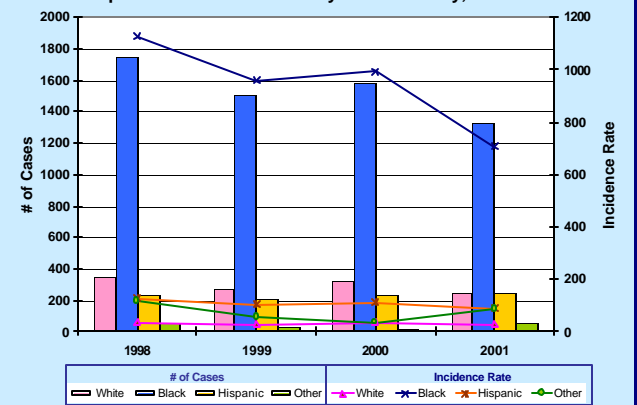
GONORRHEA

Total Number of Reported Gonorrhea Cases, 2001

Sex	Race/Ethnicity	Age	
Male	White	0-9	8 (0%)
		10-19	756 (34%)
		20-29	1020 (45%)
		30-39	320 (14%)
		40-49	103 (5%)
Female	Black	0-9	29 (1%)
		10-19	6 (0%)
		20-29	6 (0%)
		30-39	6 (0%)
		40-49	6 (0%)
Unknown	Hispanic	0-9	4 (0%)
		10-19	4 (0%)
		20-29	4 (0%)
		30-39	4 (0%)
		40-49	4 (0%)
Total		2246 (100%)	

Total 2246 (100%)

Reported Gonorrhea Cases by Race/Ethnicity, 1998-2001



CHLAMYDIA & GONORRHEA CO-INFECTION

Likelihood of STD Co-infection increases with a Primary STD infection

- 1/3 of patients diagnosed with Gonorrhea also have Chlamydia.
- Close to half of female Gonorrhea patients are co-infected with Chlamydia

	Chlamydia Only	Gonorrhea Only	Chlamydia & Gonorrhea Coinfection	Total
Male	622 (36%)	883 (51%)	223 (13%)	1728 (100%)
Female	2678 (70%)	626 (16%)	511 (13%)	3815 (100%)
Total	3300 (60%)	1509 (27%)	734 (13%)	5543 (100%)

