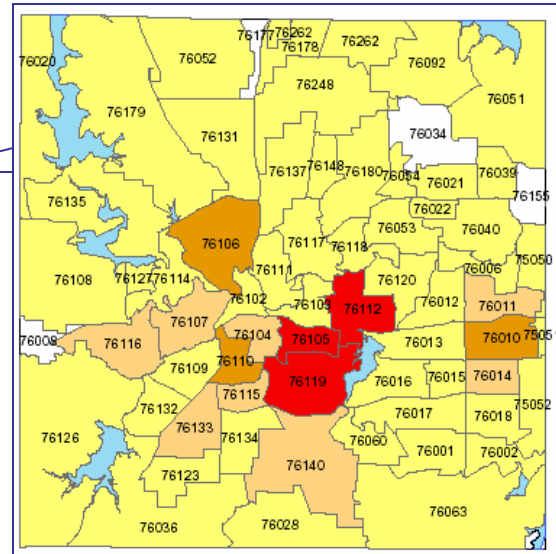


Sexually Transmitted Diseases in Tarrant County, 2002

NUMBER OF REPORTED STDs* BY ZIP CODE

TARRANT COUNTY, 2002



■ Highest Quartile (> 114)
■ 2nd Quartile (76 - 113)
■ 3rd Quartile (39 - 75)
■ Lowest Quartile (< 38)
■ No Case or No Data

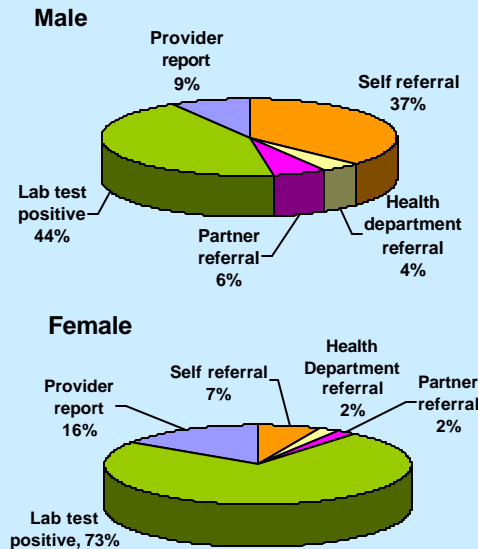
Total Number of Reported STDs, 2002

DISEASE	Male (IR per 100,000)*	Female (IR per 100,000)*	Total ¹ (IR per 100,000)*
Chlamydia	803 (112.15)	3137 (429.60)	3950 (273.13)
Gonorrhea	942 (131.56)	1022 (139.96)	1966 (135.94)
Early Syphilis	120 (16.76)	102 (13.97)	222 (15.35)
Non-Gonococcal Urethritis	14 (1.96)	0 (0.00)	14 (0.97)
Herpes Simplex Virus	10 (1.40)	14 (1.92)	24 (1.66)
Trichomoniasis	0 (0.00)	< 5	< 5
Human Papilloma Virus	< 5	0	< 5
Mucopurulent Cervicitis	-	7 (0.96)	7 (0.96)
Bacterial Vaginosis (BV)	-	< 5	< 5
[§] Pelvic Inflammatory Disease	-	< 5	< 5

[§] These conditions are complications from STDs.
¹ The sum of male and female does not equal the total because of unspecified gender.

* STDs in this poster include all STDs except HIV/AIDS and Hepatitis B
 * IR: Incidence Rate per 100,000 population

STDs Reporting Sources, 2002



Tarrant County Public Health
Director: Lou K. Brewer
RN, MPH



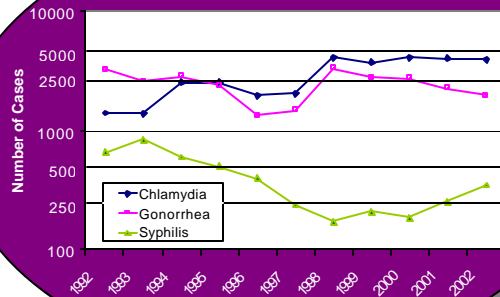
For more information:
Epidemiology & Health Information

Phone
817.321.5350
Fax
817.321.5353
<http://health.tarrantcounty.com>

Chlamydia and Gonorrhea remain the leading infectious diseases reported in Tarrant County in 2002



STD Trends in Tarrant County



* Logarithmic scale used for Y axis

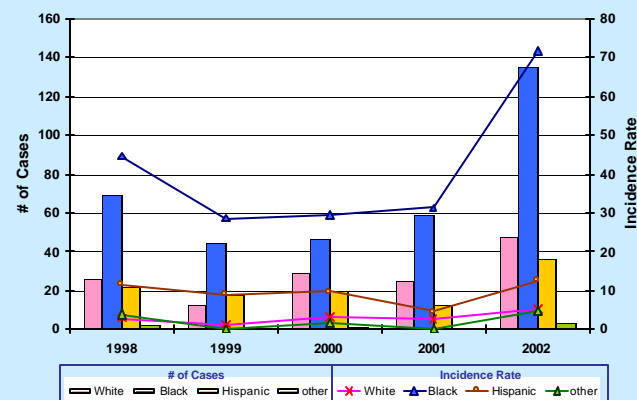
SYPHILIS

Total Number of Reported Early Syphilis² Cases, 2002

Gender	Race/Ethnicity	Age
Male	White	0-9
	Black	10-19
Female	Hispanic	20-29
	Other	30-39
Total		40-49
		50-59
		60+

2. Early Syphilis includes Primary, Secondary and Early Latent cases.

Reported Early Syphilis Cases by Race/Ethnicity, 1998-2002



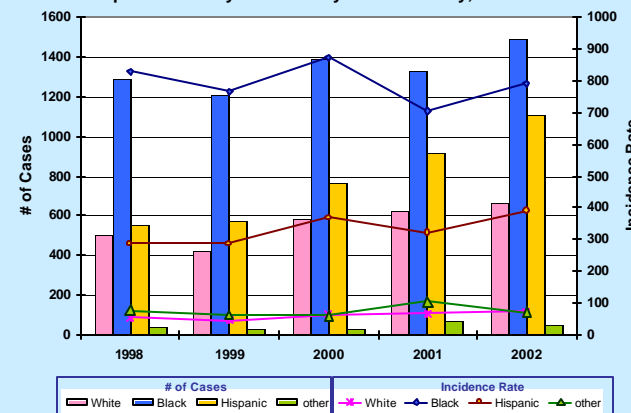
CHLAMYDIA

Total Number of Reported Chlamydia Cases, 2002

Gender	Race/Ethnicity	Age
Male	White	0-9
	Black	10-19
Female	Hispanic	20-29
	Other	30-39
Total		40-49
		50-59
		60+

3. Included in the total were 10 cases of unspecified gender; 638 cases of unspecified Race/Ethnicity; 55 cases of unspecified age group.

Reported Chlamydia Cases by Race/Ethnicity, 1998-2002



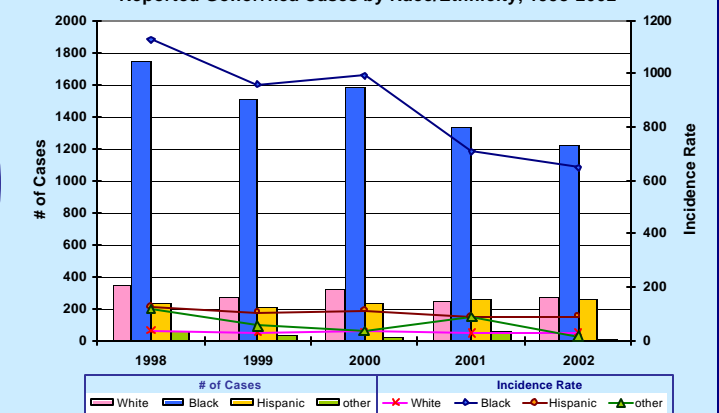
GONORRHEA

Total Number of Reported Gonorrhea Cases, 2002

Gender	Race/Ethnicity	Age
Male	White	0-9
	Black	10-19
Female	Hispanic	20-29
	Other	30-39
Total		40-49
		50-59
		60+

4. Included in the total were two cases of unspecified gender; 208 cases of unspecified Race/Ethnicity; 11 cases of unspecified age group.

Reported Gonorrhea Cases by Race/Ethnicity, 1998-2002



Pregnancy and STDs

The consequences of an STD can be significantly more serious for a pregnant woman and her baby.

In 2002, there were 141 pregnant women diagnosed with STDs in Tarrant County. All of these women received appropriate follow-up and referral.