



Tarrant County Public Health
 Division of Epidemiology and Health Information

Infant Mortality Summary, Tarrant County, 2011

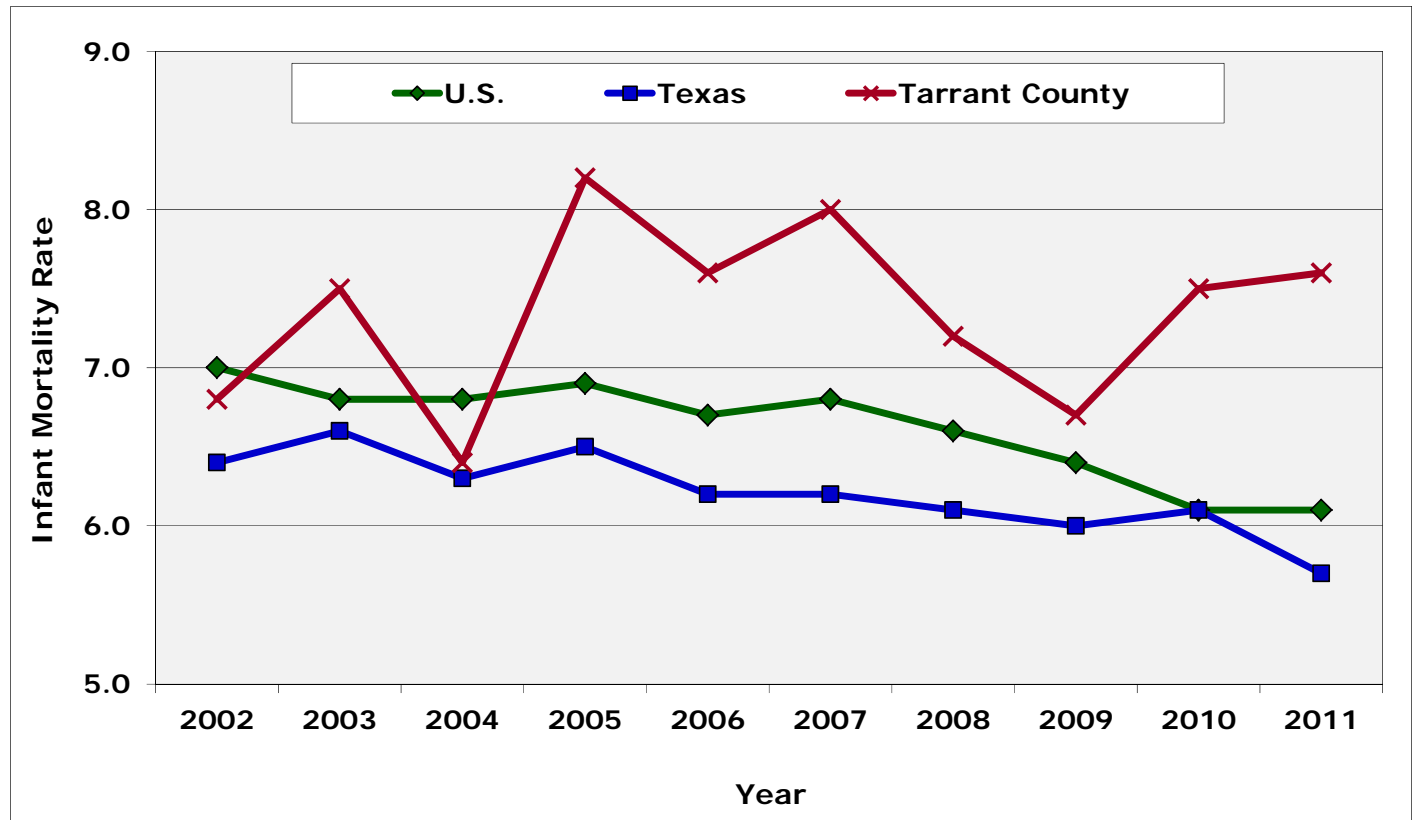
Table 1. Infant mortality rates (IMR) for Tarrant County, Texas, and the United States, 2011

Location	IMR
Tarrant County	7.6
Texas	5.7
United States	6.1

Rate=number of infant deaths per 1,000 live births
 Data source: Texas Department of State Health Services
 and the National Center for Health Statistics
 Data provided by: Division of Epidemiology and Health
 Information, Tarrant County Public Health

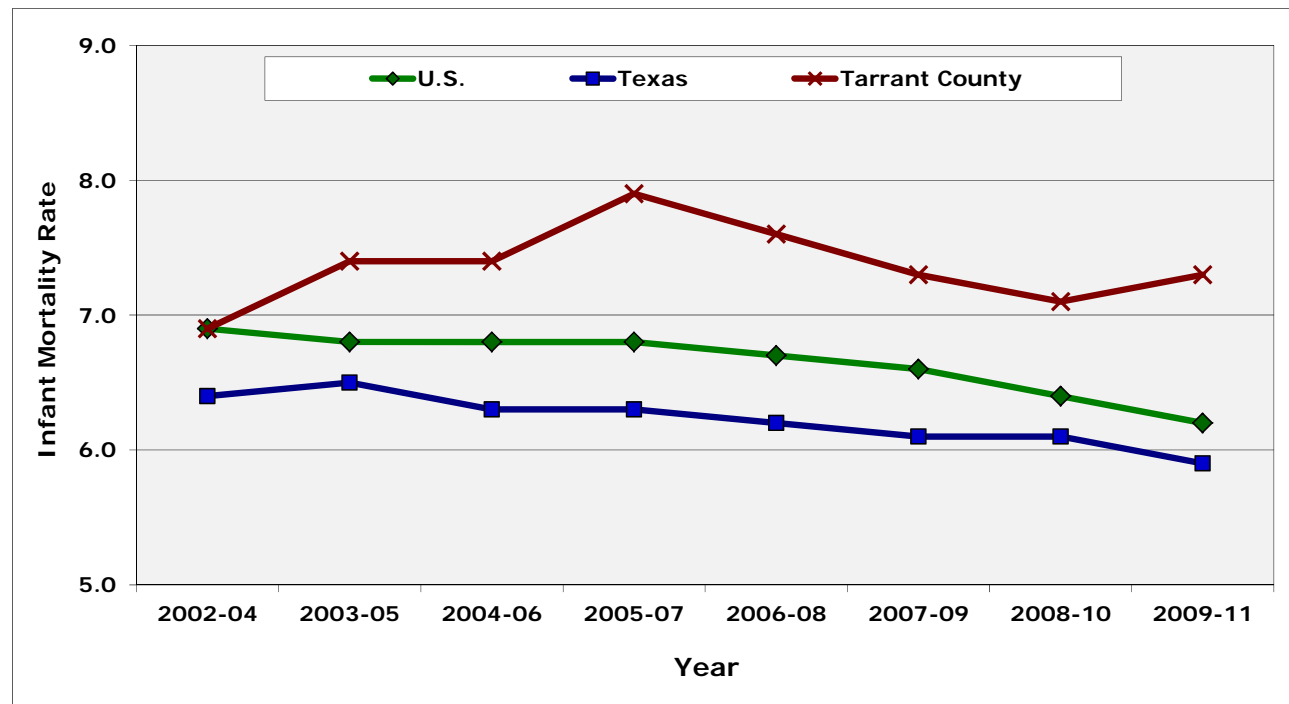
*In 2011, Tarrant County had the **highest infant mortality rate** among Texas counties with 10,000 or more live births*

Figure 1. Infant mortality rates for Tarrant County, Texas, and the United States, 2002-2011



Rate = number of infant deaths per 1,000 live births
 Data source: Texas Department of State Health Services and National Center for Health Statistics
 Data provided by: Division of Epidemiology and Health Information, Tarrant County Public Health

Figure 2. Three-year rolling infant mortality rates for Tarrant County, Texas, and the United States, 2002-2011

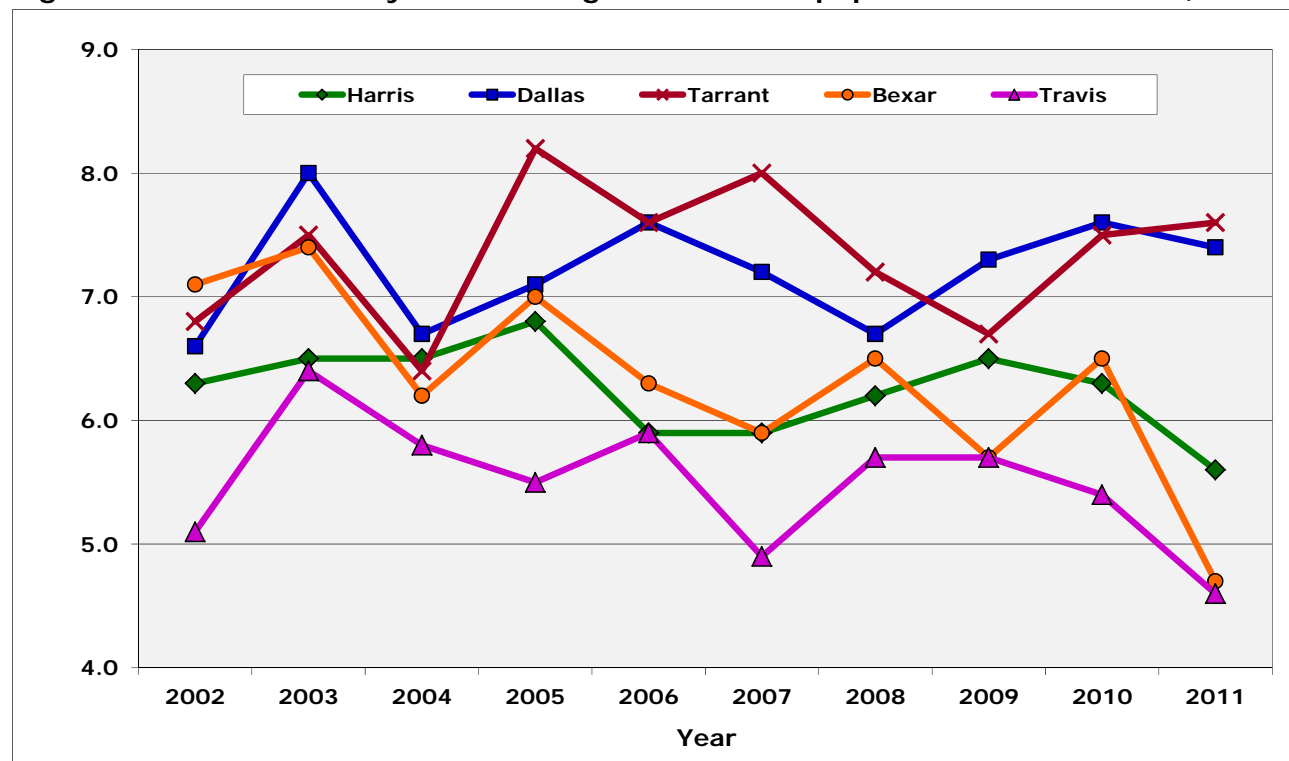


Rate = number of infant deaths per 1,000 live births

Data source: Texas Department of State Health Services and National Center for Health Statistics

Data provided by: Division of Epidemiology and Health Information, Tarrant County Public Health

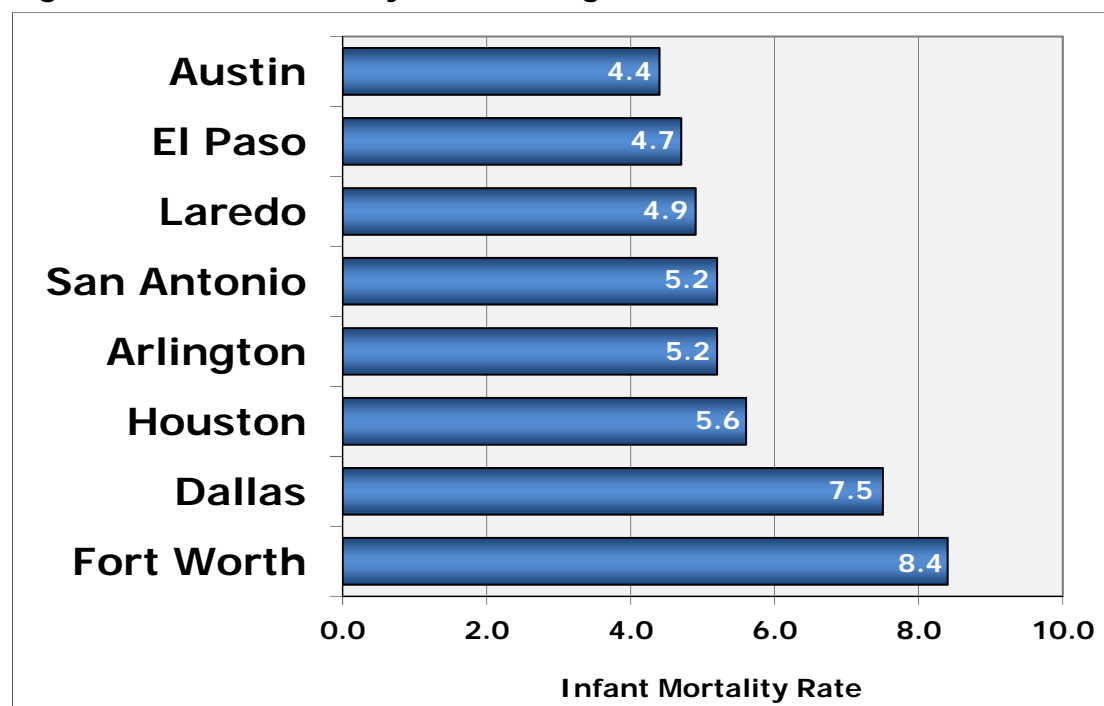
Figure 3. Infant mortality rates among the five most populous Texas counties, 2002-2011



Rate = number of infant deaths per 1,000 live births

Data source: Texas Department of State Health Services

Data provided by: Division of Epidemiology and Health Information, Tarrant County Public Health

Figure 4. Infant mortality rates among Texas cities with $\geq 5,000$ live births, 2011

Rate = number of infant deaths per 1,000 live births

Data source: Texas Department of State Health Services

Data provided by: Division of Epidemiology and Health Information, Tarrant County Public Health

Table 2. Infant mortality rates (IMR) by race/ethnicity, Tarrant County, 2011

Race/Ethnicity	IMR
Hispanic	7.9
Non-Hispanic Black	14.3
Non-Hispanic White	5.4
All Races/Ethnicities	7.6

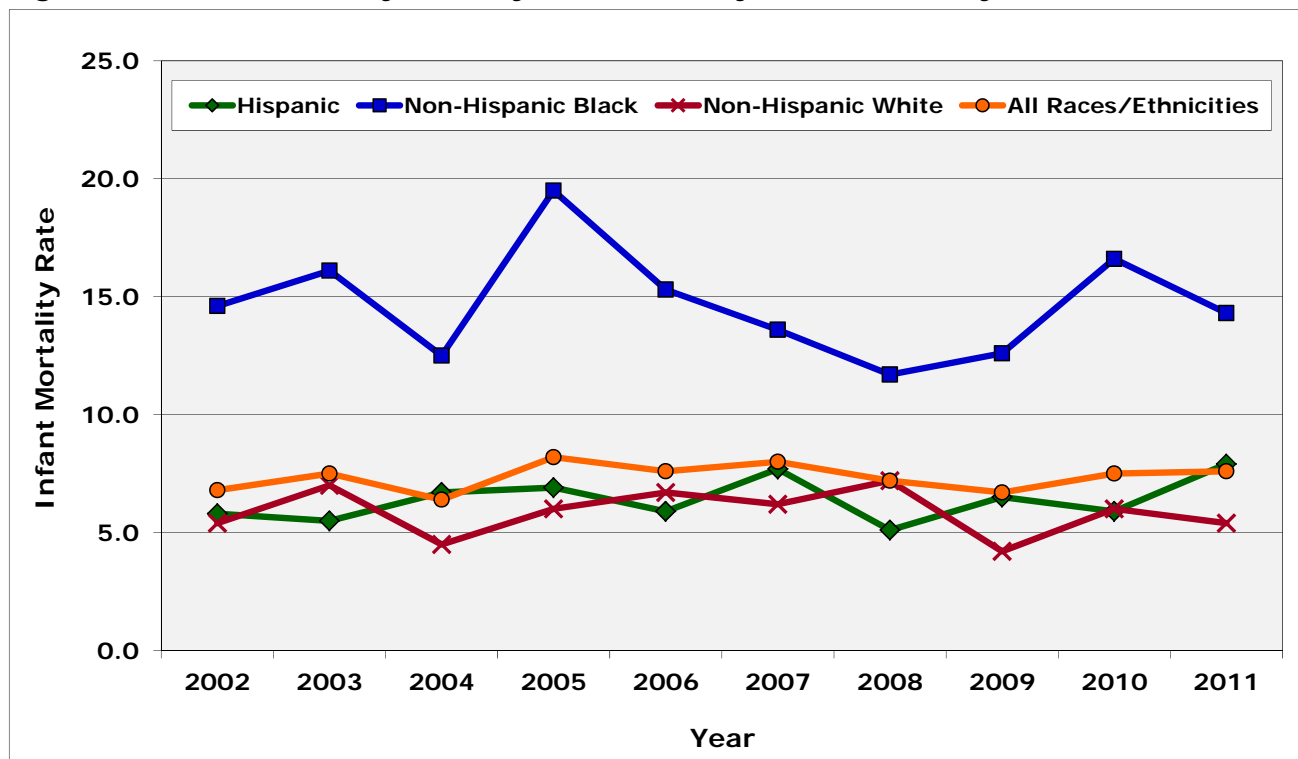
Rate=number of infant deaths per 1,000 live births

Data source: Texas Department of State Health Services

Data provided by: Division of Epidemiology and Health Information, Tarrant County Public Health

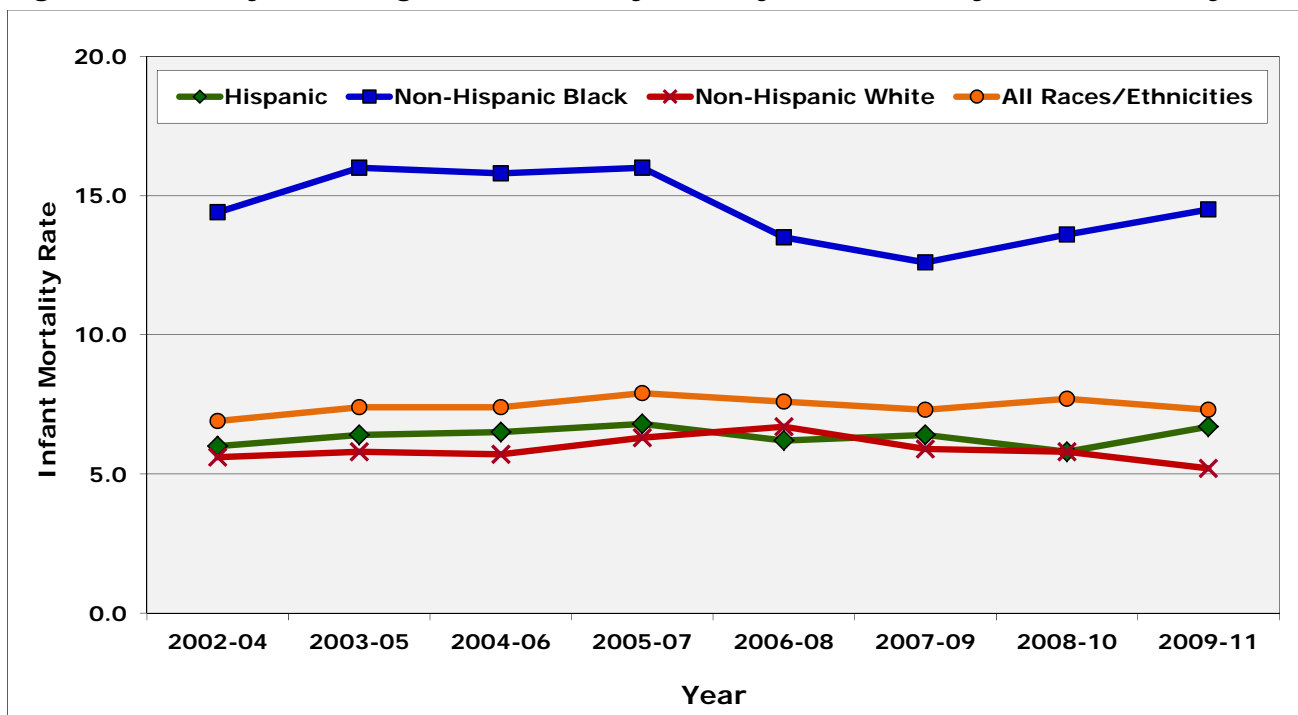
*In 2011, the infant mortality rate among non-Hispanic Blacks was **more than twice as high** as non-Hispanic Whites.*

Figure 5. Infant mortality rates by race/ethnicity, Tarrant County, 2002-2011



Rate=number of infant deaths per 1,000 live births
 Data source: Texas Department of State Health Services
 Data provided by: Tarrant County Public Health

Figure 6. Three-year rolling infant mortality rates by race/ethnicity, Tarrant County, 2002-2011



Rate=number of infant deaths per 1,000 live births
 Data source: Texas Department of State Health Services
 Data provided by: Tarrant County Public Health